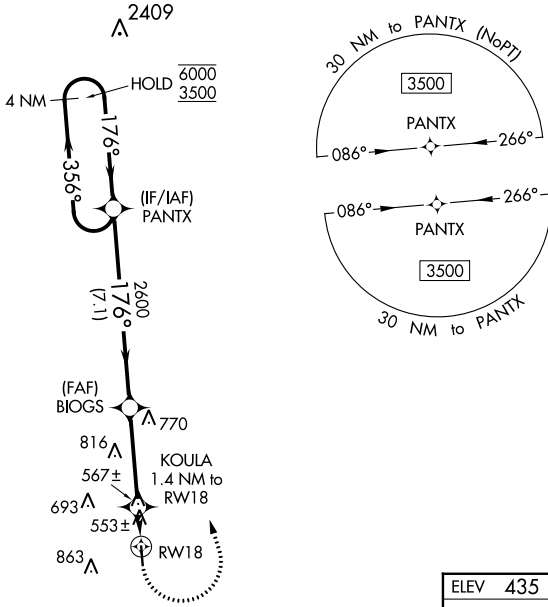


APP CRS	Rwy Idg	<b>4007</b>
<b>176°</b>	TDZE	<b>435</b>
	Apt Elev	<b>435</b>

# RNAV (GPS) RWY 18

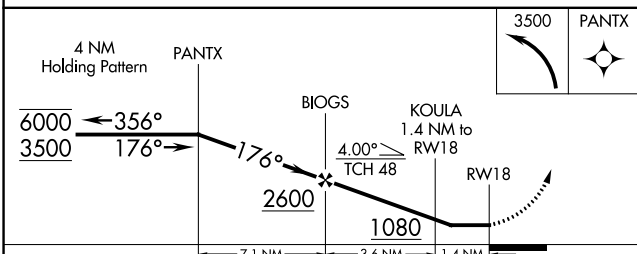
COPIAH COUNTY (M11)

RNP APCH.		MISSED APPROACH: Climbing left turn to 3500 direct PANTX and hold, continue climb-in-hold to 3500.
<p><b>▽</b> Rwy 18 helicopter visibility reduction below 1 SM NA. Use Brookhaven altimeter setting, when not received, use Hawkins Fld altimeter setting and increase all MDA 40 feet. Straight-in Rwy 18 NA at night, Circling Rwy 18 NA at night.</p> <p><b>▲ NA</b></p>		
1R7 AWOS-3P <b>118.125</b>	MEMPHIS CENTER <b>132.5 259.1</b>	CTAF <b>122.9</b>



SC-4, 22 FEB 2024 to 21 MAR 2024

SC-4, 22 FEB 2024 to 21 MAR 2024



ELEV 435	TDZE 435
----------	----------

Diagram of RWY 18 showing 4007 X 75 and 36 with 1.0% UP slope. The diagram also shows the 176° heading to RWY 18 and the 81 ft height of the RWY 18 threshold.

CATEGORY	A	B	C	D
LNAV MDA	860-1	425 (500-1)	NA	
<b>C</b> CIRCLING	940-1 505 (600-1)	1140-1 705 (800-1)	NA	

MIRL Rwy 18-36  
REIL Rwy 18 and 36

WAAS CH <b>53542</b> <b>W36A</b>	APP CRS <b>356°</b>	Rwy Idg <b>4007</b> TDZE <b>430</b> Apt Elev <b>435</b>
--	------------------------	---

# RNAV (GPS) RWY 36

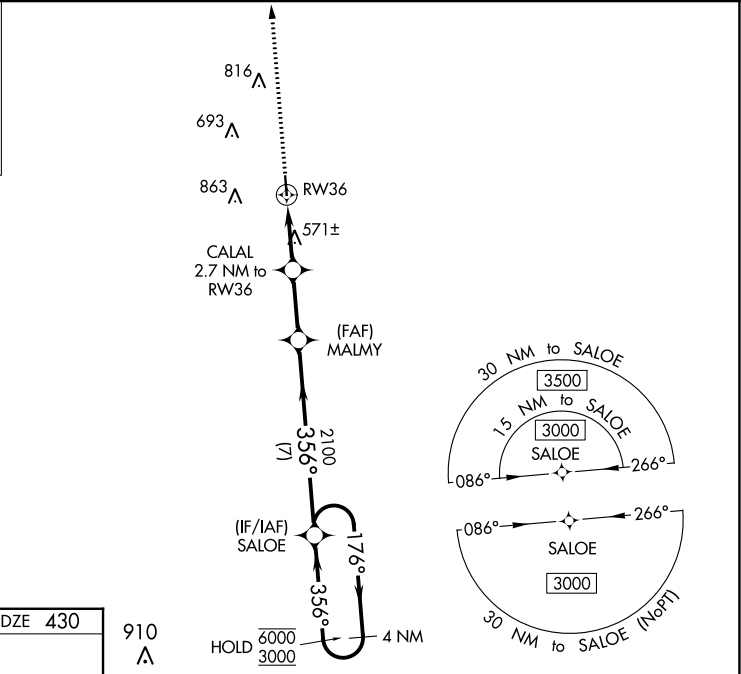
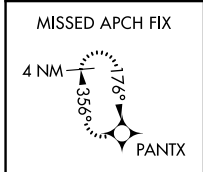
COPIAH COUNTY (M11)

RNP APCH - GPS.

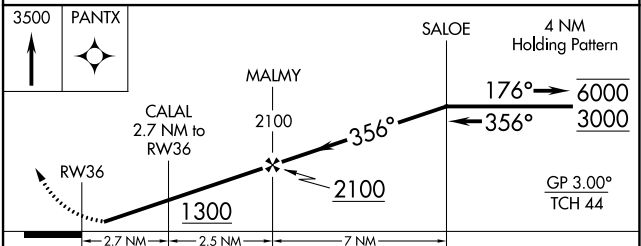
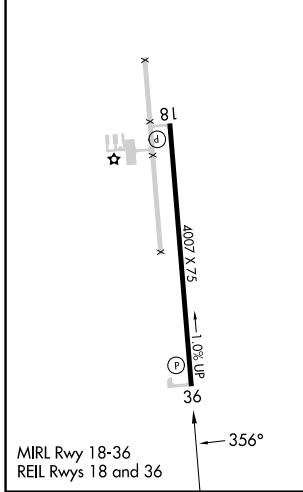
**NA** Circling Rwy 18 NA at night. Rwy 36 helicopter visibility reduction below 3/4 SM NA. Baro-VNAV NA. Use Brookhaven altimeter setting; when not received, use Hawkins Fld altimeter setting and increase LPV DA to 756; increase LNAV/VNAV DA to 906; increase all MDAs 40 feet and Circling visibility Cats C and D 1/4 SM.

**MISSED APPROACH:** Climb to 3500 direct PANTX and hold, continue climb-in-hold to 3500.

1R7 AWOS-3P <b>118.125</b>	MEMPHIS CENTER <b>132.5 259.1</b>	CTAF <b>122.9</b>
-------------------------------	--------------------------------------	----------------------



ELEV 435	TDZE 430
----------	----------



CATEGORY	A	B	C	D
LPV DA	730-1 300 (300-1)			
LNAV/VNAV DA	880-1 3/8 450 (500-1 3/8)			
LNAV MDA	880-1	450 (500-1)	880-1 3/8	450 (500-1 3/8)
<b>CIRCLING</b>	940-1 505 (600-1)	1140-1 705 (800-1)	1280-2 1/2 845 (900-2 1/2)	1280-2 3/4 845 (900-2 3/4)

SC-4, 22 FEB 2024 to 21 MAR 2024

SC-4, 22 FEB 2024 to 21 MAR 2024