

WAAS CH <b>82239</b> <b>W01A</b>	APP CRS <b>015°</b>	Rwy Idg <b>4400</b> TDZE <b>126</b> Apt Elev <b>126</b>
--	------------------------	---

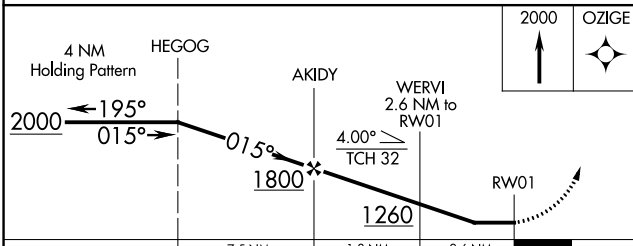
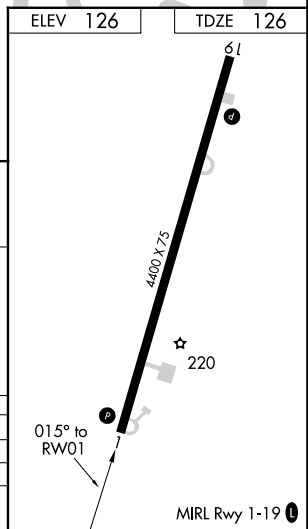
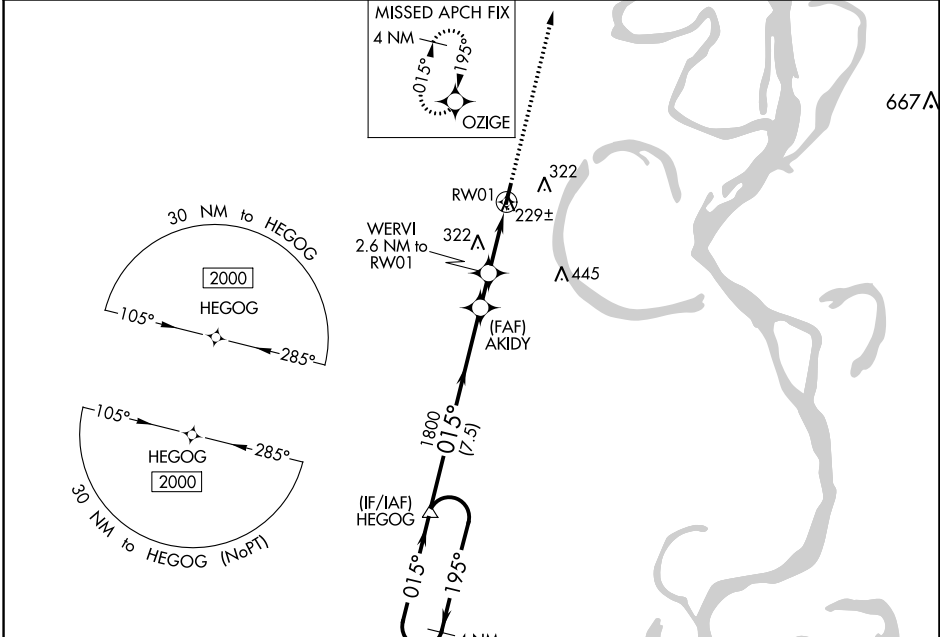
# RNAV (GPS) RWY 1

LAKE VILLAGE MUNI (M32)

**▼** Circling NA east of Rwy 1-19. Helicopter visibility reduction below 1 SM NA. DME/DME RNP-0.3 NA.  
**▲** NA Procedure NA at night. Use Greenville altimeter setting.

MISSED APPROACH: Climb to 2000 direct OZIGE and hold.

GLH ASOS <b>125.525</b>	MEMPHIS CENTER <b>135.875 269.35</b>	CTAF <b>122.90</b>
----------------------------	---	-----------------------



CATEGORY	A	B	C	D
LP MDA	540-1	414 (500-1)	NA	
LNAV MDA	620-1	494 (500-1)	NA	
<b>◻</b> CIRCLING	620-1 494 (500-1)	720-1 594 (600-1)	720-1½ 594 (600-1½)	720-2 594 (600-2)

SC-1, 22 FEB 2024 to 21 MAR 2024

SC-1, 22 FEB 2024 to 21 MAR 2024

APP CRS	Rwy Idg	<b>4400</b>
	TDZE	<b>125</b>
<b>195°</b>	Apt Elev	<b>126</b>

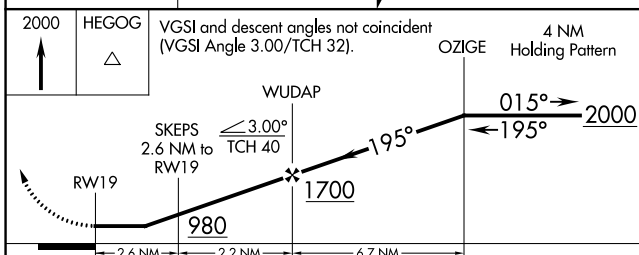
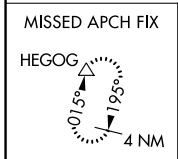
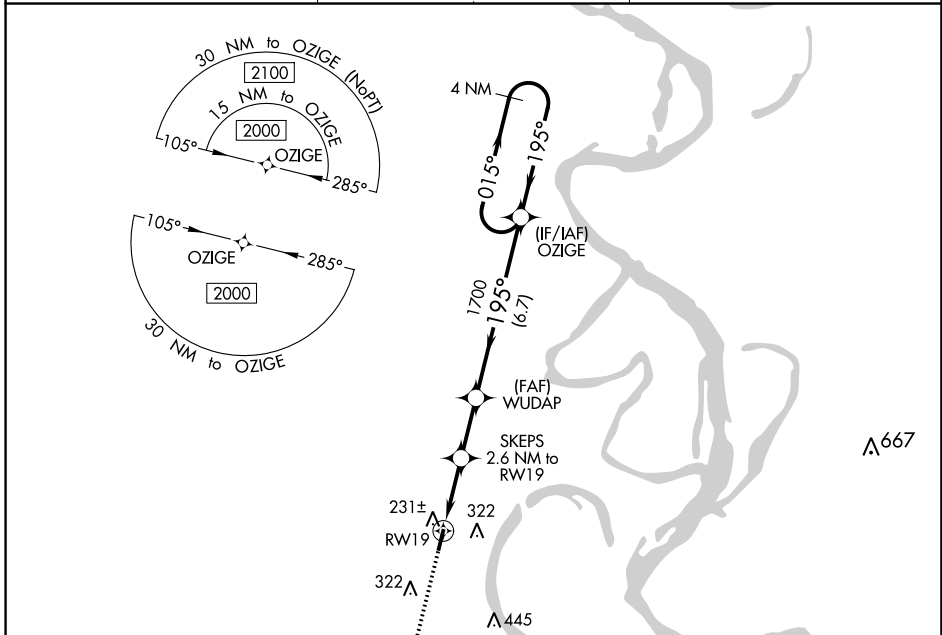
# RNAV (GPS) RWY 19

LAKE VILLAGE MUNI (M32)

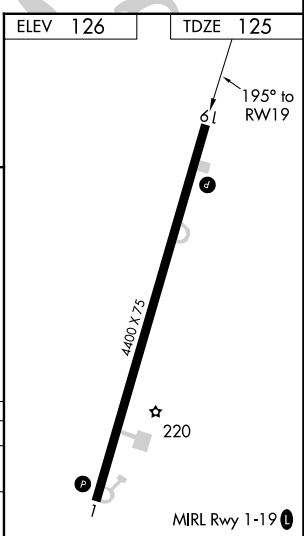
**⚠** Circling NA east of Rwy 1-19. DME/DME RNP-0.3 NA.  
**⚠** Procedure NA at night. Helicopter visibility reduction below 1 SM NA.  
 Use Greenville altimeter setting.

MISSED APPROACH: Climb to 2000 direct HEGOG and hold.

GLH ASOS <b>125.525</b>	MEMPHIS CENTER <b>135.875 269.35</b>	CTAF <b>122.9</b>
----------------------------	---	----------------------



CATEGORY	A	B	C	D
LNVA MDA	540-1	415 (500-1)	540-1½	415 (500-1½)
<b>C</b> CIRCLING	620-1 494 (500-1)	720-1 594 (600-1)	720-1½ 594 (600-1½)	720-2 594 (600-2)



SC-1, 22 FEB 2024 to 21 MAR 2024

SC-1, 22 FEB 2024 to 21 MAR 2024