

WAAS CH 42623 W01A	APP CRS 006°	Rwy Idg TDZE 346 Apt Elev 357	5009
--	------------------------	---	-------------

RNAV (GPS) RWY 1

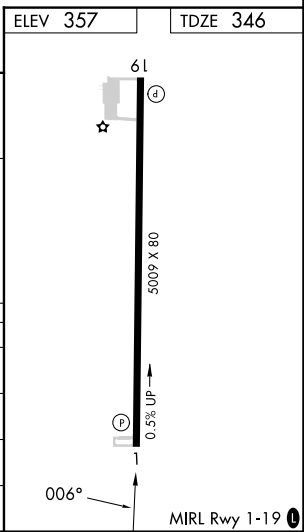
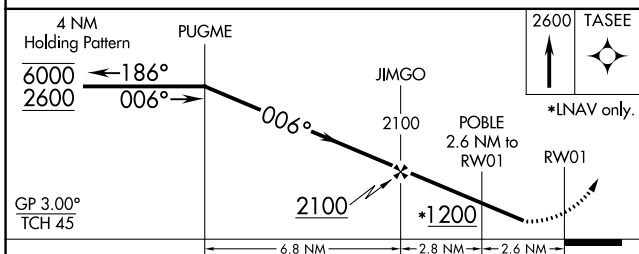
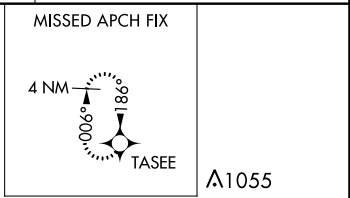
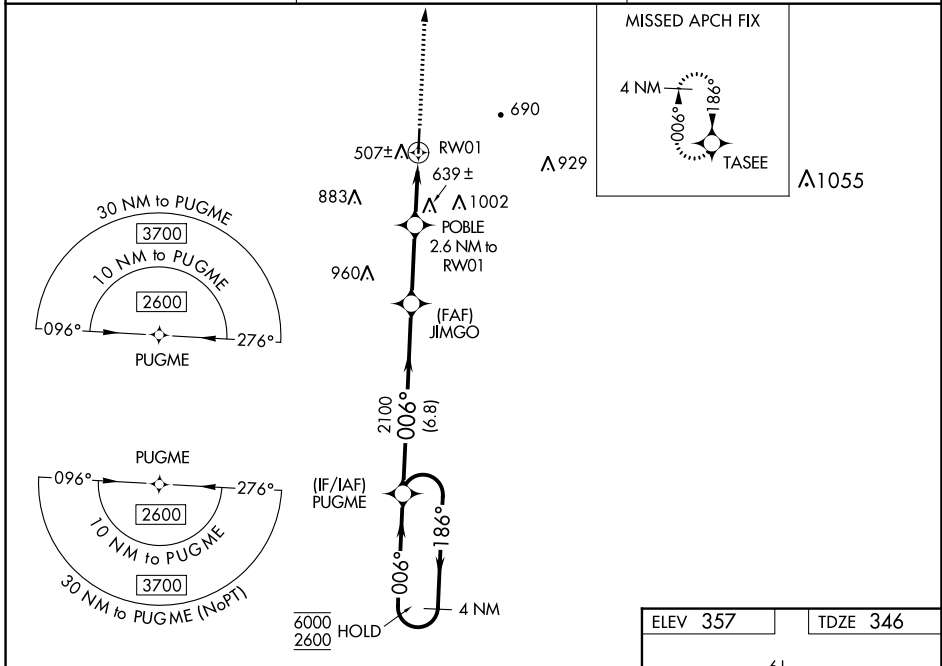
RICHARD ARTHUR FLD (M95)

RNP APCH.

NA Procedure NA at night. Rwy 1 helicopter visibility reduction below 1 SM NA. Baro-VNAV NA. Use Jasper altimeter setting; when not received, use Tuscaloosa altimeter setting and increase LPV DA to 680, LNAV/VNAV DA to 1008, and all MDA 20 feet; increase LNAV/VNAV all Cat visibility 1/4 SM.

MISSED APPROACH: Climb to 2600 direct TASEE and hold.

JFX AWOS-3PT 119.225	COLUMBUS APP CON * 126.075 239.25	UNICOM 122.8 (CTAF) 0
--------------------------------	---	---------------------------------



CATEGORY	A	B	C	D
LPV DA	679-1 1/8		333 (400-1 1/8)	
LNAV/VNAV DA	1007-2 1/4		661 (700-2 1/4)	
LNAV MDA	980-1	634 (700-1)	980-1 7/8	634 (700-1 7/8)
CIRCLING	1020-1 663 (700-1)	1060-1 703 (800-1)	1400-3	1043 (1100-3)

SE-4, 22 FEB 2024 to 21 MAR 2024

SE-4, 22 FEB 2024 to 21 MAR 2024

APP CRS	Rwy Idg	5009
186°	TDZE	357
	Apt Elev	357

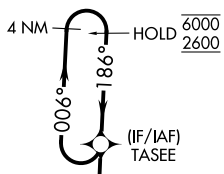
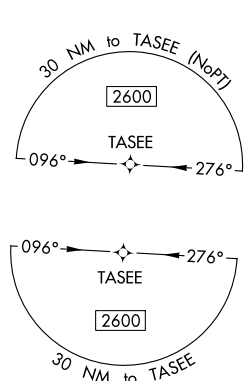
RNAV (GPS) RWY 19

RICHARD ARTHUR FLD (M95)

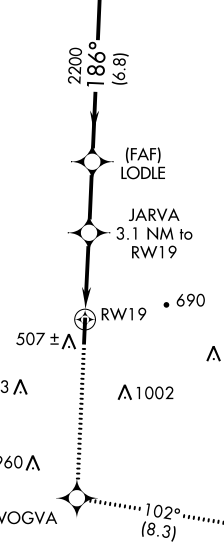
RNP APCH.
 Procedure NA at night.
 Rwy 19 helicopter visibility reduction below 1 SM NA.
 Use Jasper altimeter setting.

MISSED APPROACH: Climb to 2600 direct WOGVA and on track 102° to BESOM and hold.

JFX AWOS-3PT 119.225	COLUMBUS APP CON ★ 126.075 239.25	UNICOM 122.8 (CTAF)
--------------------------------	---	-------------------------------



Λ1167



SE-4, 22 FEB 2024 to 21 MAR 2024

SE-4, 22 FEB 2024 to 21 MAR 2024

ELEV 357	TDZE 357
----------	----------

MIRL Rwy 1-19

2600	WOGVA	tr 102°	BESOM	Visual Segment - Obstacles.	4 NM Holding Pattern
				TASEE	
	JARVA 3.1 NM to RWY 19	LODLE		006° → 6000	← 186° 2600
	RWY 19				
	3.1 NM	2.6 NM	6.8 NM		
CATEGORY	A	B	C	D	
LNAV MDA	1080-1	723 (800-1)	1080-2	723 (800-2)	