

WAAS CH <b>61332</b> <b>W36A</b>	APP CRS <b>004°</b>	Rwy Idg TDZE Apt Elev	<b>4753</b> <b>614</b> <b>614</b>
--	------------------------	-----------------------------	---

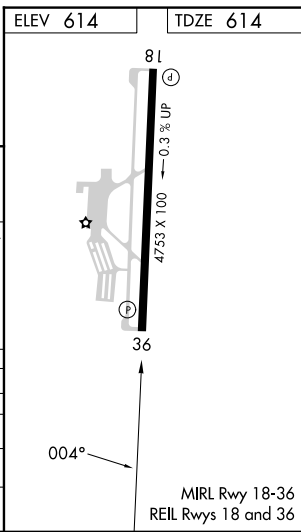
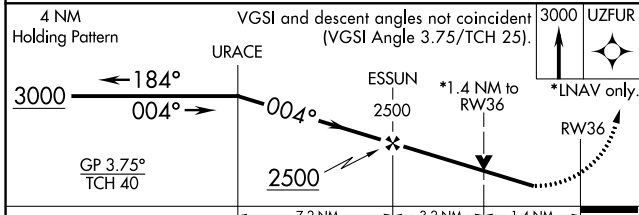
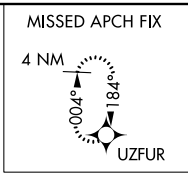
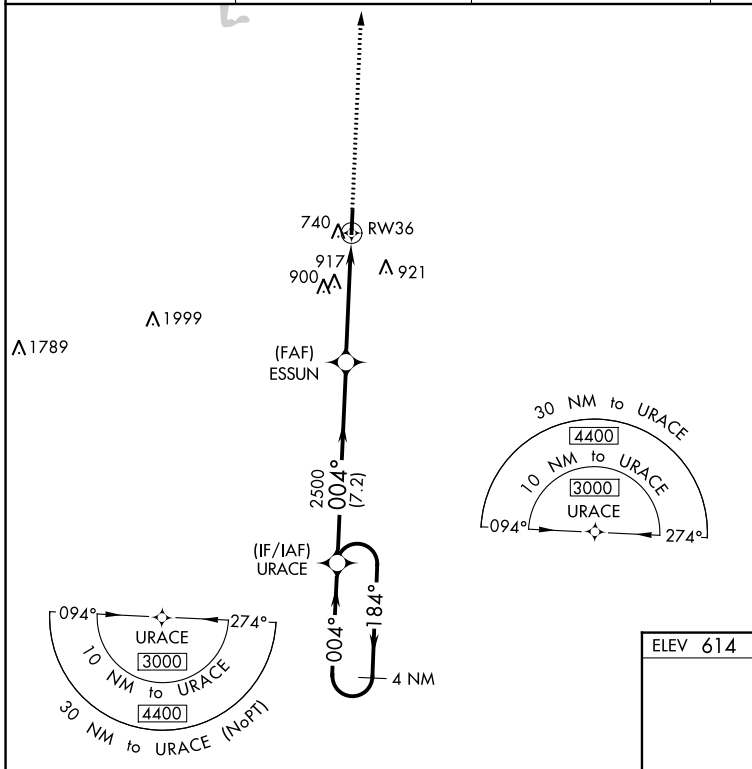
# RNAV (GPS) RWY 36

MURFREESBORO MUNI (MBT)

**▼** For uncompensated Baro-VNAV systems, procedure NA below -16° C (4°F) or above 54° C (130°F). Rwy 36 helicopter visibility reduction below 3/4 SM NA. DME/DME RNP-0.3 NA.

**MISSED APPROACH:**  
Climb to 3000 direct UZFUR and hold.

AWOS-3 <b>133.975</b>	NASHVILLE APP CON <b>118.4 360.7</b>	GCO <b>135.075</b>	UNICOM <b>123.075</b> (CTAF)
--------------------------	---	-----------------------	---------------------------------



CATEGORY	A	B	C	D
LPV DA	914-7/8	300 (300-7/8)		NA
LNAV/VNAV DA	1030-1/8	416 (500-1/8)		NA
LNAV MDA	1180-1 566 (600-1)		1180-15/8 566 (600-15/8)	NA
<b>C</b> CIRCLING	1180-1 566 (600-1)		1280-13/4 666 (700-13/4)	NA

SE-1, 22 FEB 2024 to 21 MAR 2024

SE-1, 22 FEB 2024 to 21 MAR 2024