

WAAS CH 48833 W22A	APP CRS 226°	Rwy Idg 4599 TDZE 298 Apt Elev 298
--	------------------------	---

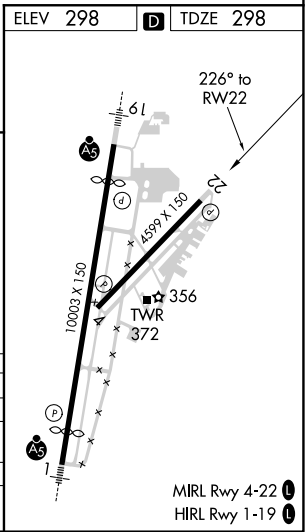
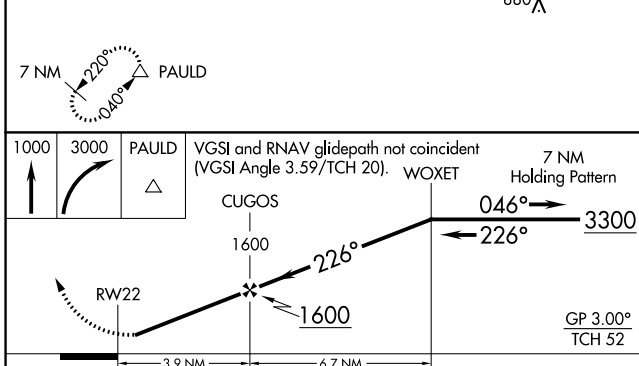
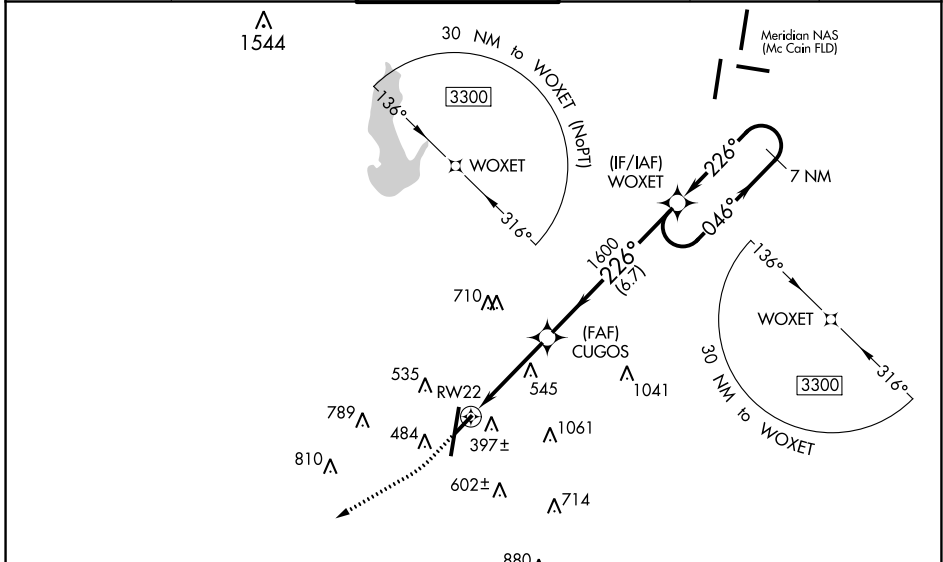
RNAV (GPS) RWY 22

KEY FLD (MEI)

⚠ Baro-VNAV NA when using Hattiesburg/Laurel Rgnl altimeter setting. For uncompensated Baro-VNAV systems, LNAV/VNAV NA below -8°C (18°F) or above 54°C (130°F). Circling NA southeast of Rws 1 and 22. DME/DME RNP-0.3 NA. When local altimeter setting not received, use Hattiesburg/Laurel Rgnl altimeter setting and increase all DA 138 feet and all MDA 140 feet; increase LPV all Cats visibility 3/8 mile, LNAV/VNAV all Cats visibility 3/4 mile, LNAV Cat B 1/4 mile, Cat C and D visibility 5/8 mile, and Circling Cat C visibility 1/2 mile and Cat B and D visibility 1/4 mile. Helicopter visibility reduction below 1 SM NA. Straight-in/Circling Rwy 22 NA at night.

MISSED APPROACH: Climb to 1000 then climbing right turn to 3000 direct PAULD and hold.

ATIS 126.475 291.675	MERIDIAN APP CON ★ 120.5 269.325	KEY TOWER ★ 133.975 (CTAF) 257.8	GND CON 121.9 348.6	CLNC DEL 121.9 348.6	UNICOM 122.95
--------------------------------	--	--	-------------------------------	--------------------------------	-------------------------



CATEGORY	A	B	C	D
LPV DA	562-1 264 (300-1)			
LNAV/VNAV DA	822-1 3/4 524 (600-1 3/4)			
LNAV MDA	940-1	642 (700-1)	940-1 7/8	642 (700-1 7/8)
CIRCLING	940-1	642 (700-1)	960-2	1120-2 3/4
			662 (700-2)	822 (900-2 3/4)

SC-4, 22 FEB 2024 to 21 MAR 2024

SC-4, 22 FEB 2024 to 21 MAR 2024