

WAAS CH <b>86938</b> <b>W18A</b>	APP CRS <b>176°</b>	Rwy Idg TDZE Apt Elev	<b>5513</b> <b>1298</b> <b>1304</b>
--	------------------------	-----------------------------	---

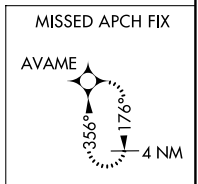
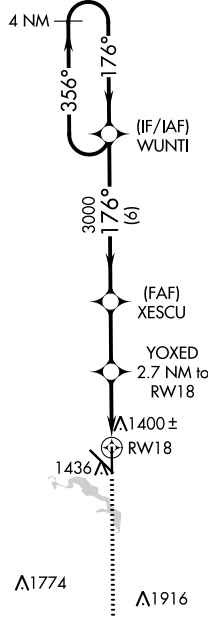
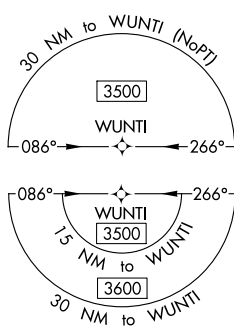
# RNAV (GPS) RWY 18

MITCHELL MUNI (MHE)

**⚠** For uncompensated Baro-VNAV systems, LNAV/VNAV NA below -20°C (-4°F) or above 54°C (130°F). DME/DME RNP-0.3 NA. When local altimeter setting not received use Huron Rgnl altimeter setting and increase LPV DA to 1637, LNAV/VNAV DA to 1685 and increase all MDA 100 feet. Increase LPV visibility all Cats to 1½ mile, LNAV/VNAV visibility all Cats to 1¾ mile and LNAV Cats C/D to 1¾ mile. Increase Circling Cat C visibility to 1¾ mile. Baro VNAV and VDP NA when using Huron Rgnl altimeter setting.

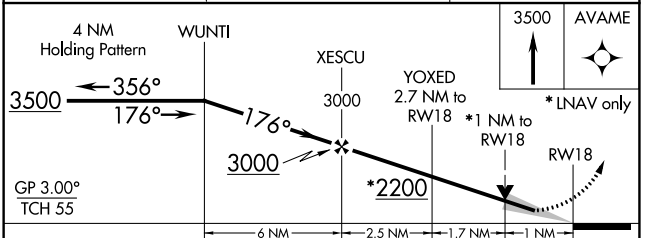
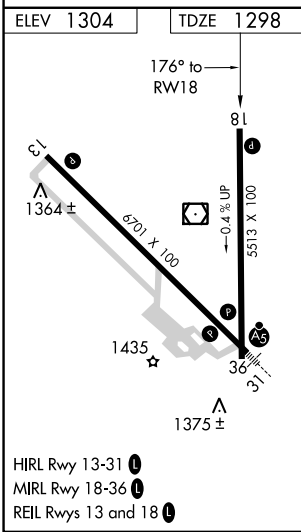
**MISSED APPROACH:** Climb to 3500 direct AVAME and hold.

ASOS <b>124.175</b>	MINNEAPOLIS CENTER <b>126.25 339.8</b>	UNICOM <b>122.8 (CTAF) 0</b>
------------------------	---	---------------------------------



NC-1, 22 FEB 2024 to 21 MAR 2024

NC-1, 22 FEB 2024 to 21 MAR 2024



CATEGORY	A	B	C	D
LPV DA		1548-1	250 (300-1)	
LNAV/VNAV DA		1596-1	298 (300-1)	
LNAV MDA		1660-1	362 (400-1)	
<b>C</b> CIRCLING	1740-1 436 (500-1)	1760-1 456 (500-1)	1820-1½ 516 (600-1½)	1860-2 556 (600-2)