

MILWAUKEE, WISCONSIN

AL-262 (FAA)

23222

WAAS CH <b>69226</b> <b>W07A</b>	APP CRS <b>076°</b>	Rwy Idg TDZE Apt Elev	<b>8012</b> <b>729</b> <b>729</b>
--	------------------------	-----------------------------	---

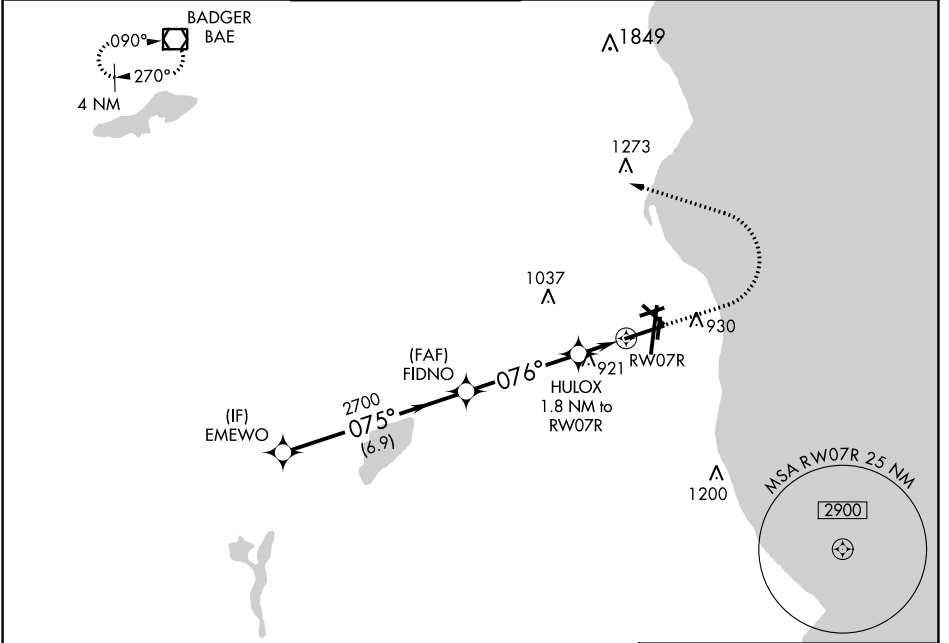
# RNAV (GPS) Z RWY 7R

GENERAL MITCHELL INTL (MKE)

For uncompensated Baro-VNAV systems, LNAV/VNAV NA below -20°C (-4°F) or above 54°C (130°F). DME/DME RNP-0.3 NA. # RVR 1800 authorized with use of FD or AP or HUD to DA.

MALSR AS	MISSED APPROACH: Climb to 2900 then climbing left turn to 3000 direct BAE VOR/DME and hold.
-------------	---

D-ATIS <b>126.4</b>	MILWAUKEE APP CON <b>126.5 307.0</b>	MILWAUKEE TOWER <b>124.575 269.05</b>	GND CON <b>121.8 263.125</b>	CLNC DEL <b>120.8</b>	CPDLC
------------------------	---	--	---------------------------------	--------------------------	-------



EC-3, 22 FEB 2024 to 21 MAR 2024

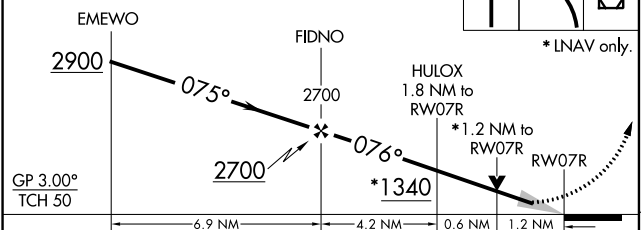
EC-3, 22 FEB 2024 to 21 MAR 2024

ELEV 729	<b>D</b>	TDZE 729
----------	----------	----------

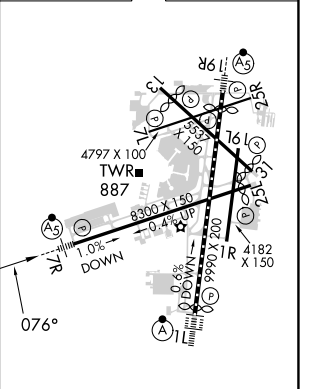
VGSI and RNAV glidepath not coincident (VGSI Angle 3.00/TCH 63).

2900	3000	BAE
------	------	-----

\* LNAV only.



CATEGORY	A	B	C	D
LPV DA #		929/24	200 (200-1/2)	
LNAV/VNAV DA		1232-1 1/4	503 (600-1 1/4)	
LNAV MDA	1180/24	451 (500-1/2)	1180/45	451 (500-7/8)
<b>C</b> CIRCLING	1240-1	511 (600-1)	1240-1 1/2 511 (600-1 1/2)	1360-2 631 (700-2)



TDZ/CL Rwy 1L  
REIL Rwy 1R, 7L,  
13, 25R, 25L and 31  
HIRL Rwy 1L-19R and 7R-25L  
MIRL Rwy 1R-19L, 13-31 and 7L-25R

MILWAUKEE, WISCONSIN  
Amdt 1F 26MAR20

42°57'N-87°54'W

# RNAV (GPS) Z RWY 7R

GENERAL MITCHELL INTL (MKE)