

WAAS CH 73014 W03A	APP CRS 034°	Rwy Idg TDZE 624 Apt Elev 625	5999
--	------------------------	---	-------------

RNAV (GPS) RWY 3

MENOMINEE RGNL (MNM)

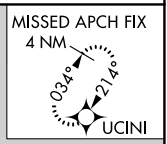
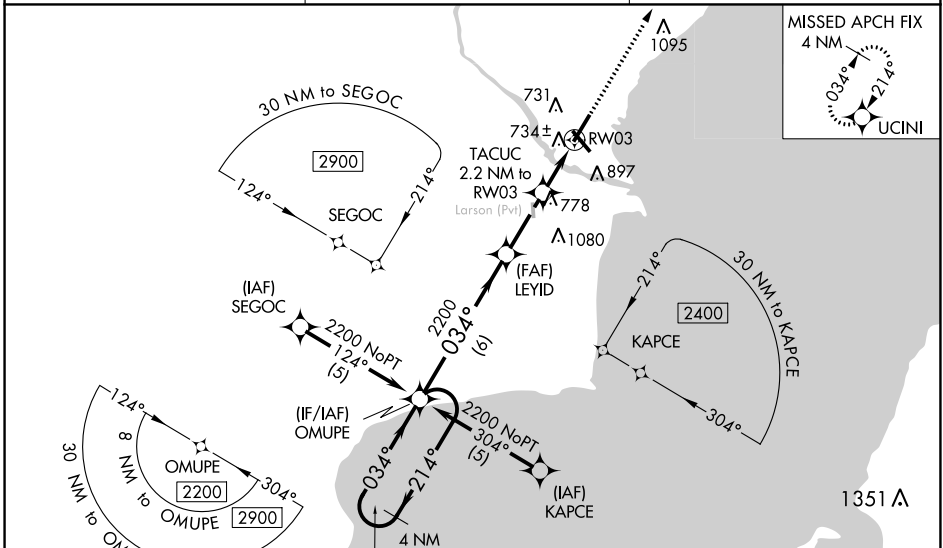
RNP APCH.

⚠ Circling Rwy 14, 32 NA at night. Baro-VNAV and VDP NA when using Sturgeon Bay altimeter setting. For uncompensated Baro-VNAV systems, LNAV/VNAV NA below -16°C or above 54°C. When local altimeter setting not received, use Sturgeon Bay altimeter setting and increase all DA/MDA 60 feet, increase Circling Cat C/D visibility ½ SM. For inop MALSRL when using Sturgeon Bay altimeter setting increase LNAV MDA visibility Cat C/D to 1¾. Inop table does not apply to LPV and LNAV/VNAV all Cats and LNAV MDA Cats A/B.



MALSRL
MISSED APPROACH:
Climb to 2300 direct UCINI and hold.

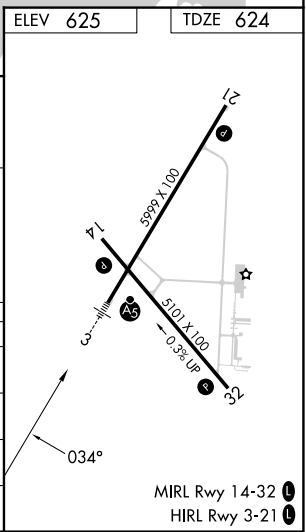
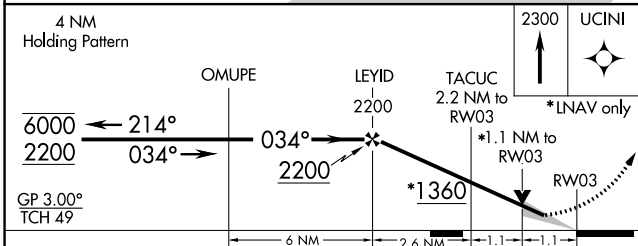
AWOS-3PT 121.45	GREEN BAY APP CON ★ 120.3 338.2	UNICOM 122.8 (CTAF)
---------------------------	---	-------------------------------



EC-1, 22 FEB 2024 to 21 MAR 2024

EC-1, 22 FEB 2024 to 21 MAR 2024

ELEV 625	TDZE 624
----------	----------



CATEGORY	A	B	C	D
LPV DA		824-1	200 (200-1)	
LNAV/VNAV DA		1150-1½	526 (600-1)	
LNAV MDA		1000-1	376 (400-1)	
C CIRCLING	1200-1	575 (600-1)	1200-1½ 575 (600-1½)	1380-2½ 755 (800-2½)

MIRL Rwy 14-32
HIRL Rwy 3-21