

WAAS CH 40421 W23A	APP CRS 233°	Rwy Idg TDZE Apt Elev	5717 1292 1313
--	------------------------	-----------------------------	---

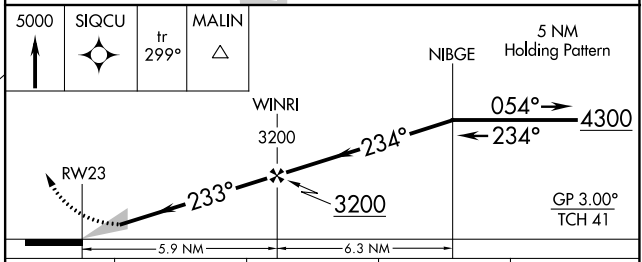
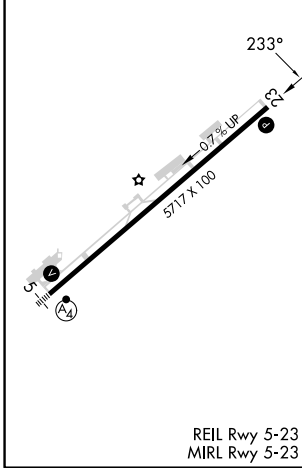
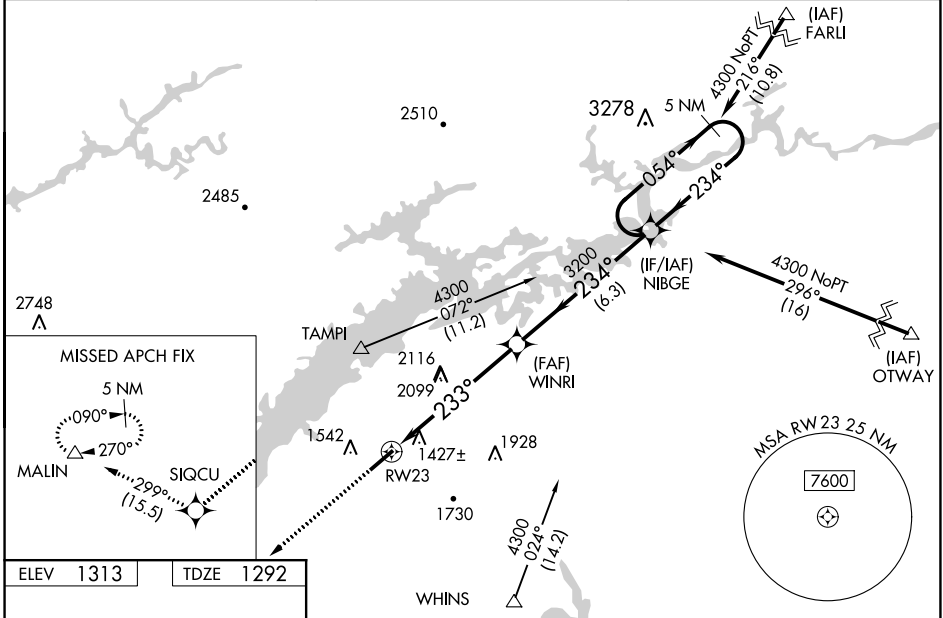
RNAV (GPS) RWY 23

MOORE-MURRELL (MOR)

▽ Baro-VNAV NA when using Mc Ghee Tyson altimeter setting. For uncompensated Baro-VNAV systems, LNAV/VNAV NA below -17°C (2°F) or above 35°C (95°F).
△ NA DME/DME RNP-0.3 NA. When local altimeter setting not received, use Mc Ghee Tyson altimeter setting and increase all DA 133 feet and all MDA 140 feet, increase LPV all Cats visibility to 1½ miles, LNAV/VNAV all Cats visibility to 5 miles, LNAV and Circling Cat B visibility to 1½ miles and LNAV Cats C and D and Circling Cat C visibility to 3 miles.

MISSED APPROACH:
Climb to 5000 direct SIQCU and on track 299° to MALIN and hold.

AWOS-3 126.725	KNOXVILLE APP CON 132.8 360.8	UNICOM 122.8 (CTAF) 0
--------------------------	---	---------------------------------



	A	B	C	D
LPV DA	1589-1 297 (300-1)			
LNAV/VNAV DA	2387-4 1095 (1100-4)			
LNAV MDA	2200-1¼ 908 (900-1¼)	2200-2½ 908 (900-2½)		
CIRCLING	2200-1¼ 887 (900-1¼)	2200-2¾ 887 (900-2¾)	2420-3 1107 (1200-3)	

SE-1, 22 FEB 2024 to 21 MAR 2024

SE-1, 22 FEB 2024 to 21 MAR 2024