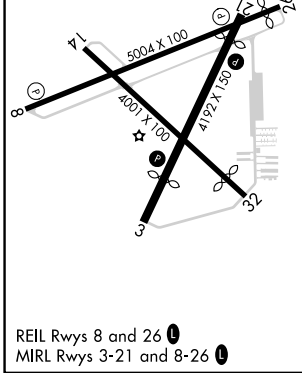
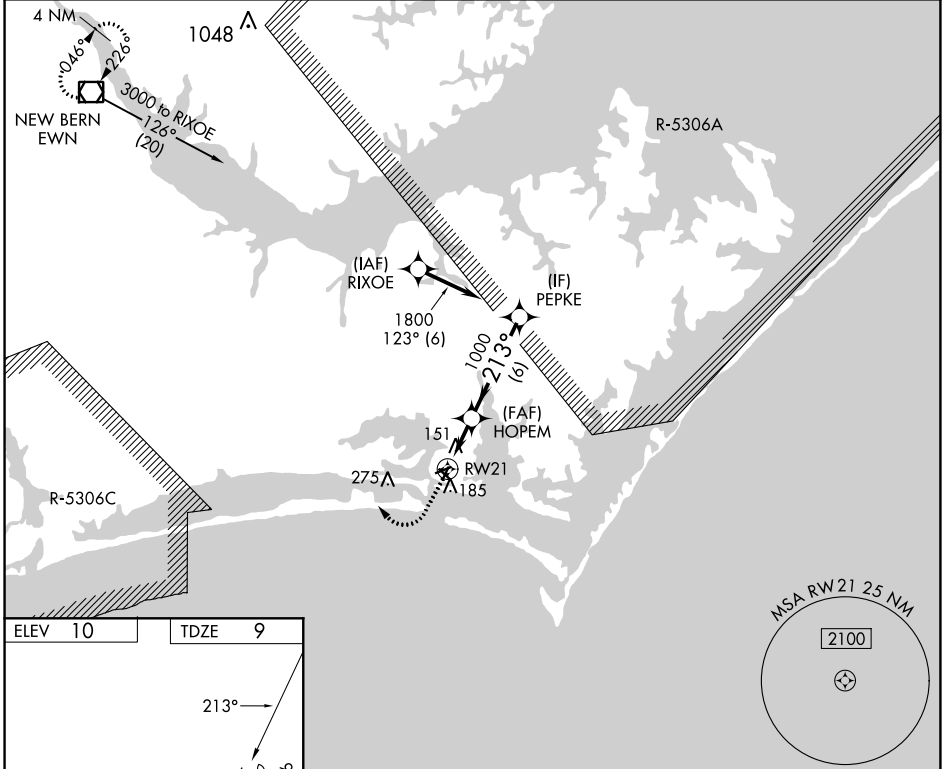


APP CRS 213°	Rwy Idg 3676
	TDZE 9
	Apt Elev 10

RNAV (GPS) RWY 21

MICHAEL J SMITH FLD (MR.H)

RNP APCH - GPS.			MISSED APPROACH: Climb to 500 then climbing right turn to 3000 direct EWN VOR/DME and hold.
ASOS 135.375	CHERRY POINT APP CON 132.575 268.7	CLNC DEL 125.65	UNICOM 122.8 (CTAF) 0



ELEV 10	TDZE 9	500		3000	EWN	VGSI and descent angles not coincident (VGSI Angle 4.00/TCH 54).	
		HOPEM		PEPKE		1800	
		RW21		1000		213°	
CATEGORY	A	B	C	D			
LNAV MDA	420-1	411 (500-1)	NA				
CIRCLING	540-1	530 (600-1)	NA				

SE-2, 22 FEB 2024 to 21 MAR 2024

SE-2, 22 FEB 2024 to 21 MAR 2024