

WAAS CH 72827 W09A	APP CRS 088°	Rwy Idg TDZE Apt Elev	4218 1021 1021
--	------------------------	-----------------------------	---

RNAV (GPS) RWY 9
UNION COUNTY (MRT)

RNP APCH - GPS.

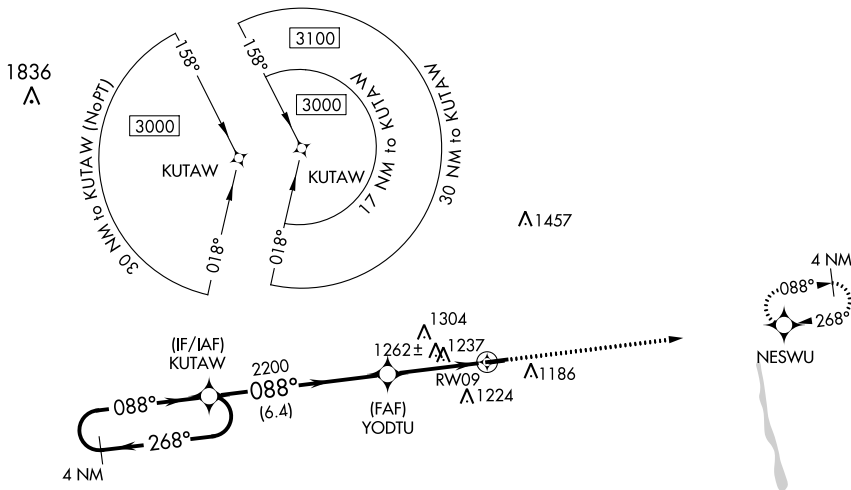
▼ Rwy 9 helicopter visibility reduction below 3/4 SM NA. When local altimeter setting not received, use John Glenn Columbus Intl altimeter setting and increase all MDAs 100 feet; increase LP visibility Cat C/D 1/4 SM, LNAV visibility Cat C/D 3/8 SM, and Circling visibility Cat C/D 1/2 SM. When Circling to Rwy 27 at night, operational VGSI required, remain on or above VGSI glidepath until threshold.

MISSED APPROACH: Climb to 3000 direct NESWU and hold.

AWOS-3
119.275

COLUMBUS APP CON
125.95 317.775

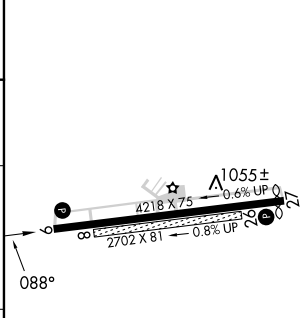
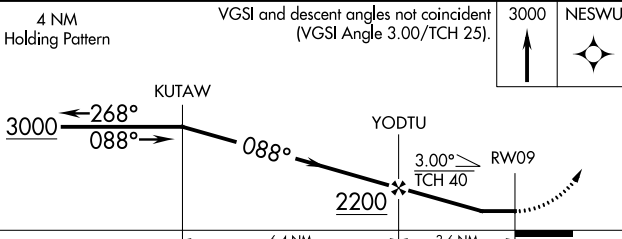
UNICOM
122.8 (CTAF)



EC-2, 22 FEB 2024 to 21 MAR 2024

EC-2, 22 FEB 2024 to 21 MAR 2024

ELEV 1021	TDZE 1021
-----------	-----------



CATEGORY	A	B	C	D
LP MDA	1500-1	479 (500-1)	1500-1 3/8	479 (500-1 3/8)
LNAV MDA	1520-1	499 (500-1)	1520-1 3/8	499 (500-1 3/8)
CIRCLING	1520-1 499 (500-1)	1540-1 519 (600-1)	1620-1 1/2 599 (600-1 1/2)	1620-2 599 (600-2)

MIRL Rwy 9-27
REIL Rwy 9 and 27