

WAAS CH <b>42522</b> <b>W18A</b>	APP CRS <b>185°</b>	Rwy Idg <b>8606</b> TDZE <b>864</b> Apt Elev <b>887</b>
--	------------------------	---

# RNAV (GPS) RWY 18

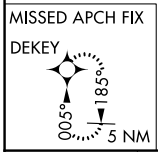
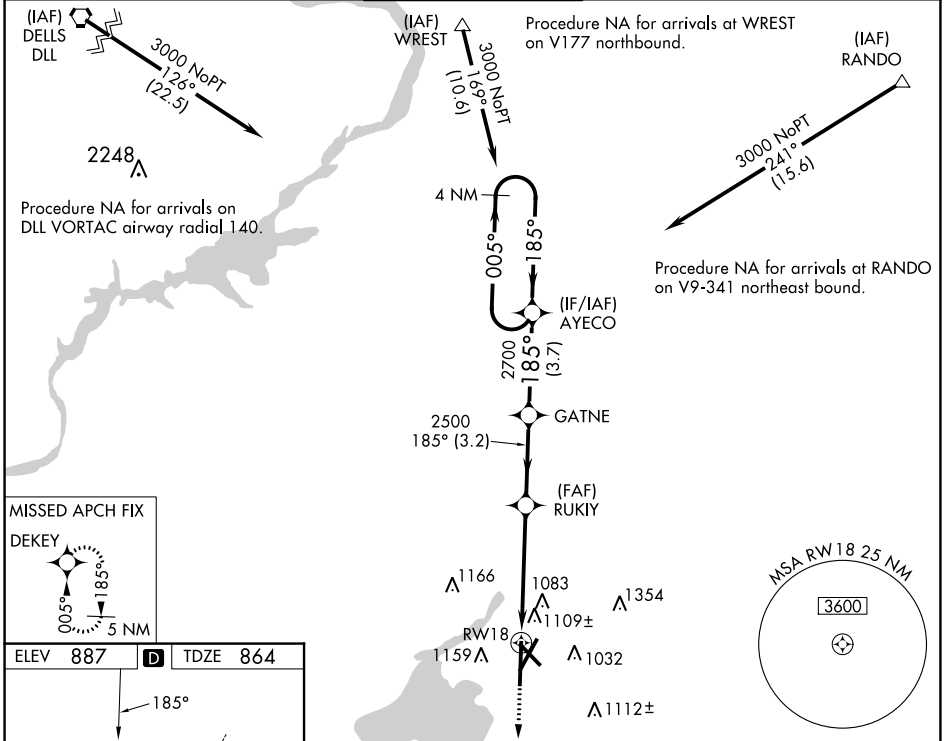
DANE COUNTY RGNL/TRUAX FLD (MSN)

**⚠** For uncompensated Baro-VNAV systems, LNAV/VNAV NA below -19°C (-2°F) or above 54°C (130°F), DME/DME RNP-0.3 NA. For inop MALSR, increase LNAV/VNAV all Cats visibility to 1 3/8 mile and LNAV Cat C/D visibility to 1 3/8 miles.  
**\*\* RVR 1800 authorized with use of FD or AP or HUD to DA.**

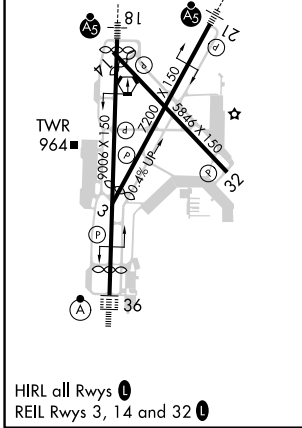


**MISSED APPROACH:**  
Climb to 3000 direct DEKEY and hold.

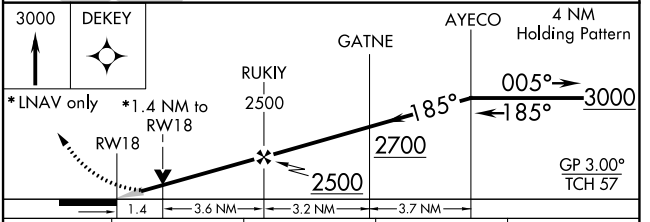
ATIS <b>124.65 278.3</b>	MADISON APP CON * <b>135.45 343.7</b>	MADISON TOWER * <b>119.3 (CTAF) 0 257.8</b>	GND CON <b>121.9 348.6</b>	CLNC DEL <b>121.625</b>	UNICOM <b>122.95</b>
-----------------------------	--	--	-------------------------------	----------------------------	-------------------------



ELEV <b>887</b>	<b>D</b>	TDZE <b>864</b>
-----------------	----------	-----------------



MADISON, WISCONSIN  
Amdt 2F 07DEC17



CATEGORY	A	B	C	D
LPV DA **	1064/24		200 (200-1/2)	
LNAV/VNAV DA	1360-1 1/4		496 (500-1 1/4)	
LNAV MDA	1360/24		1360/55 496 (500-1)	
<b>C</b> CIRCLING	1420-1 533 (600-1)	1460-1 573 (600-1)	1460-1 1/2 573 (600-1 1/2)	1700-2 3/4 813 (900-2 3/4)

# RNAV (GPS) RWY 18

43°08'N-89°20'W

EC-3, 22 FEB 2024 to 21 MAR 2024

EC-3, 22 FEB 2024 to 21 MAR 2024