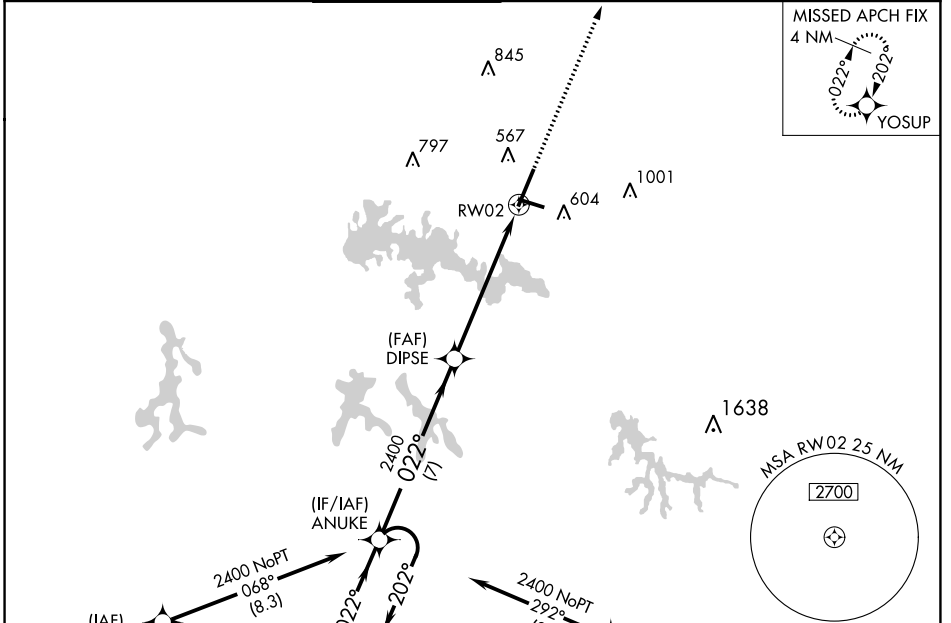


WAAS CH <b>61230</b> <b>W02A</b>	APP CRS <b>022°</b>	Rwy Idg TDZE Apt Elev	<b>8012</b> <b>466</b> <b>472</b>
--	------------------------	-----------------------------	---

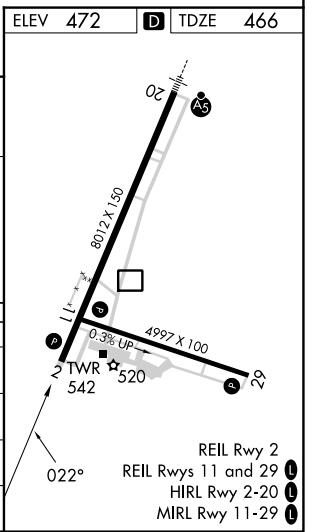
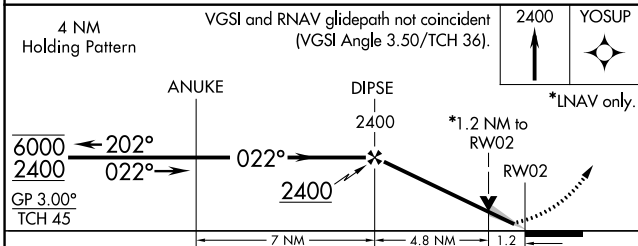
# RNAV (GPS) RWY 2

VETERANS AIRPORT OF SOUTHERN ILLINOIS (MWA)

RNP APCH.		CIRCLING RWY 11 NA AT NIGHT. FOR UNCOMPENSATED BARO-VNAV SYSTEMS, LNAV/VNAV NA BELOW -15°C OR ABOVE 54°C.		MISSED APPROACH: CLIMB TO 2400 DIRECT YOSUP AND HOLD.	
AWOS-3PT <b>119.675</b>	KANSAS CITY CENTER <b>127.475 346.275</b>	MARION TOWER ★ <b>128.4 (CTAF) 0</b>	CLNC DEL <b>127.475 (When twr closed)</b>	GND CON <b>121.7</b>	UNICOM <b>122.95</b>



ELEV 472	TDZE 466
----------	----------



CATEGORY	A	B	C	D
LPV DA		666-3/4	200 (200-3/4)	
LNAV/VNAV DA		753-7/8	287 (300-7/8)	
LNAV MDA	940-1	474 (500-1)	940-13/8	474 (500-13/8)
CIRCLING	940-1	468 (500-1)	1040-1 1/2	1340-2 3/4
			568 (600-1 1/2)	868 (900-2 3/4)

EC-3, 22 FEB 2024 to 21 MAR 2024

EC-3, 22 FEB 2024 to 21 MAR 2024