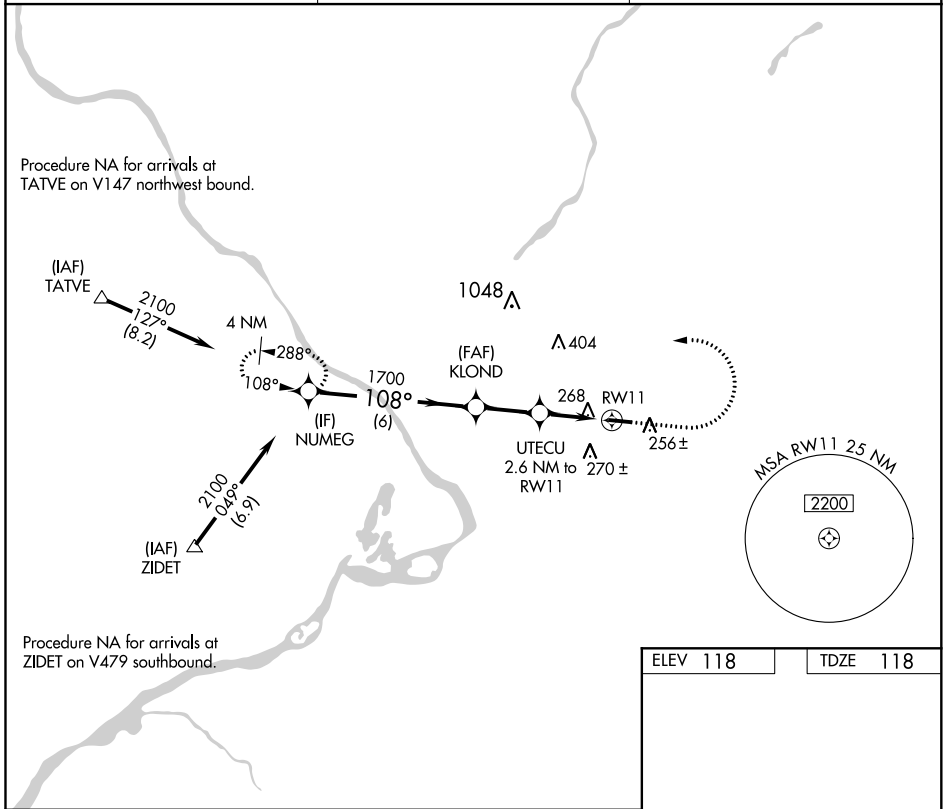


APP CRS	Rwy Idg	3877
108°	TDZE	118
	Apt Elev	118

RNAV (GPS) RWY 11

TRENTON-ROBBINSVILLE (N87)

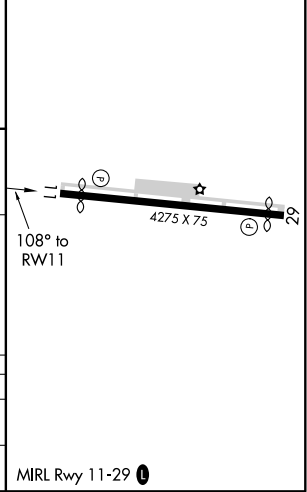
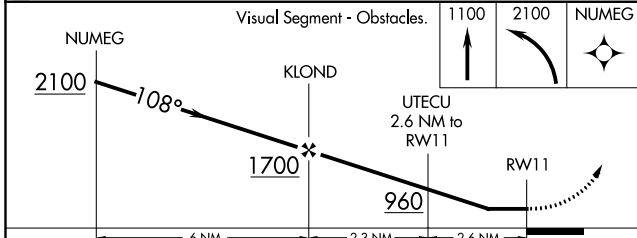
RNP APCH.		MISSED APPROACH: Climb to 1100, then climbing left turn to 2100 direct NUMEG and hold.
<p>▼ Procedure NA at night. Rwy 11 helicopter visibility reduction below 1 SM NA. Use Wrightstown altimeter setting.</p> <p>▲ NA</p>		
MC GUIRE APP CON	UNICOM	123.3 0
126.475 363.8	123.0 (CTAF)	



NE-2, 30 DEC 2021 to 27 JAN 2022

NE-2, 30 DEC 2021 to 27 JAN 2022

ELEV 118	TDZE 118
----------	----------



CATEGORY	A	B	C	D
LNNAV MDA	640-1	522 (600-1)	640-1 ⁵ / ₈	522 (600-1 ⁵ / ₈)
CIRCLING	680-1	562 (600-1)	680-1 ⁵ / ₈	760-2 642 (700-2)

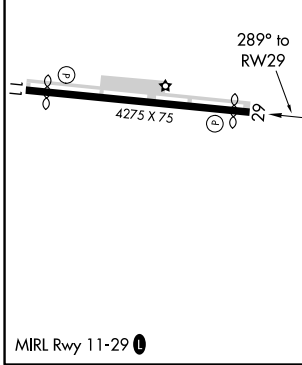
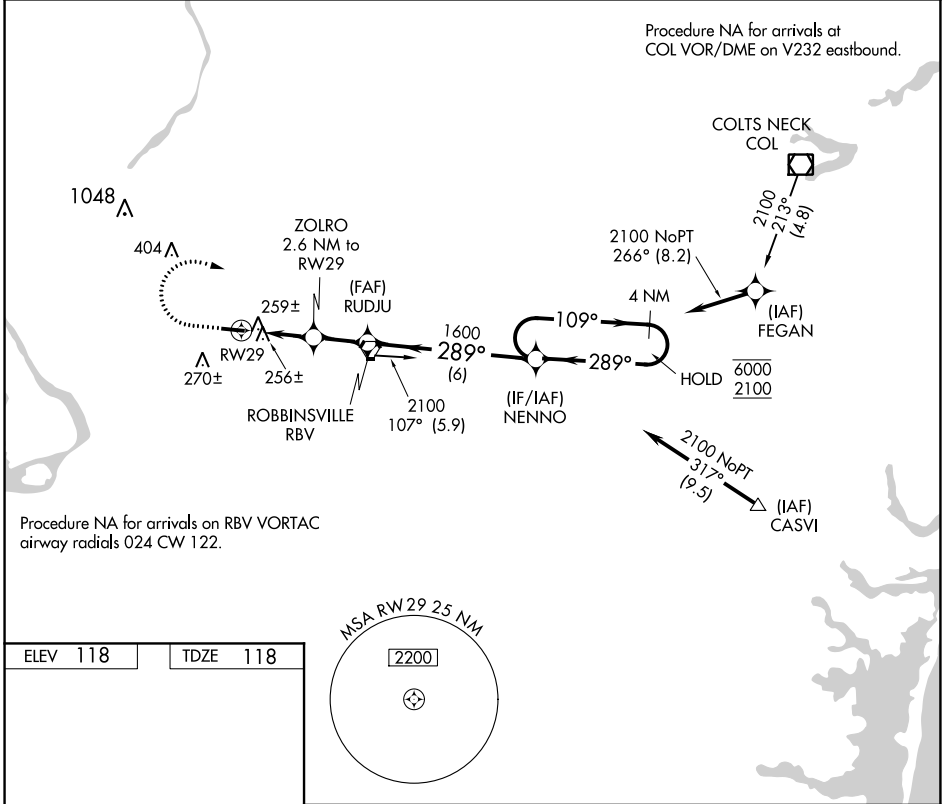
APP CRS 289°	Rwy ldg TDZE Apt Elev	3975 118 118
------------------------	-----------------------------	---

RNAV (GPS) RWY 29

TRENTON-ROBBINSVILLE (N87)

RNP APCH.	MISSED APPROACH: Climb to 1000, then climbing right turn to 2100 direct NENNO and hold.
<p>Procedure NA at night. Rwy 29 helicopter visibility reduction below 1 SM NA. Use Wrightstown altimeter setting.</p>	

MC GUIRE APP CON 126.475 363.8	UNICOM 123.0 (CTAF)	123.3 0
--	-------------------------------	----------------



ELEV 118	TDZE 118	MSA RWY 29 25 NM [2200]			
1000	2100	NENNO	Visual Segment - Obstacles.		
↑	↷	✦	RUDJU	NENNO	4 NM Holding Pattern
RWY 29		ZOLRO 2.6 NM to RWY 29	289°	109° →	6000 / 2100
2.6 NM		1.9 NM	6 NM	← 289°	
CATEGORY	A	B	C	D	
LNAV MDA	540-1	422 (500-1)	540-1¼	422 (500-1¼)	
CIRCLING	680-1	562 (600-1)	680-1½ 562 (600-1½)	760-2 642 (700-2)	

NE-2, 30 DEC 2021 to 27 JAN 2022

NE-2, 30 DEC 2021 to 27 JAN 2022

VORTAC RBV 113.8 Chan 85	APP CRS 288°	Rwy Idg 3975 TDZE 118 Apt Elev 118
--	------------------------	---

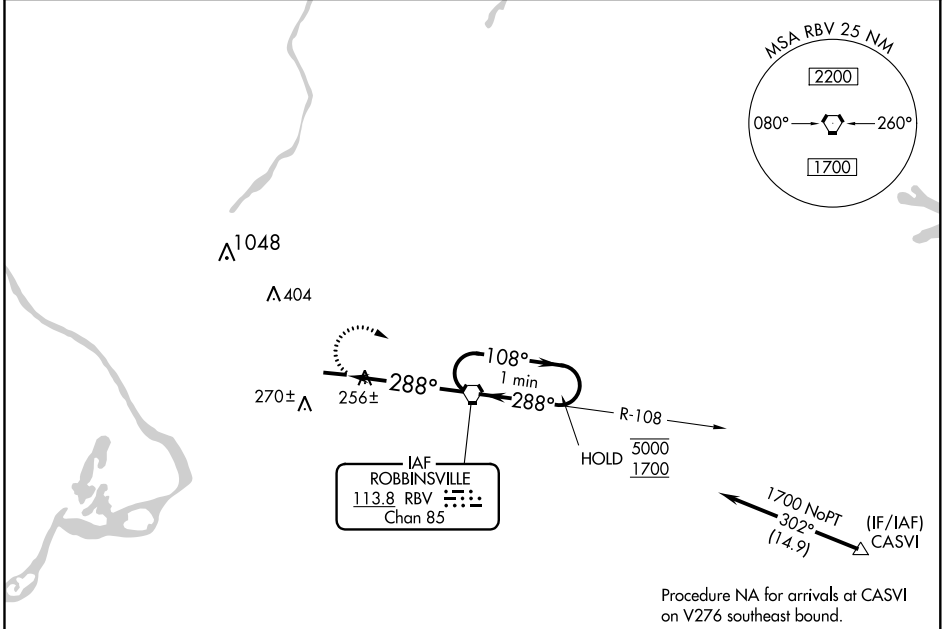
VOR RWY 29

TRENTON-ROBBINSVILLE (N87)

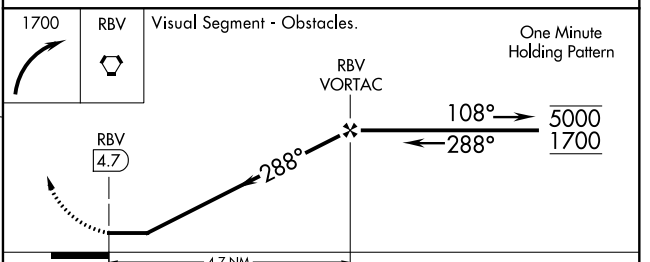
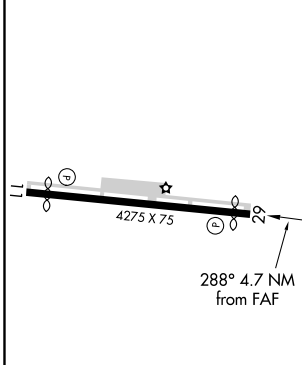
Procedure NA at night.
NA Rwy 29 helicopter visibility reduction below 1 SM NA.
 Use Wrightstown altimeter setting.

MISSED APPROACH: Climbing right turn to 1700 direct RBV VORTAC and hold.

MC GUIRE APP CON 126.475 363.8	UNICOM 123.0 (CTAF)	123.3 0
--	-------------------------------	-----------------------



ELEV 118	TDZE 118
-----------------	-----------------



MIRL Rwy 11-29 0	FAF to MAP 4.7 NM							
Knots	60	90	120	150	180			
Min:Sec	4:42	3:08	2:21	1:53	1:34			
CATEGORY	A		B		C		D	
S-29	620-1		502 (600-1)		620-1 $\frac{3}{8}$		502 (600-1 $\frac{3}{8}$)	
CIRCLING	680-1		562 (600-1)		680-1 $\frac{1}{2}$		760-2	
					562 (600-1 $\frac{1}{2}$)		642 (700-2)	

NE-2, 30 DEC 2021 to 27 JAN 2022

NE-2, 30 DEC 2021 to 27 JAN 2022