

GARLAND FIVE DEPARTURE  
(GARLS.TTT) 25JAN24

FORT WORTH, TEXAS  
FORT WORTH NAS JRB (CARSWELL FLD) (NFWW)

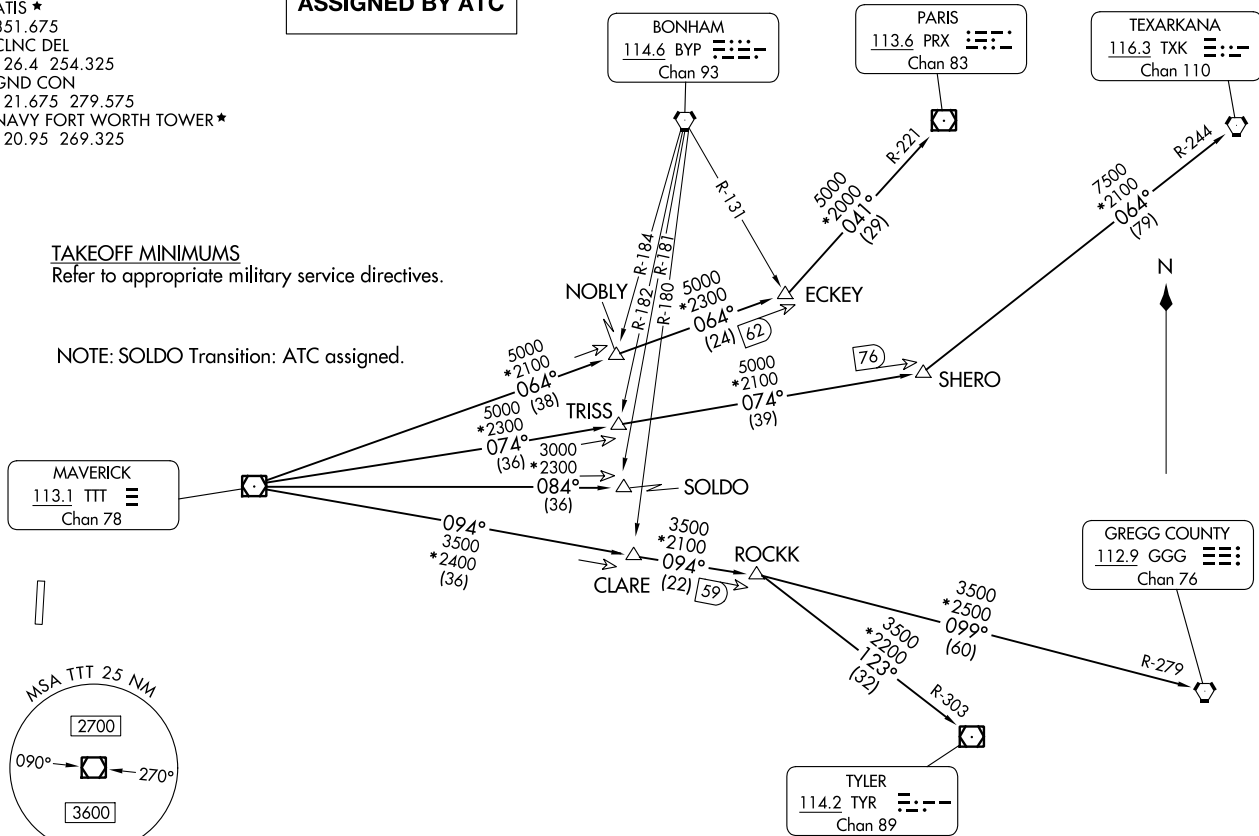
REGIONAL DEP CON  
125.8 257.95  
ATIS \*  
351.675  
CLNC DEL  
126.4 254.325  
GND CON  
121.675 279.575  
NAVY FORT WORTH TOWER \*  
120.95 269.325

**TOP ALTITUDE:  
ASSIGNED BY ATC**

**RADAR and DME required.**

**TAKEOFF MINIMUMS**  
Refer to appropriate military service directives.

NOTE: SOLDO Transition: ATC assigned.



NOTE: Chart not to scale.

(CONTINUED ON FOLLOWING PAGE)

(GARLS.TTT) 24025  
GARLAND FIVE DEPARTURE

AL-160 (FAA)

FORT WORTH NAS JRB (CARSWELL FLD) (NFWW)  
FORT WORTH, TEXAS



DEPARTURE ROUTE DESCRIPTION

When entering controlled airspace, fly assigned heading for RADAR vectors to appropriate route. Maintain ATC assigned altitude.

GREGG COUNTY TRANSITION (GARL5.GGG): From over TTT VOR/DME on TTT R-094 to ROCKK, then on GGG R-279 to GGG VORTAC.

PARIS TRANSITION (GARL5.PRX): From over TTT VOR/DME on TTT R-064 to ECKEY, then on PRX R-221 to PRX VOR/DME.

SOLDO TRANSITION (GARL5.SOLDO): From over TTT VOR/DME on TTT R-084 to SOLD0.

TEXARKANA TRANSITION (GARL5.TXK): From over TTT VOR/DME on TTT R-074 to SHERO, then on TXK R-244 to TXK VORTAC.

TYLER TRANSITION (GARL5.TYR): From over TTT VOR/DME on TTT R-094 to ROCKK, then on TYR R-303 to TYR VOR/DME.

SC-2, 22 FEB 2024 to 21 MAR 2024

SC-2, 22 FEB 2024 to 21 MAR 2024