

CORPUS CHRISTI, TEXAS

# RNAV (GPS) RWY 31L

CORPUS CHRISTI NAS (TRUAX FLD) (KNGP)

[USN]

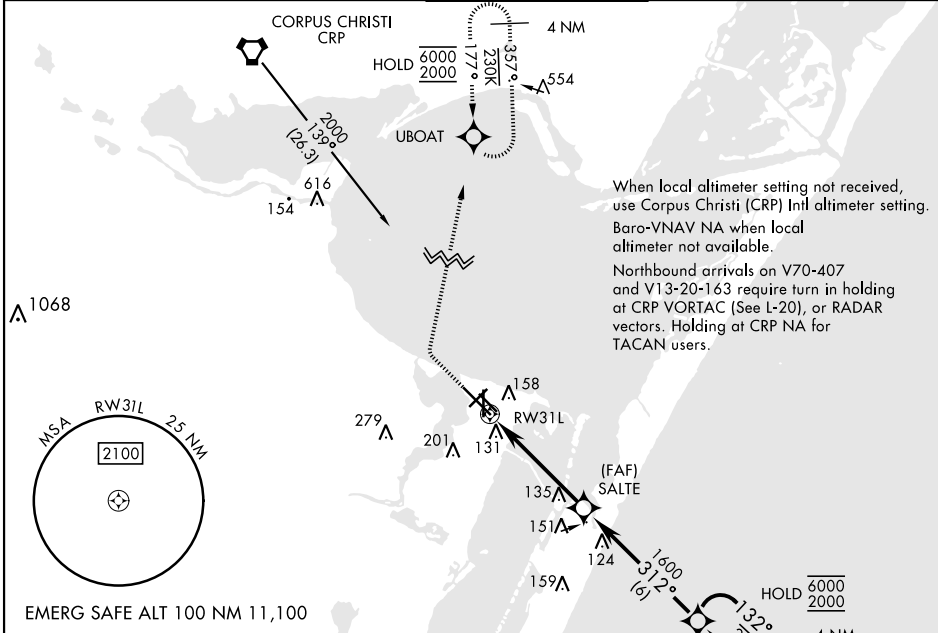
APCH CRS	Rwy Idg	8001
312°	TDZE	17
	Arprt Elev	18

RNP APCH

▼ For uncompensated Baro-VNAV systems, LNAV/VNAV NA below -15°C (5°F) or above 54°C (129°F).

MISSED APPROACH: Climb to 600, then climbing right turn to 2000 direct UBOAT and hold.

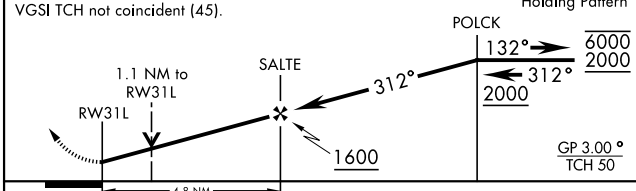
ATIS ★	APP CON	NAVY CORPUS TOWER ★	GND CON	CLNC DEL	ASR/PAR
127.9 290.9	128.675 343.75	134.85 340.2	118.7 257.85	314.3	



When local altimeter setting not received, use Corpus Christi (CRP) Intl altimeter setting. Baro-VNAV NA when local altimeter not available.

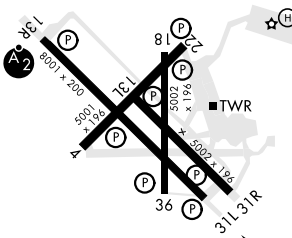
Northbound arrivals on V70-407 and V13-20-163 require turn in holding at CRP VORTAC (See L-20), or RADAR vectors. Holding at CRP NA for TACAN users.

600	2000	UBOAT	VDP NA when using Corpus Christi (CRP) Intl altimeter setting
-----	------	-------	---



CATEGORY	A	B	C	D
LNAV/VNAV DA	412-1½		395	(400-1½)
LNAV MDA	420-1	403 (500-1)	420-1½	403 (500-1½)
<b>C</b> CIRCLING	460-1 442 (500-1)	480-1 462 (500-1)	520-1½ 502 (600-1½)	580-2 562 (600-2)
CORPUS CHRISTI (CRP) INTL ALTIMETER SETTING				
LNAV MDA	460-1	443 (500-1)	460-1½	443 (500-1½)
<b>C</b> CIRCLING	500-1	482 (500-1)	540-1½ 522 (600-1½)	620-2 602 (700-2)

ELEV 18	TDZE 17
---------	---------



HIRL Rwy 4-22, 13R-31L  
HIRL Rwy 13L-31R, 18-36  
REIL Rwy 4-22, 13L-31R, 18-36, 31L

CORPUS CHRISTI, TEXAS  
Amdt 2 30NOV23

27°42'N-97°17'W

CORPUS CHRISTI NAS (TRUAX FLD) (KNGP)

# RNAV (GPS) RWY 31L

SC-3, 22 FEB 2024 to 21 MAR 2024

SC-3, 22 FEB 2024 to 21 MAR 2024