

CORPUS CHRISTI, TEXAS

# RNAV (GPS) RWY 31R

CORPUS CHRISTI NAS (TRUAX FLD) (KNGP)

[USN]

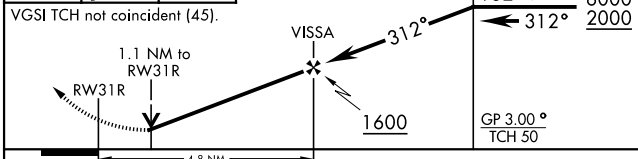
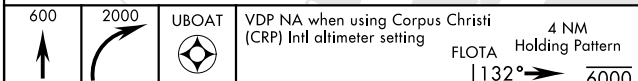
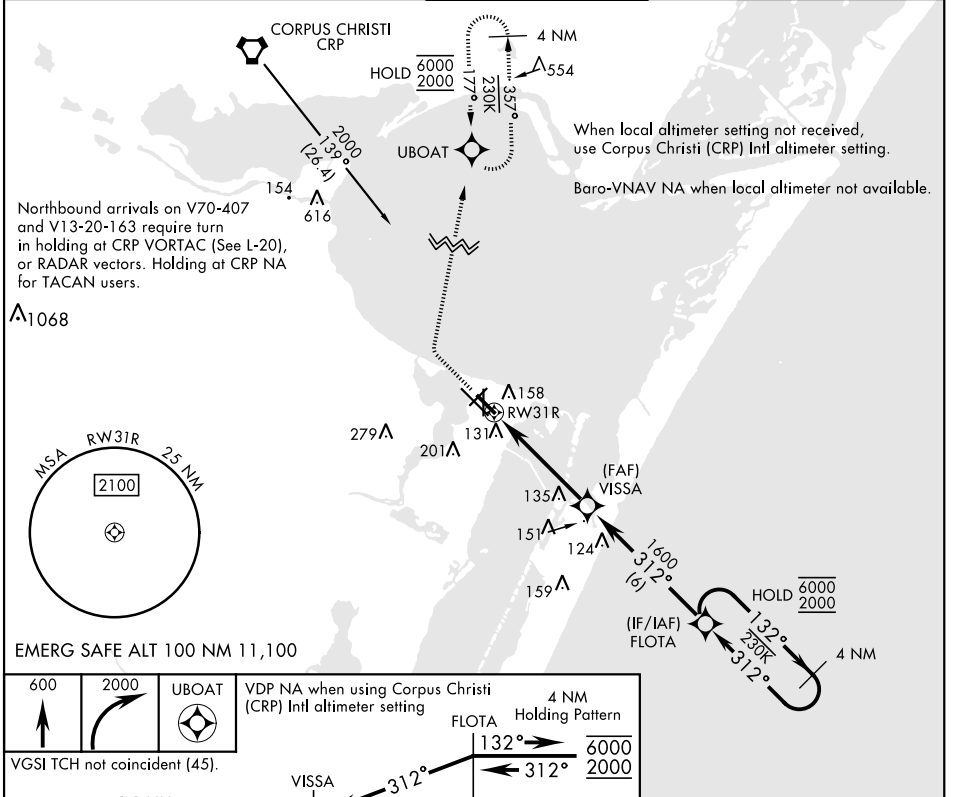
APCH CRS	Rwy Idg	5002
312°	TDZE	18
	Arprt Elev	18

RNP APCH

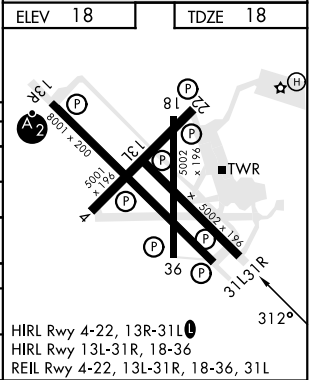
MISSED APPROACH: Climb to 600, then climbing right turn to 2000 direct UBOAT and hold.

▼ For uncompensated Baro-VNAV systems, LNAV/VNAV NA below -15°C (5°F) or above 54°C (129°F).

ATIS ★ <b>127.9 290.9</b>	APP CON <b>128.675 343.75</b>	NAVY CORPUS TOWER ★ <b>134.85 340.2</b>	GND CON <b>118.7 257.85</b>	CLNC DEL <b>314.3</b>	ASR/PAR
------------------------------	----------------------------------	--	--------------------------------	--------------------------	---------



ELEV	18	TDZE	18	
CATEGORY	A	B	C	D
LNAV/VNAV DA	411-1½		393	(400-1½)
LNAV MDA	420-1	402 (500-1)	420-1½	402 (500-1½)
CIRCLING	460-1 442 (500-1)	480-1 462 (500-1)	520-1½ 502 (600-1½)	580-2 562 (600-2)
CORPUS CHRISTI (CRP) INTL ALTIMETER SETTING				
LNAV MDA	460-1	442 (500-1)	460-1½	442 (500-1½)
CIRCLING	500-1	482 (500-1)	540-1½ 522 (600-1½)	620-2 602 (700-2)



CORPUS CHRISTI, TEXAS  
Amdt 2 25JAN24

27°42'N-97°17'W

CORPUS CHRISTI NAS (TRUAX FLD) (KNGP)

# RNAV (GPS) RWY 31R

SC-3, 22 FEB 2024 to 21 MAR 2024

SC-3, 22 FEB 2024 to 21 MAR 2024