

WAAS CH <b>69500</b> <b>W34A</b>	APP CRS <b>341°</b>	Rwy ldg TDZE Apt Elev	<b>5000</b> <b>3035</b> <b>3045</b>
--	------------------------	-----------------------------	---

# RNAV (GPS) RWY 34

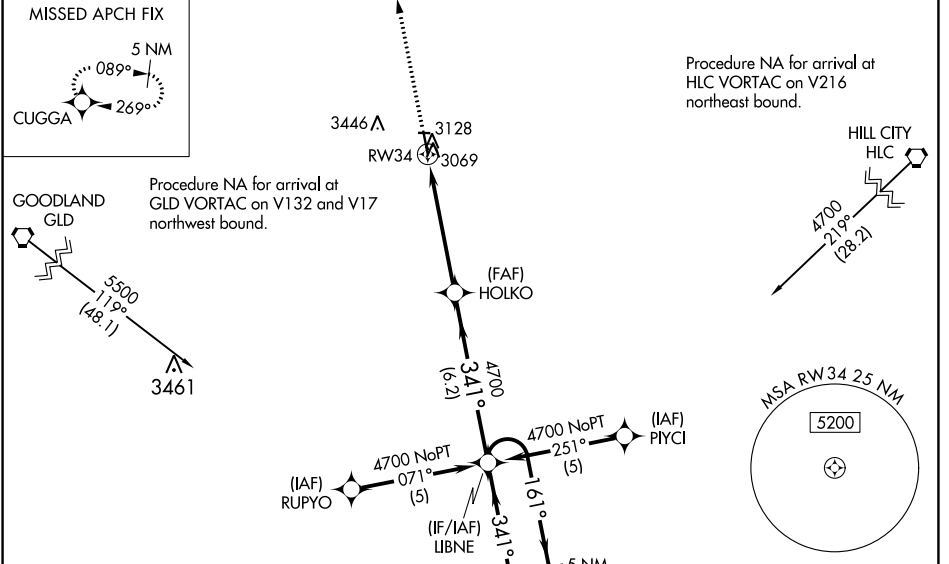
OAKLEY MUNI (OEL)

RNP APCH - GPS.

**▼** When local altimeter setting not received, use Renner Fld/Goodland Muni altimeter setting: increase LPV DA to 3471 feet and LNAV/VNAV DA to 3658 feet; increase all MDA 200 feet and visibility LNAV Cat C  $\frac{3}{8}$  SM and Circling Cat C  $\frac{3}{4}$  SM.  
**▲** For uncompensated Baro-VNAV systems, LNAV/VNAV NA below -21°C or above 42°C. Baro-VNAV NA when using Renner Fld/Goodland Muni altimeter setting. Circling NA to Rws 8 and 26. Circling Rwy 16 NA at night.

MISSED APPROACH: Climb to 4700 direct CUGGA and hold.

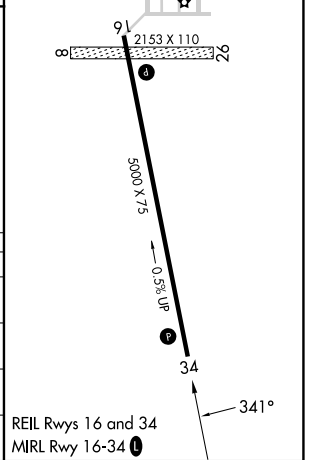
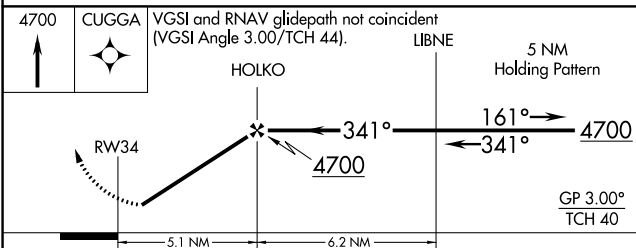
AWOS-3 <b>118.325</b>	DENVER CENTER <b>132.7 226.675</b>	UNICOM <b>122.8</b> (CTAF) <b>1</b>
--------------------------	---------------------------------------	--



NC-2, 22 FEB 2024 to 21 MAR 2024

NC-2, 22 FEB 2024 to 21 MAR 2024

ELEV 3045	<b>D</b> TDZE 3035
-----------	--------------------



CATEGORY	A	B	C	D
LPV DA		3285-1	250 (300-1)	NA
LNAV/VNAV DA		3472-1½	437 (500-1½)	NA
LNAV MDA		3380-1	345 (400-1)	NA
CIRCLING	3480-1½ 435 (500-1½)	3800-1½ 755 (800-1½)	3800-2¼ 755 (800-2¼)	NA