

(FLMGO1.FLMGO) 22139

AL-256 (FAA)

MIAMI-OPA LOCKA EXEC (OPF)

FLMGO ONE DEPARTURE (RNAV)

MIAMI, FLORIDA

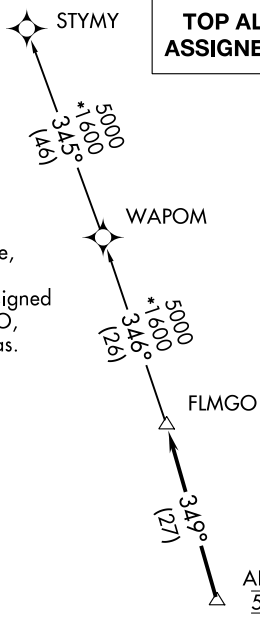
RNAV 1 - DME/DME/IRU or GPS.

RADAR required.

**TOP ALTITUDE:
ASSIGNED BY ATC**

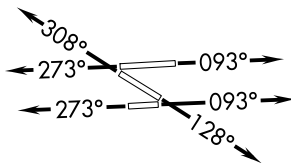
ATIS
125.9
CLNC DEL
119.2
GND CON
120.025
OPA LOCKA TOWER*
134.675 (CTAF)
MIAMI DEP CON
119.45 290.325

- NOTE: Jet aircraft only.
- NOTE: Accelerate to 250K, if unable, advise ATC.
- NOTE: WAPOM Transition ATC assigned except aircraft landing: MCO, DAB, and MLB terminal areas.



TAKEOFF MINIMUMS

- Rwy 9L: Standard with minimum climb of 500' per NM to 1000.
- Rwy 9R: Standard with minimum climb of 500' per NM to 700.
- Rwys 12, 27R: Standard with minimum climb of 500' per NM to 600.
- Rwys 27L, 30: Standard.



NOTE: Chart not to scale.



DEPARTURE ROUTE DESCRIPTION

- TAKEOFF RUNWAYS 9L/R: Climb on heading 093° or as assigned for RADAR vectors to cross ALNZO at 5000, thence. . . .
- TAKEOFF RUNWAY 12: Climb on heading 128° or as assigned for RADAR vectors to cross ALNZO at 5000, thence. . . .
- TAKEOFF RUNWAYS 27L/R: Climb on heading 273° or as assigned for RADAR vectors to cross ALNZO at 5000, thence. . . .
- TAKEOFF RUNWAY 30: Climb on heading 308° or as assigned for RADAR vectors to cross ALNZO at 5000, thence. . . .

. . . on track 349° to FLMGO, then on assigned transition. Maintain ATC assigned altitude. Expect filed altitude within 10 minutes after departure.

- STYMY TRANSITION (FLMGO1.STYMY)
- WAPOM TRANSITION (FLMGO1.WAPOM)

FLMGO ONE DEPARTURE (RNAV)
(FLMGO1.FLMGO) 19MAY22

MIAMI, FLORIDA
MIAMI-OPA LOCKA EXEC (OPF)

SE-3, 22 FEB 2024 to 21 MAR 2024

SE-3, 22 FEB 2024 to 21 MAR 2024