

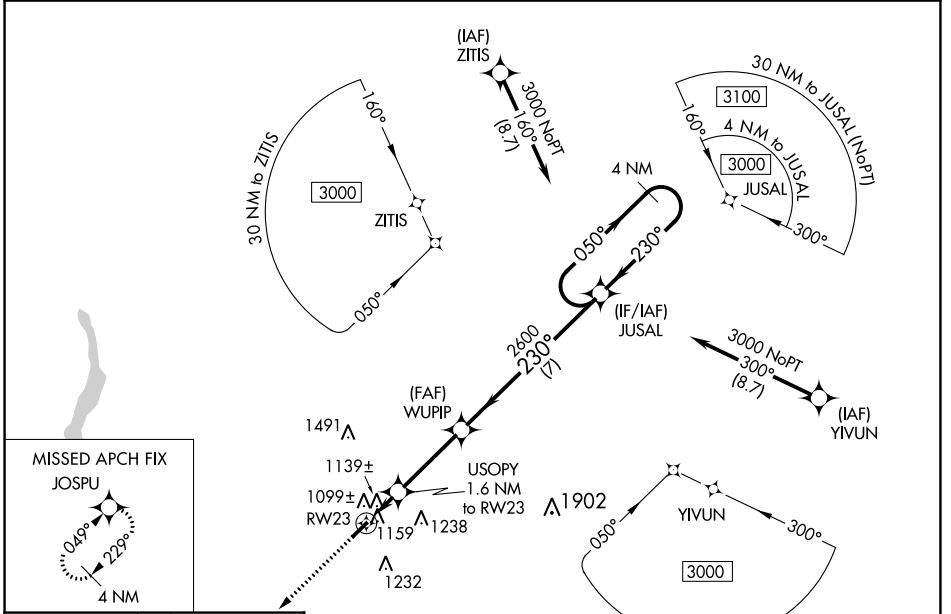
WAAS CH 56528 W23A	APP CRS 230°	Rwy Idg 3741 TDZE 1041 Apt Elev 1041
--	------------------------	---

RNAV (GPS) RWY 23

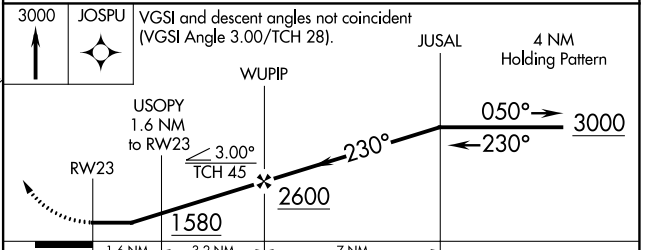
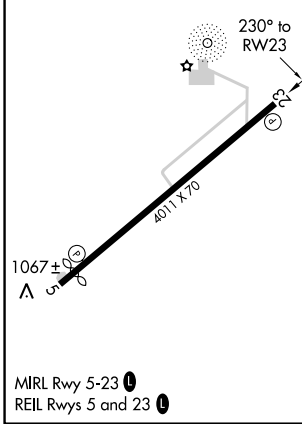
MIAMI UNIVERSITY (OXD)

RNP APCH - GPS.	When Circling to Rwy 5 at night, operational VGSI required, remain on or above VGSI glidepath until threshold. Rwy 23 helicopter visibility reduction below 3/4 SM NA. When local altimeter setting not received, use Covington altimeter setting and increase all MDA 100 feet, increase LP Cat C visibility 3/8 mile, increase LNAV and Circling Cat C visibility 1/4 mile.	MISSED APPROACH: Climb to 3000 direct JOSPU and hold.
-----------------	---	--

AWOS-3PT 118.625	CINCINNATI APP CON 121.0 254.25	UNICOM 122.8 (CTAF)	122.9 0
----------------------------	---	-------------------------------	----------------



ELEV 1041	TDZE 1041
-----------	-----------



CATEGORY	A	B	C	D
LP MDA	1400-1		359 (400-1)	NA
LNAV MDA	1420-1	379 (400-1)	1420-1 1/8 379 (400-1 1/8)	NA
CIRCLING	1460-1 419 (500-1)	1600-1 559 (600-1)	1600-1 1/2 559 (600-1 1/2)	NA

EC-2, 22 FEB 2024 to 21 MAR 2024

EC-2, 22 FEB 2024 to 21 MAR 2024