

APP CRS <b>115°</b>	Rwy Idg <b>2660</b>
	TDZE <b>30</b>
	Apt Elev <b>30</b>

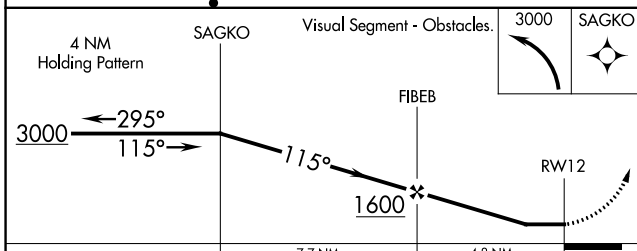
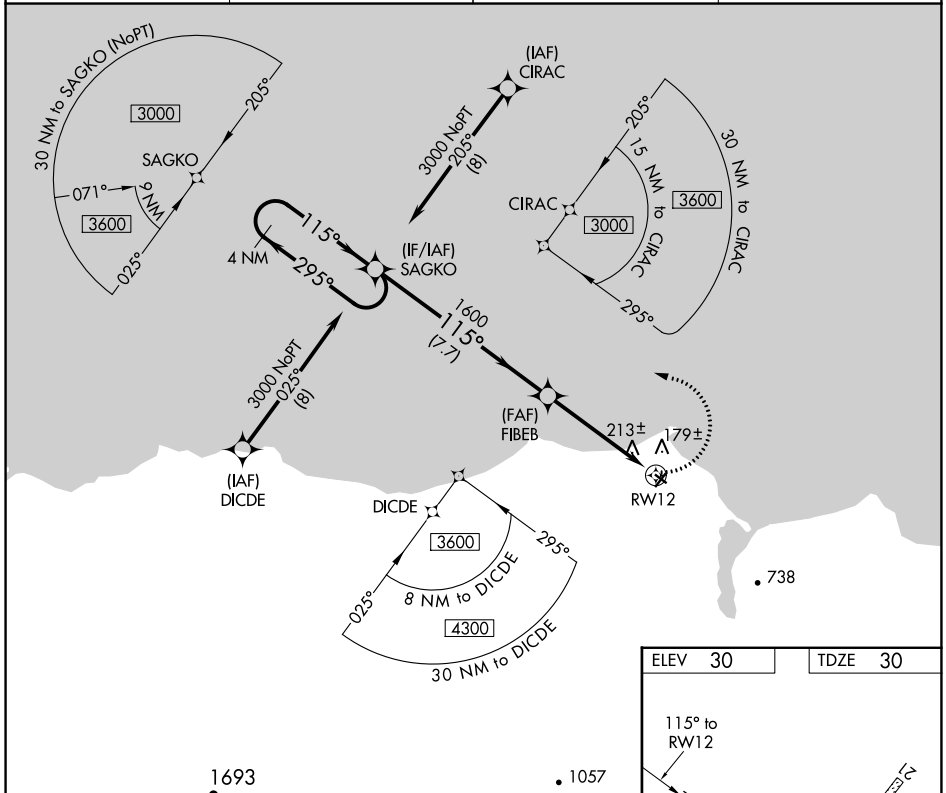
# RNAV (GPS) RWY 12

DEERING (DEE)(PADE)

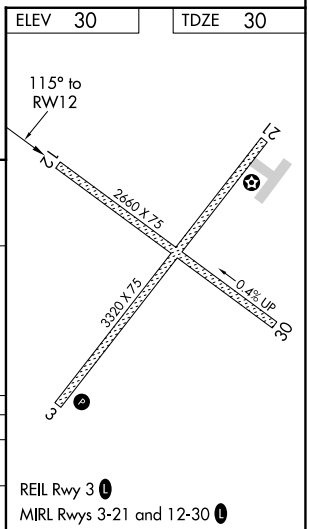
**⚠** DME/DME RNP-0.3 NA.  
**⚠** Rwy 12 helicopter visibility reduction below 1 SM NA.  
**⚠** -40°C Straight-in Rwy 12 NA at night, Circling Rwy 12, 30 NA at night.

MISSED APPROACH: Climbing left turn to 3000 direct SAGKO and hold.

ASOS <b>135.5</b>	ANCHORAGE CENTER <b>119.2 263.0</b>	KOTZEBUE RADIO <b>122.25</b>	CTAF <b>122.9</b>
----------------------	--	---------------------------------	----------------------



CATEGORY	A	B	C	D
LNVA MDA	520-1	490 (500-1)	520-1 $\frac{3}{8}$ 490 (500-1 $\frac{3}{8}$ )	NA
<b>C</b> CIRCLING	680-1 650 (700-1)	840-1 810 (900-1)	840-2 $\frac{1}{2}$ 810 (900-2 $\frac{1}{2}$ )	NA



REIL Rwy 3 **Ⓛ**  
 MIRL Rwy 3-21 and 12-30 **Ⓛ**

AK, 25 JAN 2024 to 21 MAR 2024

AK, 25 JAN 2024 to 21 MAR 2024

WAAS CH <b>56241</b> <b>W21A</b>	APP CRS <b>207°</b>	Rwy Idg <b>3320</b> TDZE <b>25</b> Apt Elev <b>30</b>
--	------------------------	---

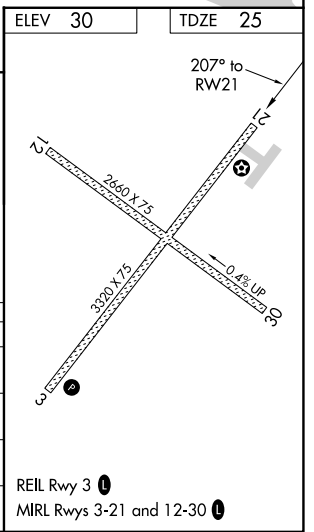
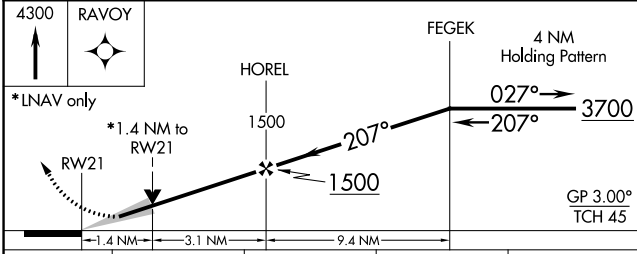
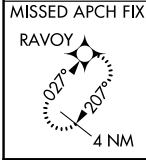
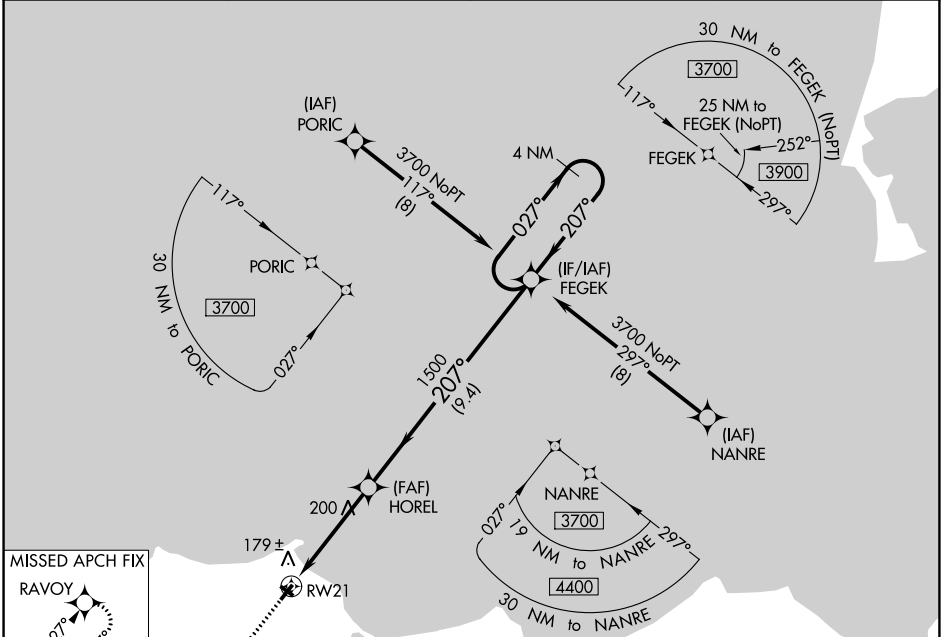
# RNAV (GPS) RWY 21

DEERING (DEE)(PADE)

**⚠** Circling to Rwy 12, 30 NA at night. For uncompensated Baro-VNAV systems, LNAV/VNAV NA below -19°C (-2°F) or above 54°C (130°F). DME/DME RNP-0.3 NA.

**⚠** MISSED APPROACH: Climb to 4300 direct RAVOY and hold, continue climb-in-hold to 4300.

ASOS <b>135.5</b>	ANCHORAGE CENTER <b>119.2 263.0</b>	KOTZEBUE RADIO <b>122.25</b>	CTAF <b>122.9</b>
----------------------	--	---------------------------------	----------------------



CATEGORY	A	B	C	D
LPV DA	275-1	250 (300-1)		NA
LNAV/VNAV DA	332-1	307 (400-1)		NA
LNAV MDA	500-1	475 (500-1)	500-1 <sup>3</sup> / <sub>8</sub> 475 (500-1 <sup>3</sup> / <sub>8</sub> )	NA
<b>C</b> CIRCLING	680-1 650 (700-1)	840-1 810 (900-1)	840-2 <sup>1</sup> / <sub>4</sub> 810 (900-2 <sup>1</sup> / <sub>4</sub> )	NA

AK, 25 JAN 2024 to 21 MAR 2024

AK, 25 JAN 2024 to 21 MAR 2024

WAAS CH <b>97341</b> <b>W03A</b>	APP CRS <b>027°</b>	Rwy Idg TDZE <b>25</b> Apt Elev <b>30</b>	<b>3320</b>
--	------------------------	---	-------------

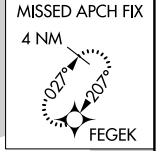
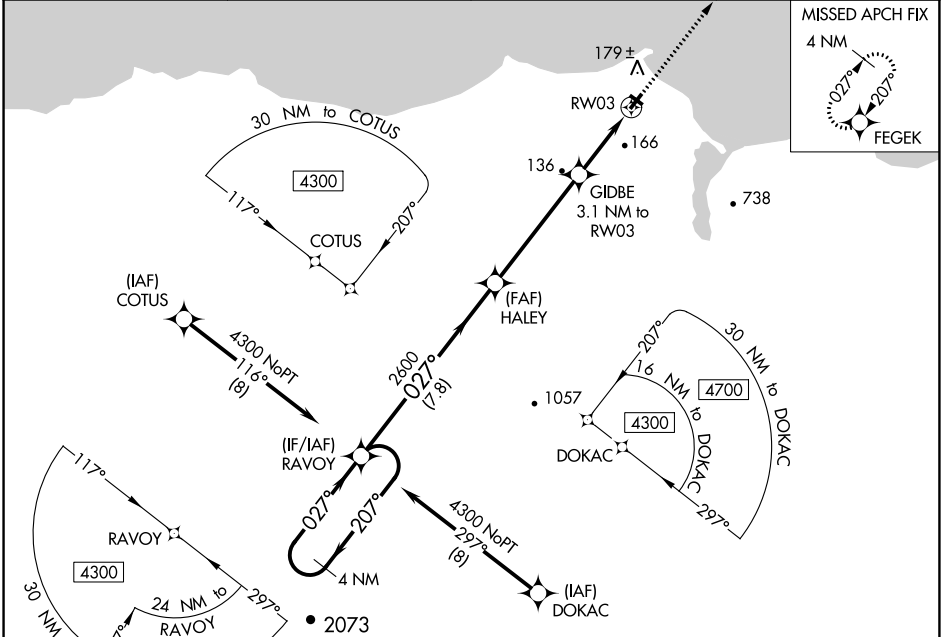
# RNAV (GPS) RWY 3

DEERING (DEE) (PADE)

**⚠** Circling to Rwy 12, 30 NA at night. For uncompensated Baro-VNAV systems, LNAV/VNAV NA below -19°C (-2°F) or above 54°C (130°F). MISSED APPROACH: Climb to 3700 direct FEGEK and hold, continue climb-in-hold to 3700.

**❄** -40°C DME/DME RNP-0.3 NA.

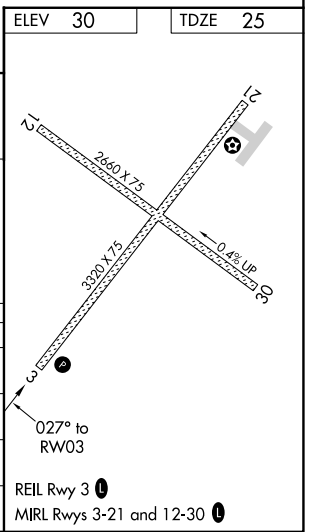
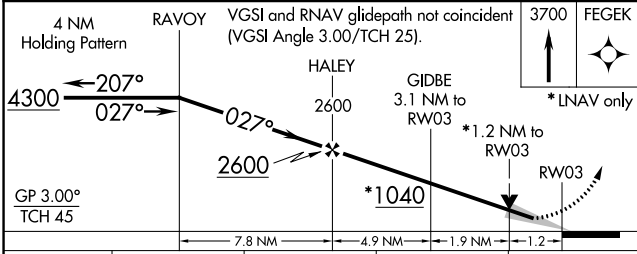
ASOS <b>135.5</b>	ANCHORAGE CENTER <b>119.2 263.0</b>	KOTZEBUE RADIO <b>122.25</b>	CTAF <b>122.9</b>
----------------------	--	---------------------------------	----------------------



AK, 25 JAN 2024 to 21 MAR 2024

AK, 25 JAN 2024 to 21 MAR 2024

ELEV <b>30</b>	TDZE <b>25</b>
----------------	----------------



CATEGORY	A	B	C	D
LPV DA	275-1	250 (300-1)		NA
LNAV/VNAV DA	275-1	250 (300-1)		NA
LNAV MDA	420-1	395 (400-1)	420-1½ 395 (400-1½)	NA
<b>C</b> CIRCLING	680-1 650 (700-1)	840-1 810 (900-1)	840-2¼ 810 (900-2¼)	NA

REIL Rwy 3 **⓪**  
MIRL Rwy 3-21 and 12-30 **⓪**

APP CRS	Rwy Idg	<b>2660</b>
<b>296°</b>	TDZE	<b>30</b>
	Apt Elev	<b>30</b>

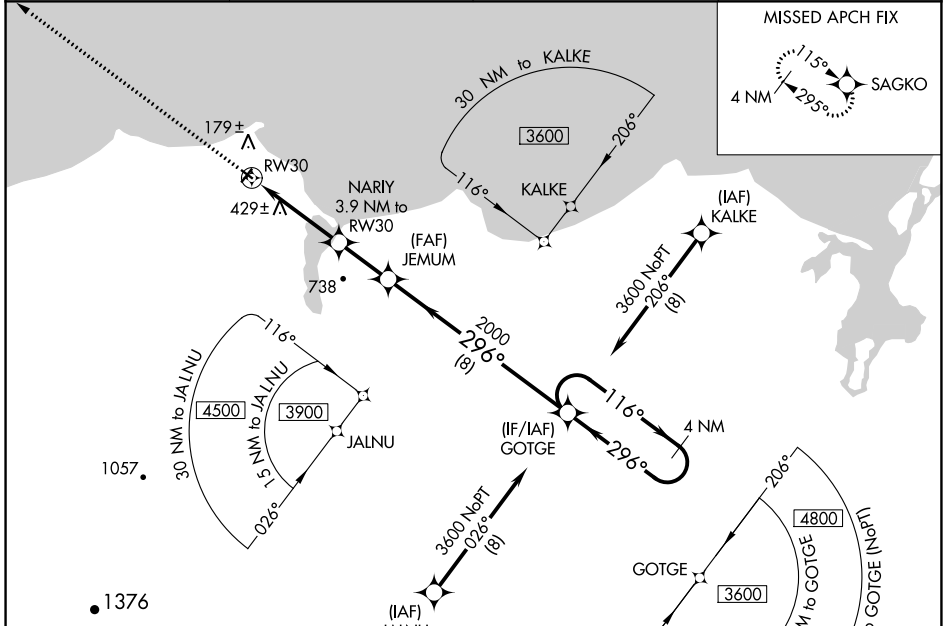
# RNAV (GPS) RWY 30

DEERING (DEE)(PADE)

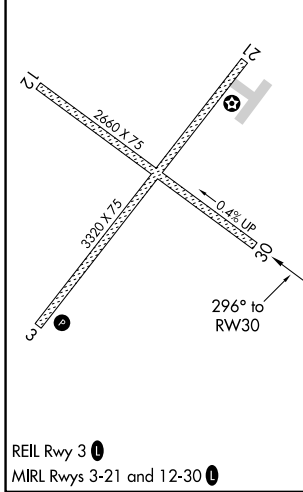
**⚠** DME/DME RNP-0.3 NA.  
**⚠** Rwy 30 helicopter visibility reduction below 1 SM NA.  
**⚠** -40°C Straight-in Rwy 12 NA at night, Circling Rwy 12, 30 NA at night.

MISSED APPROACH: Climb to 3000 direct SAGKO and hold.

ASOS <b>135.5</b>	ANCHORAGE CENTER <b>119.2 263.0</b>	KOTZEBUE RADIO <b>122.25</b>	CTAF <b>122.9</b>
----------------------	--	---------------------------------	----------------------



ELEV 30	TDZE 30
---------	---------



REIL Rwy 3 **1**  
 MIRL Rwy 3-21 and 12-30 **1**

	Visual Segment - Obstacles.			
	JEMUM	GOTGE	4 NM Holding Pattern	
	NARIY 3.9 NM to RW30			
	RW30			
	1300	2000		
	3.9 NM	2.2 NM	8 NM	
CATEGORY	A	B	C	D
LNAV MDA	740-1	710 (800-1)	740-2 710 (800-2)	NA
<b>C</b> CIRCLING	740-1 710 (800-1)	840-1 810 (900-1)	840-2¼ 810 (900-2¼)	NA

AK, 25 JAN 2024 to 21 MAR 2024

AK, 25 JAN 2024 to 21 MAR 2024