

(JALEX3.JALEX) 18312

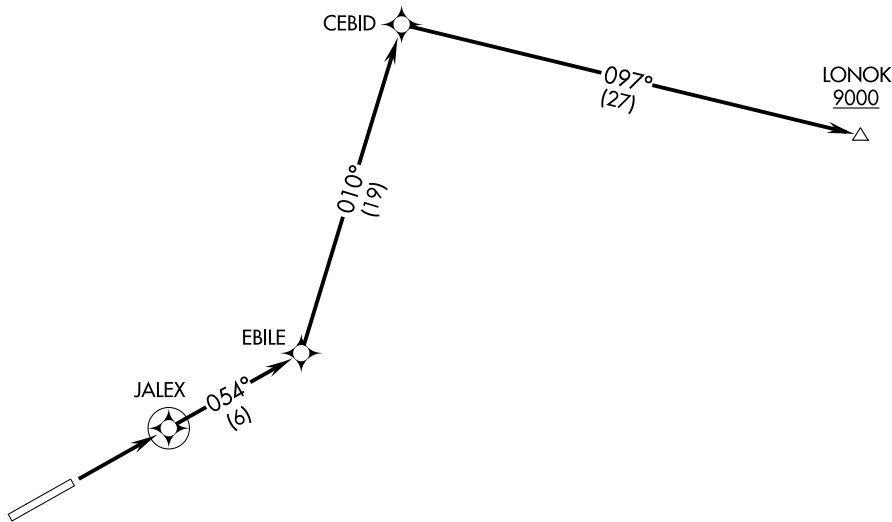
# JALEX THREE DEPARTURE (RNAV)

AL-1244 (FAA)

ADAK (ADK)(PADK)  
ADAK ISLAND, ALASKA

ANCHORAGE CENTER  
126.4 254.3  
CTAF  
122.9

**TOP ALTITUDE:  
ASSIGNED BY ATC**



AK, 25 JAN 2024 to 21 MAR 2024

AK, 25 JAN 2024 to 21 MAR 2024

NOTE: GPS required.  
NOTE: RNAV 1.

### TAKEOFF MINIMUMS

Rwy 23: NA-ATC.

Rwy 5: Standard with minimum climb of 253' per NM to 900.

NOTE: Chart not to scale.



### DEPARTURE ROUTE DESCRIPTION

**TAKEOFF RUNWAY 5:** Climb to 9000 or ATC assigned higher altitude direct JALEX then on track 054° to EBILE, then on track 010° to CEBID, then on track 097° to cross LONOK at or above 9000 before proceeding on course.

# JALEX THREE DEPARTURE (RNAV)

(JALEX3.JALEX) 08NOV18

ADAK ISLAND, ALASKA  
ADAK (ADK)(PADK)

(TTAUN4.TTAUN) 18312

# TTAUN FOUR DEPARTURE (RNAV)

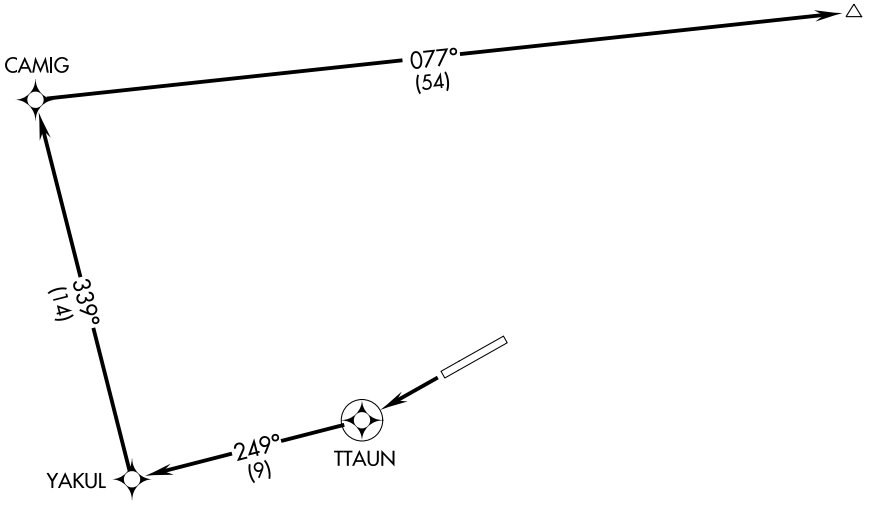
AL-1244 (FAA)

ADAK (ADK)(PADK)  
ADAK ISLAND, ALASKA

ANCHORAGE CENTER  
126.4 254.3  
CTAF  
122.9

**TOP ALTITUDE:  
ASSIGNED BY ATC**

LONOK  
9000



AK, 25 JAN 2024 to 21 MAR 2024

AK, 25 JAN 2024 to 21 MAR 2024

NOTE: GPS required.  
NOTE: RNAV 1.

### TAKEOFF MINIMUMS

Rwy 5: NA-ATC.

Rwy 23: 300-1 with minimum climb of 400' per NM to 1600.

NOTE: Chart not to scale.



### DEPARTURE ROUTE DESCRIPTION

TAKEOFF RUNWAY 23: Climb to 9000 or ATC assigned higher altitude direct TTAUN, then on track 249° to YAKUL, then track 339° to CAMIG, then on track 077° to LONOK before proceeding on course.

# TTAUN FOUR DEPARTURE (RNAV)

(TTAUN4.TTAUN) 08NOV18

ADAK ISLAND, ALASKA  
ADAK (ADK)(PADK)