

NDB/DME DUT <b>283</b>	APP CRS <b>171°</b>	Rwy Idg TDZE Apt Elev	N/A N/A <b>22</b>
Chan <b>86 (113.9)</b>			

# NDB-A

## UNALASKA (DUT) (PADU)

**⚠** Circling NA northeast of Rwy 13-31. Procedure NA at night. Helicopter visibility reduction below 1 SM NA. When local altimeter setting not received, use Akutan altimeter setting and increase all MDAs 100 feet. Descend to 6000 in holding pattern.

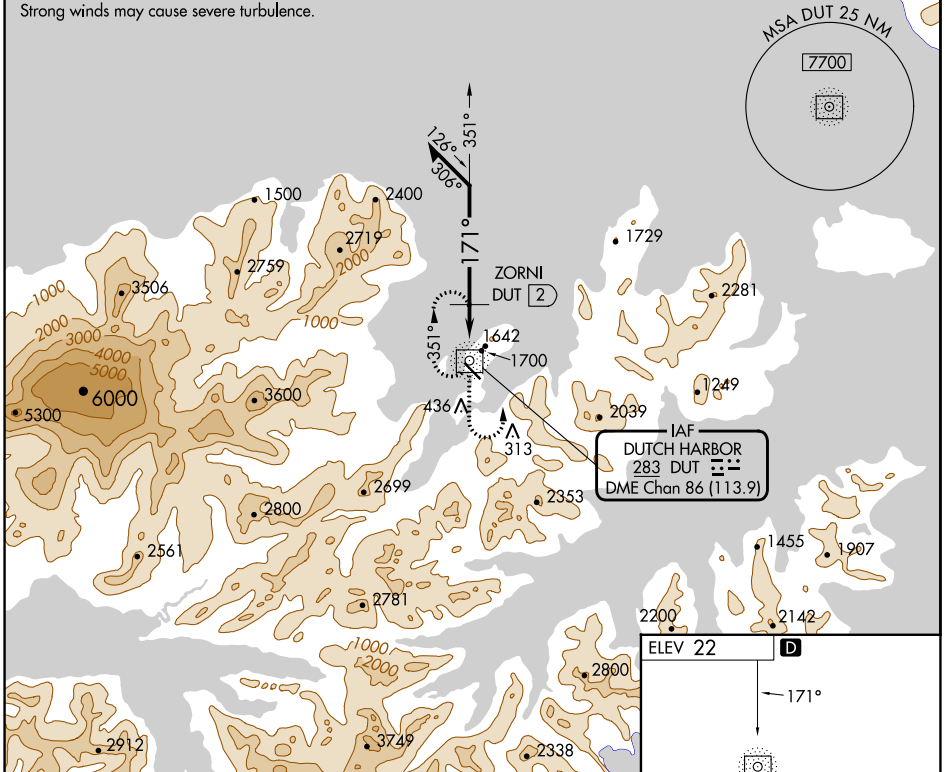
**MISSED APPROACH:** Climb to 3000 on DUT NDB/DME bearing 171° then climbing left turn to 4300 direct DUT NDB/DME and hold.

AWOS-3P  
**125.8**

ANCHORAGE CENTER  
**121.4**

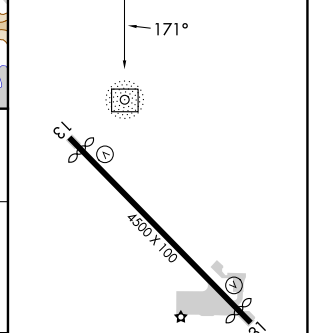
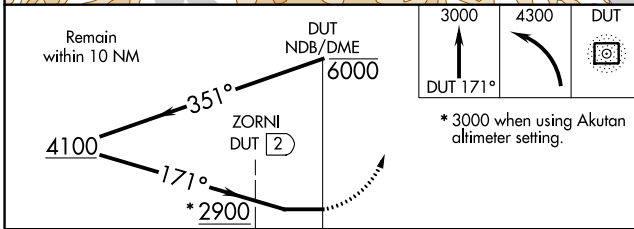
CTAF  
**122.6 0\***

Strong winds may cause severe turbulence.



IAF  
DUTCH HARBOR  
283 DUT  
DME Chan 86 (113.9)

ELEV 22 **D**



CATEGORY	A	B	C	D
<b>C</b> CIRCLING	2900-1¼ 2878 (2900-1¼)	2900-1½ 2878 (2900-1½)	2900-3	2878 (2900-3)
ZORNI FIX MINIMUMS (DME REQUIRED)				
<b>C</b> CIRCLING	2200-1¼ 2178 (2200-1¼)	2200-1½ 2178 (2200-1½)	2320-3 2298 (2300-3)	2500-3 2478 (2500-3)

MIRL Rwy 13-31 **0**  
REIL Rwys 13 and 31 **0**

AK, 25 JAN 2024 to 21 MAR 2024

AK, 25 JAN 2024 to 21 MAR 2024

APP CRS	Rwy Idg	N/A
164°	TDZE	N/A
	Apt Elev	22

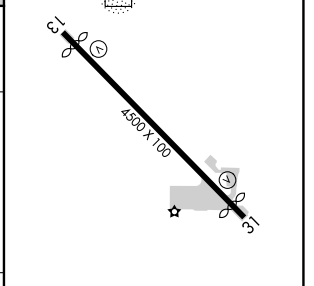
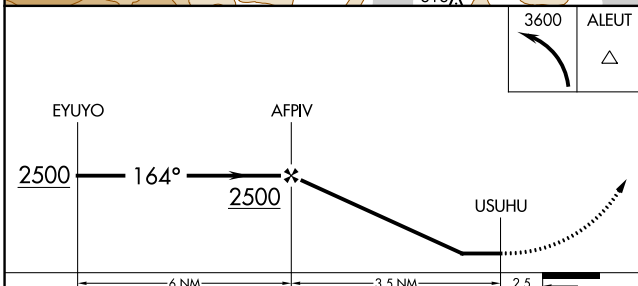
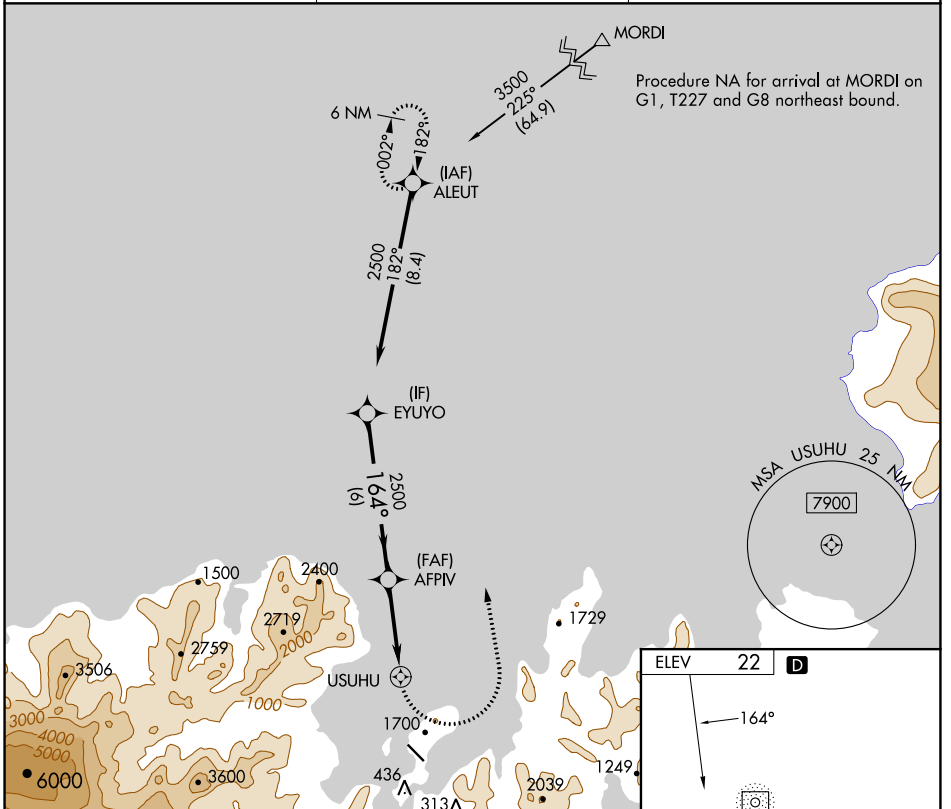
# RNAV (GPS)-B

UNALASKA (DUT) (PADU)

**⚠** Circling NA northeast of Rwy 13-31. DME/DME RNP-0.3 NA.  
**⚠** Procedure NA at night. When local altimeter setting not received, use Akutan altimeter setting and increase all MDAs 100 feet.

MISSED APPROACH: Climbing left turn to 3600 direct ALEUT and hold.

AWOS-3P <b>125.8</b>	ANCHORAGE CENTER <b>121.4</b>	CTAF <b>122.6 0 *</b>
-------------------------	----------------------------------	--------------------------



CATEGORY	A	B	C	D
<b>C</b> CIRCLING	2000-3	1978 (2000-3)	2320-3 2298 (2300-3)	2500-3 2478 (2500-3)

MIRL Rwy 13-31 **⓪**  
 REIL Rwys 13 and 31 **⓪**

AK, 25 JAN 2024 to 21 MAR 2024

AK, 25 JAN 2024 to 21 MAR 2024