

WAAS CH 86702 W16A	APP CRS 163°	Rwy ldg TDZE 16 Apt Elev 16
--	------------------------	---

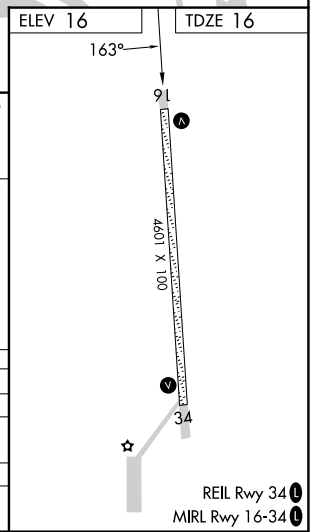
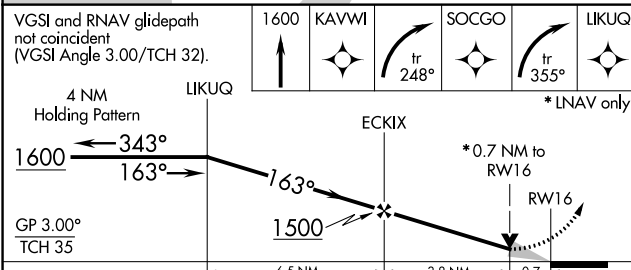
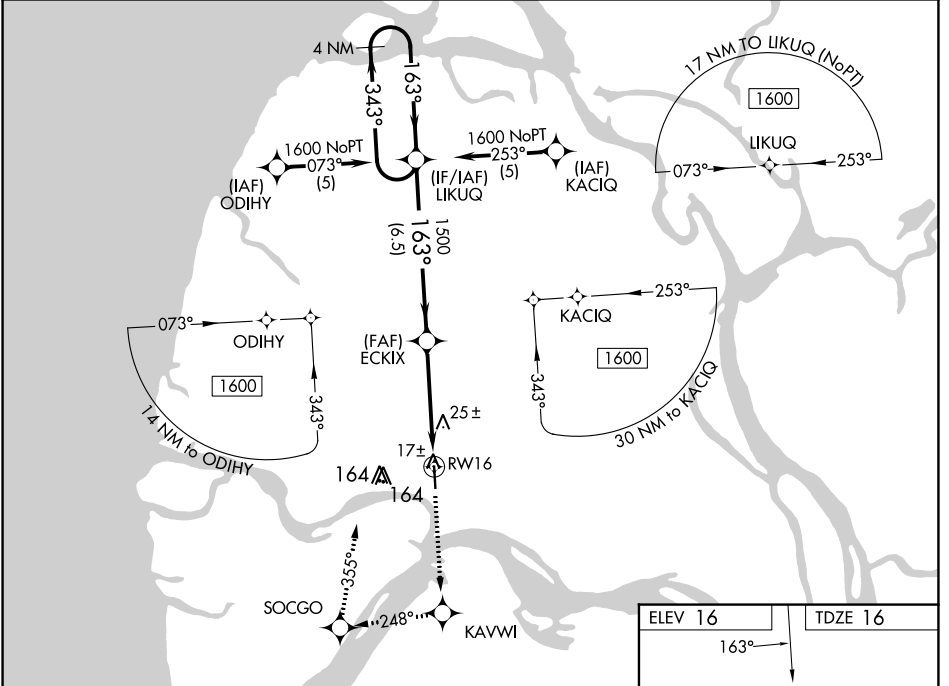
RNAV (GPS) RWY 16

EMMONAK (ENM) (PAEM)

⚠ If local altimeter setting not received, use St Mary's altimeter setting and increase all DAs 168 feet and all MDAs 180 feet. VDP NA with St Mary's altimeter setting. DME/DME RNP: 0.3 NA. Baro-VNAV NA when using St Mary's altimeter setting. For uncompensated Baro-VNAV systems, LNAV/VNAV NA below -25°C (-13°F) or above 48°C (119°F).

MISSED APPROACH: Climb to 1600 direct KAVWI and right turn via 248° track to SOCGO and right turn via 355° track to LIKUQ and hold.

AWOS-3P 135.35	ANCHORAGE CENTER 124.5	CTAF 122.9
--------------------------	----------------------------------	----------------------



CATEGORY	A	B	C	D
LPV DA		266-1	250 (300-1)	
LNAV/VNAV DA		280-1	264 (300-1)	
LNAV MDA		280-1	264 (300-1)	
CIRCLING	520-1	504 (600-1)	520-1½ 504 (600-1½)	580-2 564 (600-2)

AK, 25 JAN 2024 to 21 MAR 2024

AK, 25 JAN 2024 to 21 MAR 2024

WAAS CH 42502 W34A	APP CRS 343°	Rwy Idg TDZE 16 Apt Elev 16
--	------------------------	---

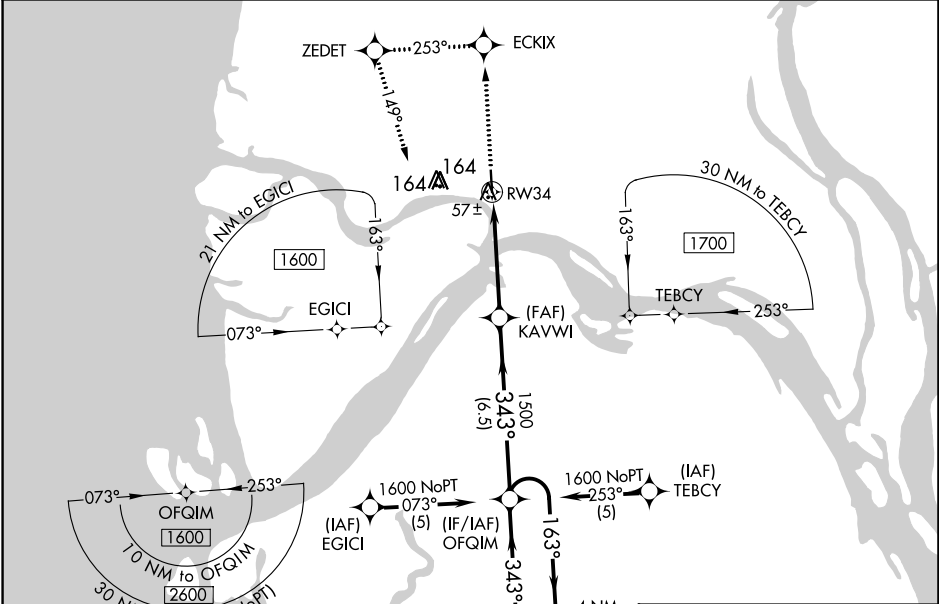
RNAV (GPS) RWY 34

EMMONAK (ENM) (PAEM)

⚠ If local altimeter setting not received, use St Mary's altimeter setting and increase all DAs 168 feet and MDAs 180 feet. VDP NA with St Mary's altimeter setting. DME/DME RNP- 0.3 NA. Baro-VNAV NA when using St Mary's altimeter setting. For uncompensated Baro-VNAV systems, LNAV/VNAV NA below -25°C (-13°F) or above 48°C (119°F).

MISSED APPROACH: Climb to 1600 direct ECKIX and left turn via 253° track to ZEDET and left turn via 149° track to OFQIM and hold.

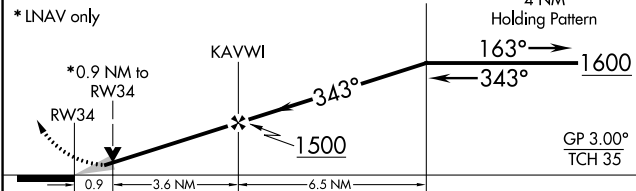
AWOS-3P 135.35	ANCHORAGE CENTER 124.5	CTAF 122.9
--------------------------	----------------------------------	----------------------



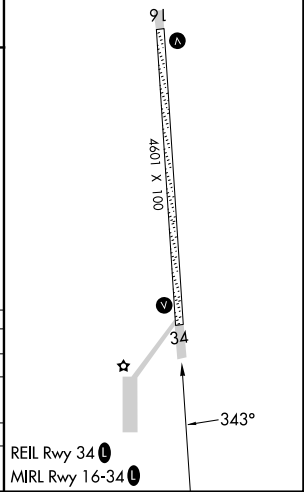
AK, 25 JAN 2024 to 21 MAR 2024

AK, 25 JAN 2024 to 21 MAR 2024

ELEV 16	TDZE 16
---------	---------



CATEGORY	A	B	C	D
LPV DA		266-1	250 (300-1)	
LNAV/VNAV DA		320-1	304 (400-1)	
LNAV MDA		320-1	304 (400-1)	
CIRCLING	520-1	504 (600-1)	520-1½ 504 (600-1½)	580-2 564 (600-2)



VOR/DME ENM 117.8 Chan 125	APP CRS 159°	Rwy Idg 4601 TDZE 16 Apt Elev 16
---	------------------------	---

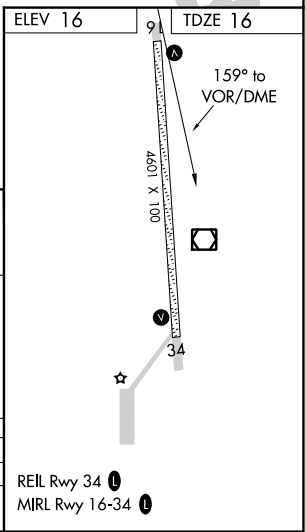
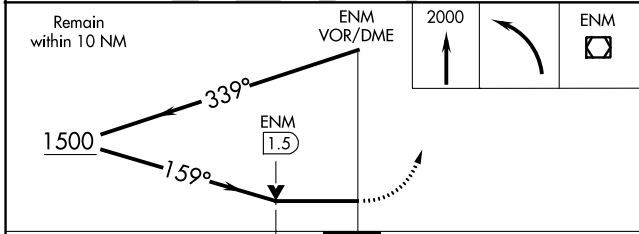
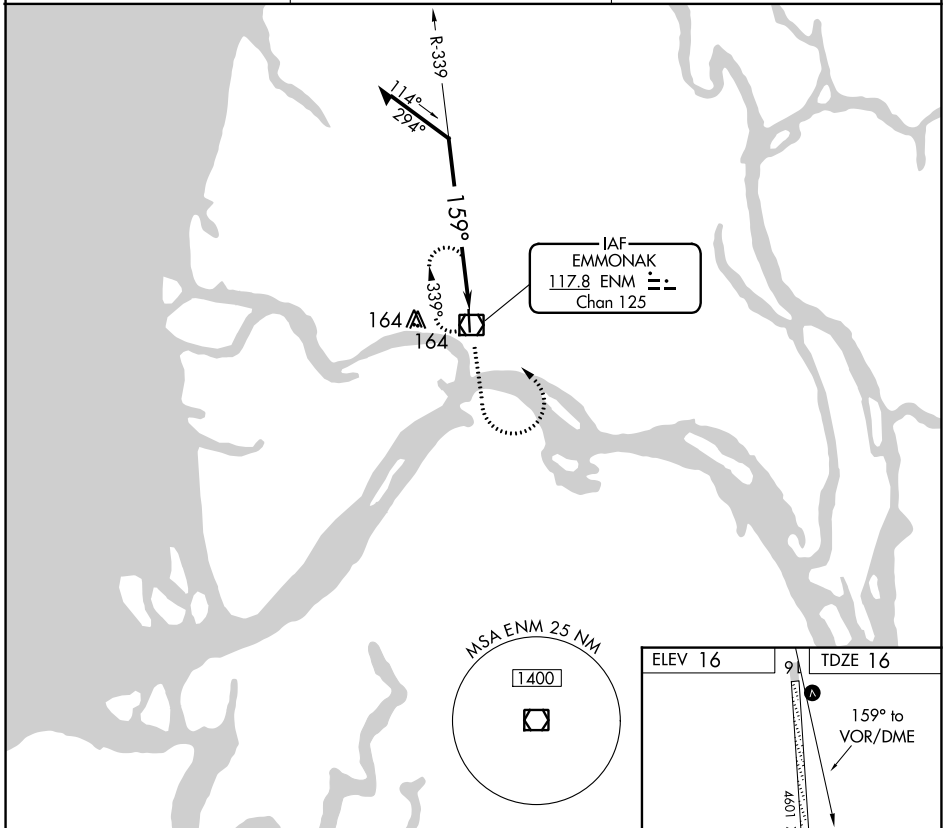
VOR RWY 16

EMMONAK (ENM) (PAEM)

⚠ If local altimeter setting not received, use St. Mary's altimeter setting and increase all MDAs 180 feet.
VDP not authorized with St. Mary's altimeter setting.

MISSED APPROACH: Climb to 2000 then left turn direct ENM VOR/DME and hold.

AWOS-3P 135.35	ANCHORAGE CENTER 124.5	CTAF 122.9
--------------------------	----------------------------------	----------------------



CATEGORY	A	B	C	D
S-16		340-1	324 (400-1)	
CIRCLING	520-1	504 (600-1)	520-1½ 504 (600-1½)	580-2 564 (600-2)

AK, 25 JAN 2024 to 21 MAR 2024

AK, 25 JAN 2024 to 21 MAR 2024