

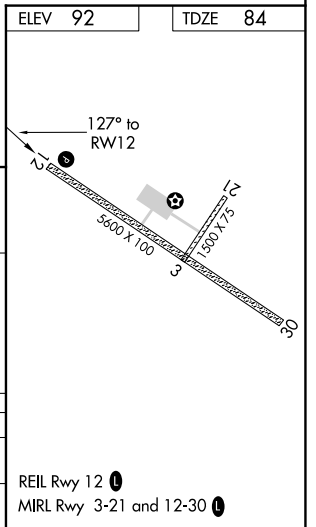
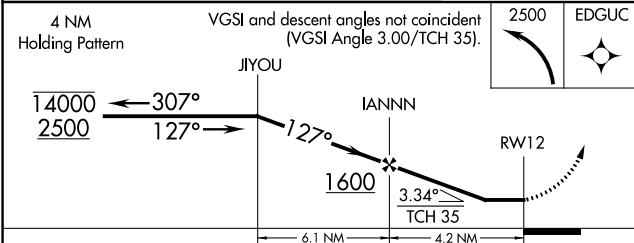
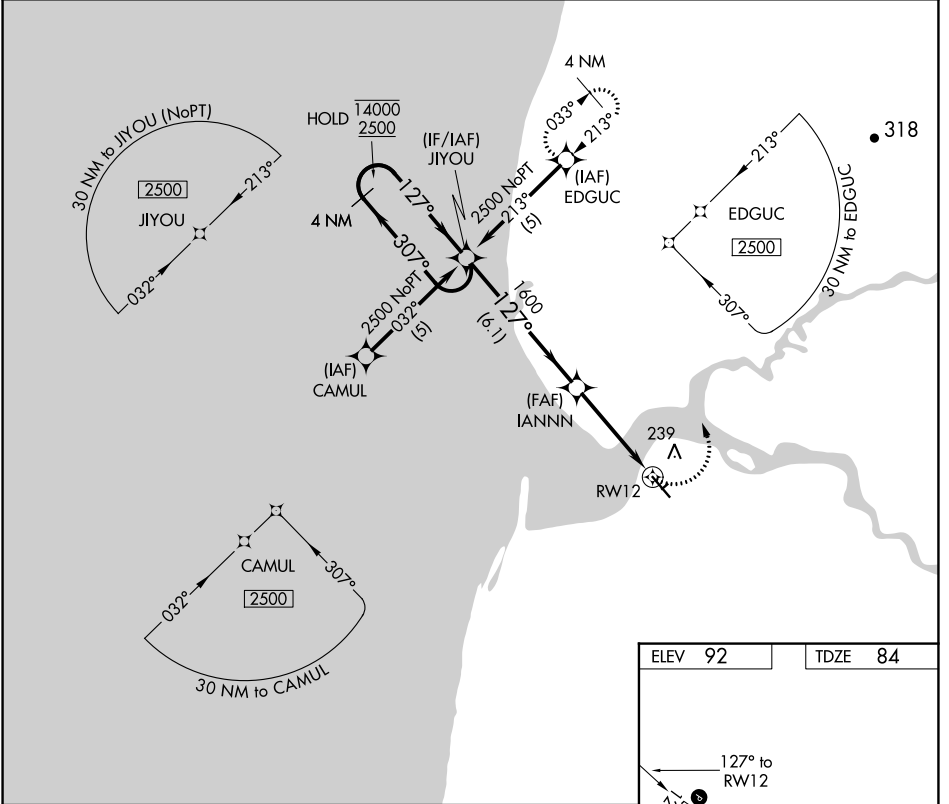
APP CRS <b>127°</b>	Rwy Idg <b>5600</b>
	TDZE <b>84</b>
	Apt Elev <b>92</b>

# RNAV (GPS) RWY 12

EGEGIK (EII) (PAII)

RNP APCH.	MISSED APPROACH: Climbing left turn to 2500 direct EDGUC and hold.
▼ Rwy 12 helicopter visibility reduction below 1 SM NA.	

AWOS-3P <b>135.65</b>	ANCHORAGE CENTER <b>124.8 354.0</b>	CTAF <b>122.8 0</b>
--------------------------	--	------------------------



CATEGORY	A	B	C	D
LNVA MDA	600-1	516 (600-1)	600-1 <sup>3</sup> / <sub>4</sub> 516 (600-1 <sup>3</sup> / <sub>4</sub> )	NA
CIRCLING	800-1	708 (800-1)	800-2 <sup>1</sup> / <sub>4</sub> 708 (800-2 <sup>1</sup> / <sub>4</sub> )	NA

REIL Rwy 12 0  
MIRL Rwy 3-21 and 12-30 0

AK, 25 JAN 2024 to 21 MAR 2024

AK, 25 JAN 2024 to 21 MAR 2024

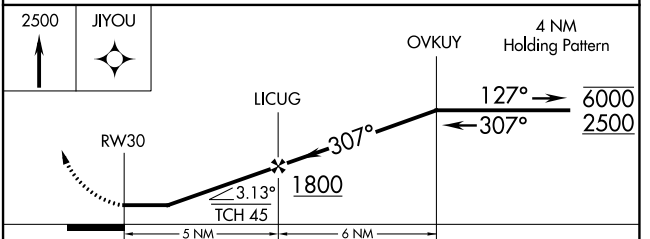
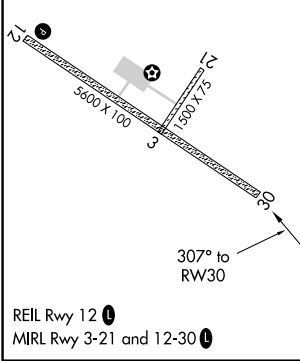
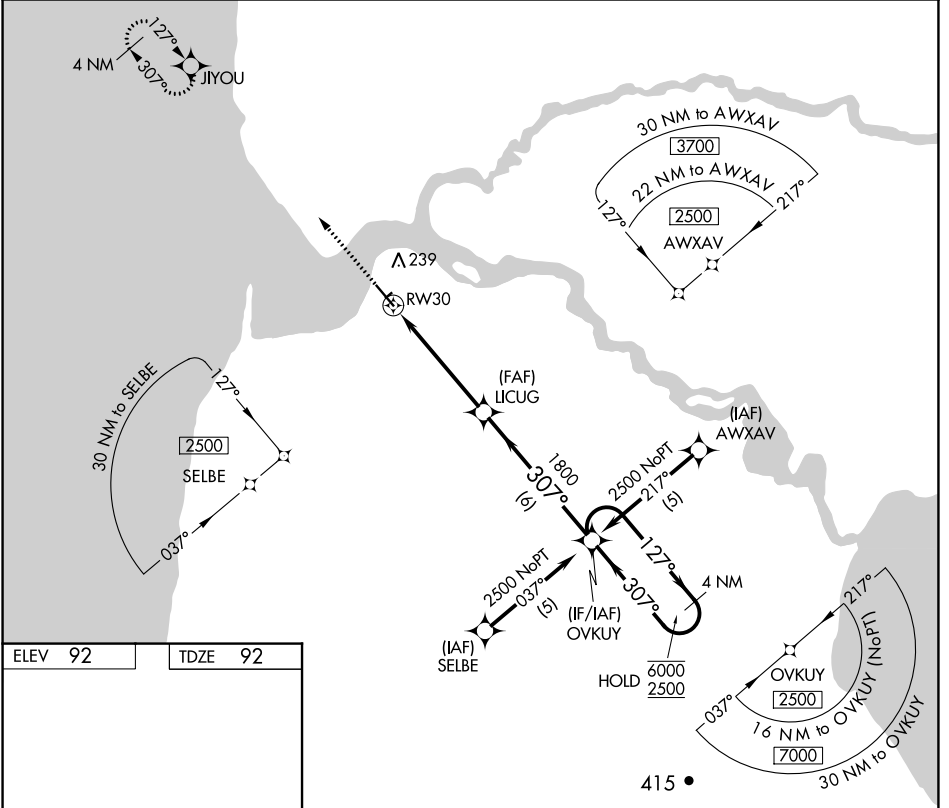
APP CRS	Rwy Idg	<b>5600</b>
<b>307°</b>	TDZE	<b>92</b>
	Apt Elev	<b>92</b>

# RNAV (GPS) RWY 30

EGEGIK (EII) (PAII)

RNP APCH.	MISSED APPROACH: Climb to 2500 direct JIYOU and hold.
▼ Rwy 30 helicopter visibility reduction below 1 SM NA.	

AWOS-3P <b>135.65</b>	ANCHORAGE CENTER <b>124.8 354.0</b>	CTAF <b>122.8</b>
--------------------------	--	----------------------



CATEGORY	A	B	C	D
LNAV MDA	700-1	608 (700-1)	700-1¾ 608 (700-1¾)	NA
CIRCLING	800-1	708 (800-1)	800-2¼ 708 (800-2¼)	NA

AK, 25 JAN 2024 to 21 MAR 2024

AK, 25 JAN 2024 to 21 MAR 2024