

APP CRS <b>017°</b>	Rwy Idg <b>4500</b>
	TDZE <b>2087</b>
	Apt Elev <b>2092</b>

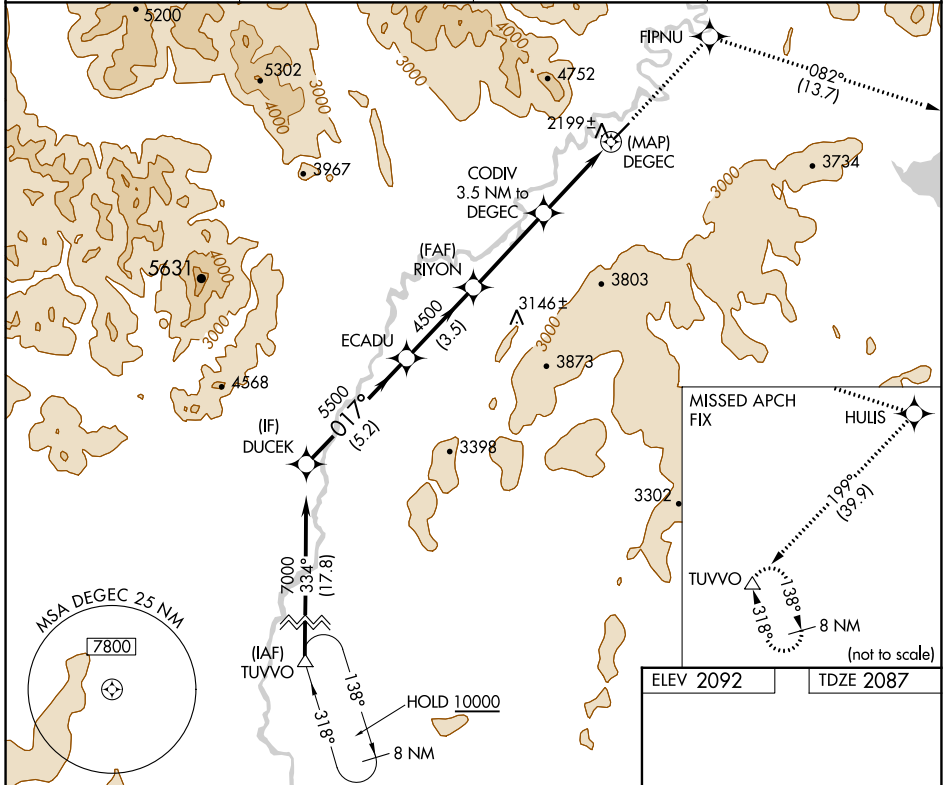
# RNAV (GPS) RWY 2

ARCTIC VILLAGE (ARC)(PARC)

**▽** **33** -38°C  
DME/DME RNP-0.3 NA.  
If local altimeter setting not received, procedure NA.

MISSED APPROACH: Climb to 10000 direct FIPNU and via 082° track to HULIS and right turn via 199° track to TUVVO and hold.

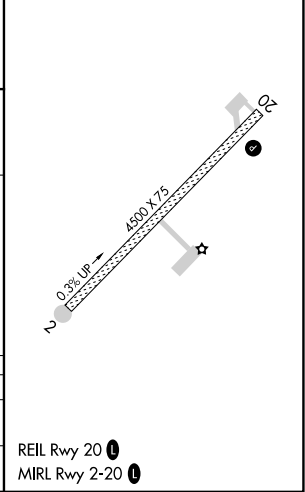
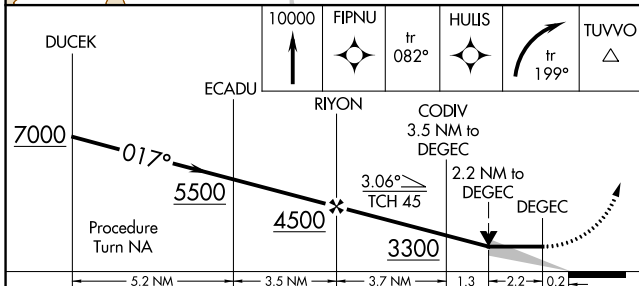
AWOS-3P <b>135.75</b>	ANCHORAGE CENTER <b>135.0 225.4</b>	FAIRBANKS RADIO <b>122.05</b>	CTAF <b>122.9</b>
--------------------------	----------------------------------------	----------------------------------	----------------------



AK, 25 JAN 2024 to 21 MAR 2024

AK, 25 JAN 2024 to 21 MAR 2024

ELEV 2092	TDZE 2087
-----------	-----------



CATEGORY	A	B	C	D
LNVA MDA	2880-1 793 (800-1)	2880-1¼ 793 (800-1¼)		NA
CIRCLING	2880-1 788 (800-1)	2900-1¼ 808 (900-1¼)		NA

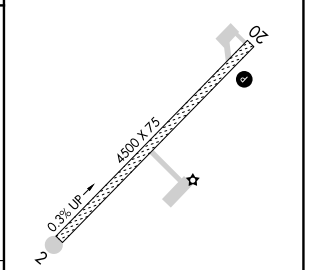
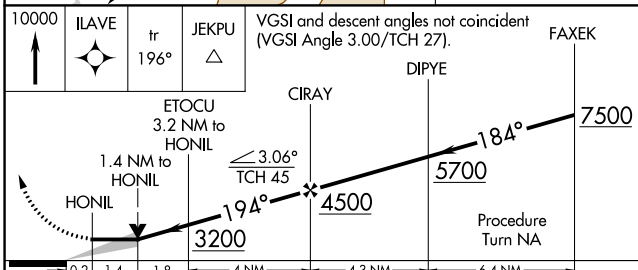
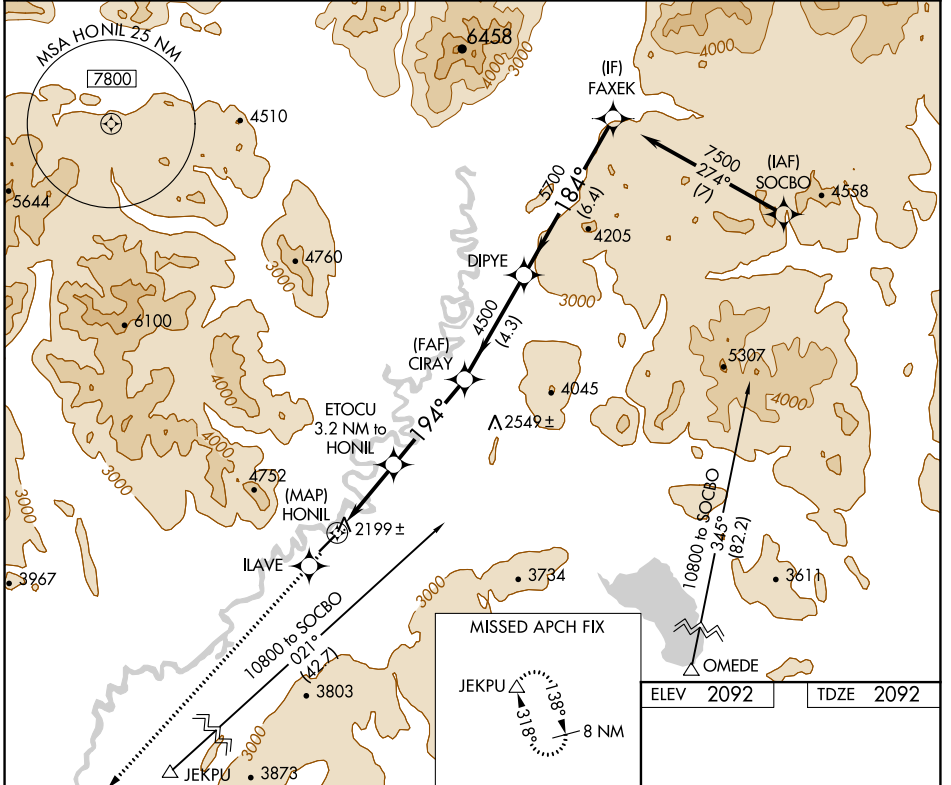
APP CRS <b>194°</b>	Rwy Idg <b>4500</b>
	TDZE <b>2092</b>
	Apt Elev <b>2092</b>

# RNAV (GPS) RWY 20

ARCTIC VILLAGE (ARC)(PARC)

-38°C	DME/DME RNP-0.3 NA. If local altimeter setting not received, procedure NA.	MISSED APPROACH: Climb to 10000 direct ILAVE and via 196° track to JEKPU and hold, continue climb-in-hold to 10000.
-------	-------------------------------------------------------------------------------	---------------------------------------------------------------------------------------------------------------------------

AWOS-3P <b>135.75</b>	ANCHORAGE CENTER <b>135.0 225.4</b>	FAIRBANKS RADIO <b>122.05</b>	CTAF <b>122.9</b>
--------------------------	----------------------------------------	----------------------------------	----------------------



CATEGORY	A	B	C	D
LNVA MDA	2600-1	508 (600-1)		NA
CIRCLING	2700-1 608 (700-1)	2900-1 808 (900-1)		NA

ELEV	2092	TDZE	2092
REIL Rwy 20		MIRL Rwy 2-20	

AK, 25 JAN 2024 to 21 MAR 2024

AK, 25 JAN 2024 to 21 MAR 2024