

NDB/DME HBT <b>390</b>	APP CRS <b>126°</b>	Rwy Idg TDZE Apt Elev	<b>4099</b> <b>23</b> <b>24</b>
Chan <b>79 (113.2)</b>			

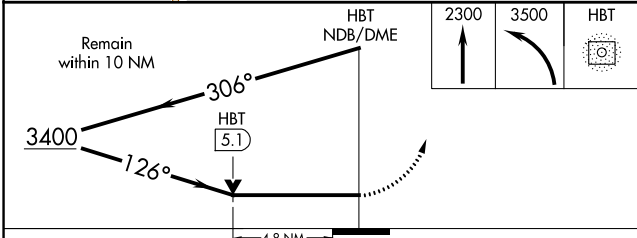
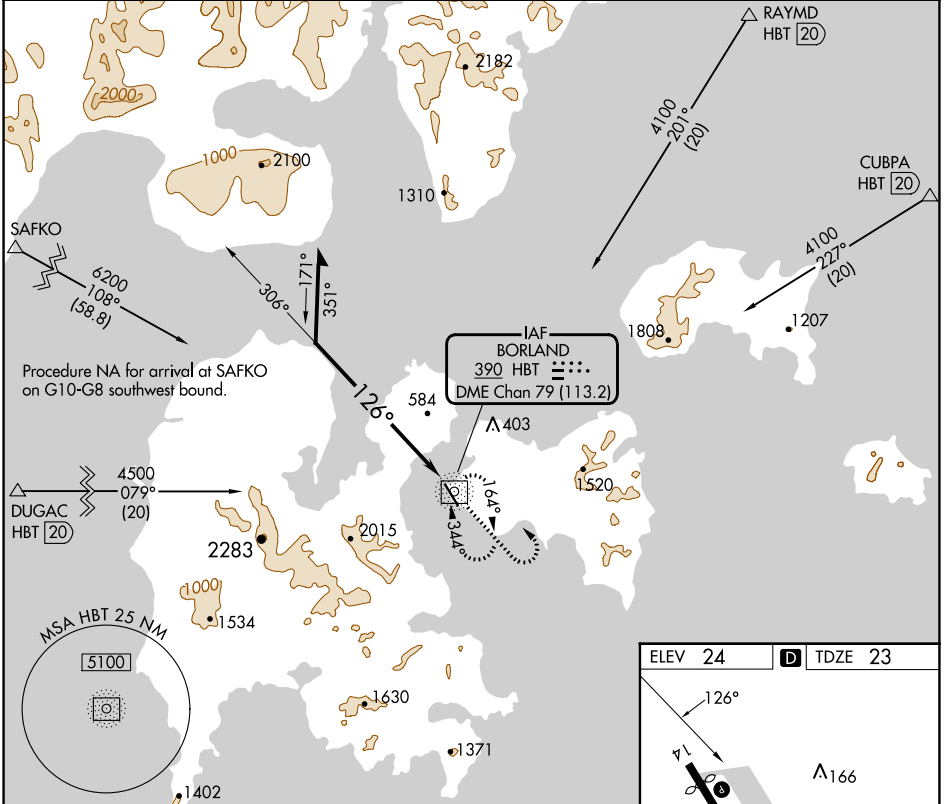
# NDB RWY 14

SAND POINT (SDP) (PASD)

**⚠** Circling NA northeast of Rwy 14-32.  
**⚠** Helicopter visibility reduction below  $\frac{3}{4}$  SM NA.

MISSED APPROACH: Climb to 2300 then climbing left turn to 3500 direct HBT NDB and hold, continue climb-in-hold to 3500.

AWOS-3P <b>134.85</b>	ANCHORAGE CENTER <b>125.35 346.3</b>	COLD BAY RADIO <b>122.3</b>	CLNC DEL <b>122.3 (CTAF) 0</b>	UNICOM <b>122.8</b>
--------------------------	---	--------------------------------	-----------------------------------	------------------------



ELEV 24	<b>D</b> TDZE 23
---------	------------------

MIRL Rwy 14-32 **0**  
 REIL Rws 14 and 32 **0**

CATEGORY	A	B	C	D
S-14	1900-1¼ 1877 (1900-1¼)	1900-1½ 1877 (1900-1½)	1900-3	1877 (1900-3)
<b>C</b> CIRCLING	1900-1¼ 1876 (1900-1¼)	1900-1½ 1876 (1900-1½)	1900-3 1876 (1900-3)	2200-3 2176 (2200-3)

AK, 25 JAN 2024 to 21 MAR 2024

AK, 25 JAN 2024 to 21 MAR 2024

NDB/DME HBT <b>390</b>	APP CRS <b>339°</b>	Rwy ldg TDZE Apt Elev	<b>4099</b> <b>24</b> <b>24</b>
Chan <b>79 (113.2)</b>			

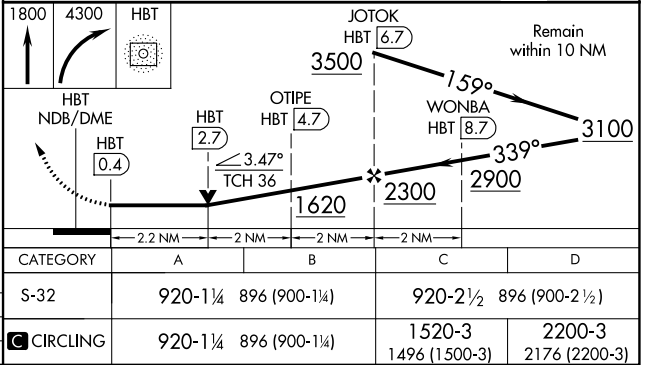
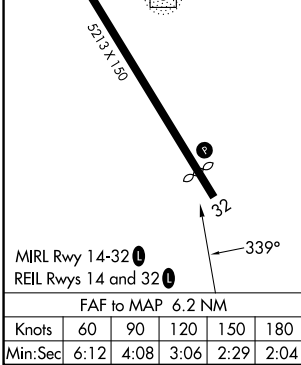
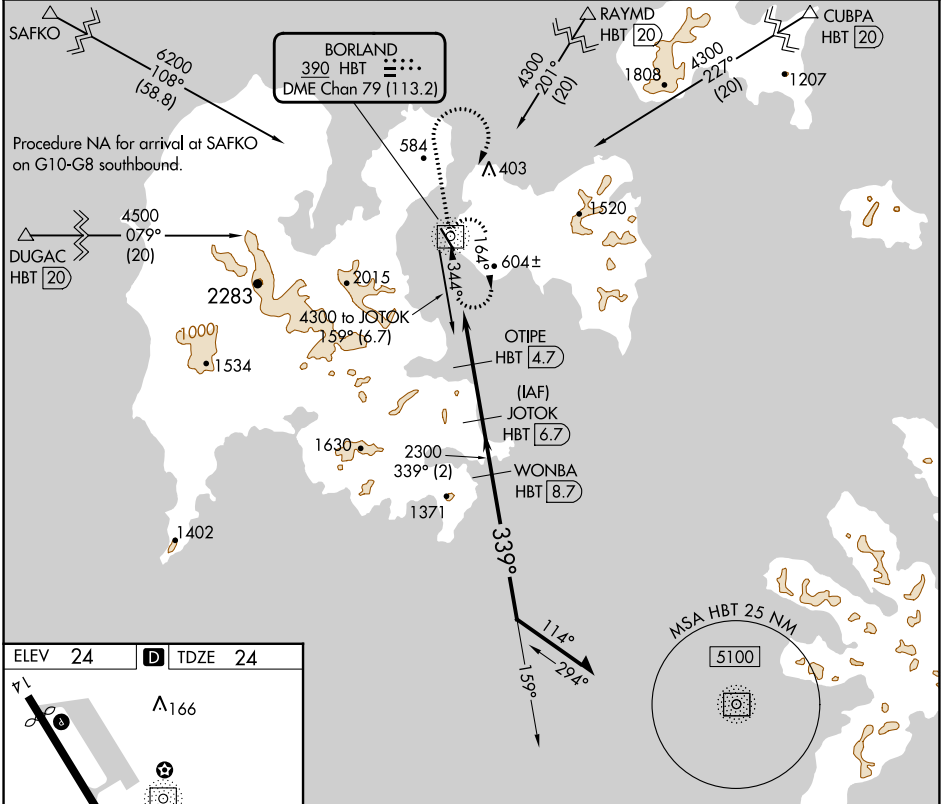
# NDB RWY 32

SAND POINT (SDP) (PASD)

**⚠** Circling NA northeast of Rwy 14-32. DME required.

**⚠** MISSED APPROACH: Climb to 1800 then climbing right turn to 4300 direct HBT NDB and hold, continue climb-in-hold to 4300.

AWOS-3P <b>134.85</b>	ANCHORAGE CENTER <b>125.35 346.3</b>	COLD BAY RADIO <b>122.3</b>	CLNC DEL <b>122.3 (CTAF) 0</b>	UNICOM <b>122.8</b>
--------------------------	---	--------------------------------	-----------------------------------	------------------------



AK, 25 JAN 2024 to 21 MAR 2024

AK, 25 JAN 2024 to 21 MAR 2024

WAAS CH <b>78241</b> W <b>32A</b>	APP CRS <b>318°</b>	Rwy Idg TDZE <b>24</b> Apt Elev <b>24</b>	<b>4099</b>
---	------------------------	---	-------------

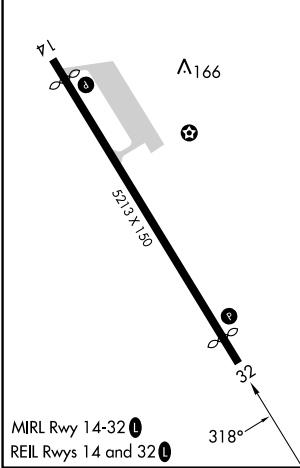
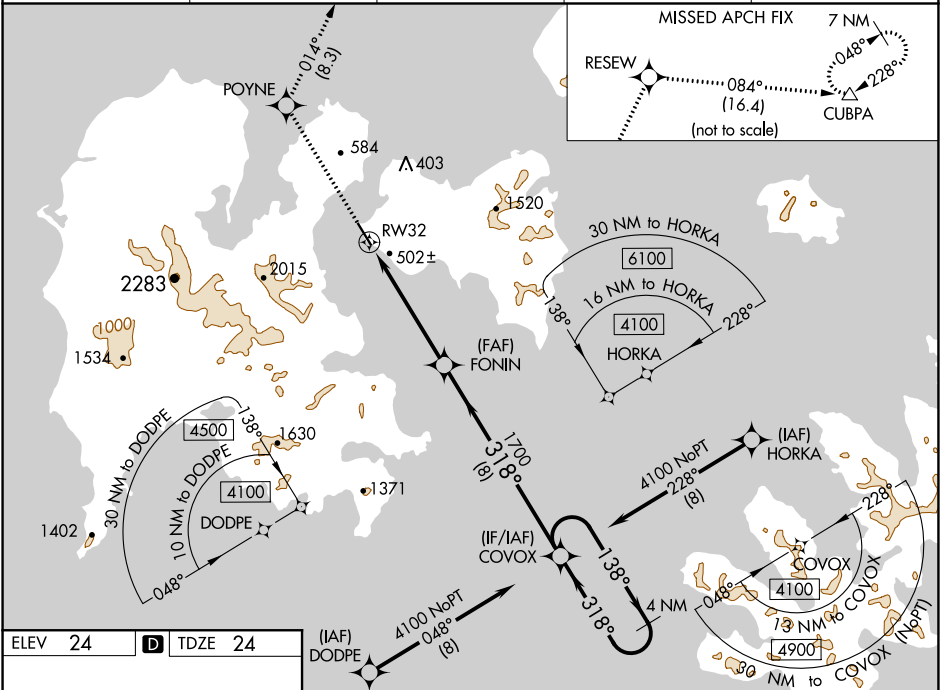
# RNAV (GPS) RWY 32

SAND POINT (SDP) (PASD)

**⚠** For uncompensated Baro-VNAV systems, LNAV/VNAV NA below -20°C (-4°F) or above 54°C (130°F). When local altimeter setting not received, procedure NA. Circling NA northeast of Rwy 14-32. DME/DME RNP-0.3 NA.

**MISSED APPROACH:** Climb to 7000 direct POYNE and on track 014° to RESEW and on track 084° to CUBPA and hold, continue climb-in-hold to 7000.

AWOS-3P <b>134.85</b>	ANCHORAGE CENTER <b>125.35 346.3</b>	COLD BAY RADIO <b>122.3</b>	CLNC DEL <b>122.3 (CTAF) 0</b>	UNICOM <b>122.8</b>
--------------------------	---	--------------------------------	-----------------------------------	------------------------



ELEV 24	<b>D</b> TDZE 24	(IAF) DODPE	(IAF) COVOX	(IF/IAF) COVOX	(FAF) FONIN	RW32	RESEW tr 014°	CUBPA tr 084°	7000 POYNE	VGSi and RNAV glidepath not coincident (VGSi Angle 3.60/TCH 36) COVOX 4 NM Holding Pattern GP 3.00° TCH 36
		4100 NoPT 048° (8)	4100 NoPT 048° (8)	1700 318° (8)	1700 318° (8)	1700 318° (8)	1700 318° (8)	4100 138° (8)	4100 318° (8)	
		30 NM to DODPE	10 NM to DODPE	30 NM to HORKA	1.6 NM to HORKA	4 NM to COVOX	1.8 NM to RW32	3.4 NM	8 NM	

CATEGORY	A	B	C	D
LPV DA		566-1½	542 (600-1½)	
LNAV/VNAV DA		859-2½	835 (900-2½)	
LNAV MDA	760-1	736 (800-1)	760-2 736 (800-2)	
<b>C</b> CIRCLING	760-1	736 (800-1)	1520-3 1496 (1500-3)	NA

AK, 25 JAN 2024 to 21 MAR 2024

AK, 25 JAN 2024 to 21 MAR 2024

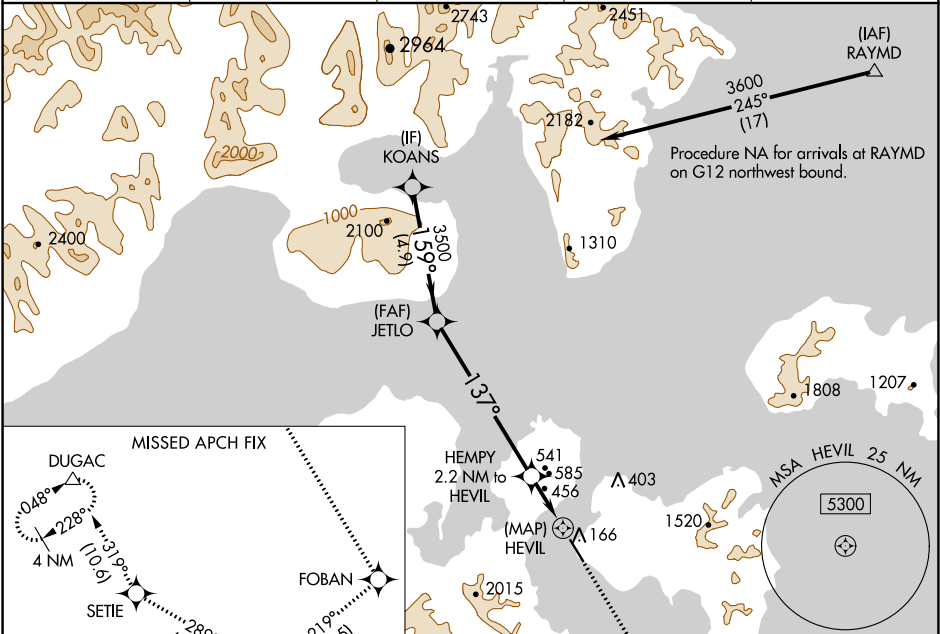
WAAS CH <b>86844</b> W <b>14B</b>	APP CRS <b>137°</b>	Rwy Idg TDZE Apt Elev	<b>4099</b> <b>23</b> <b>24</b>
---	------------------------	-----------------------------	---------------------------------------

# RNAV (GPS) Y RWY 14

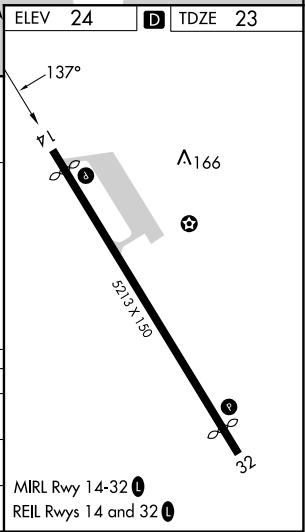
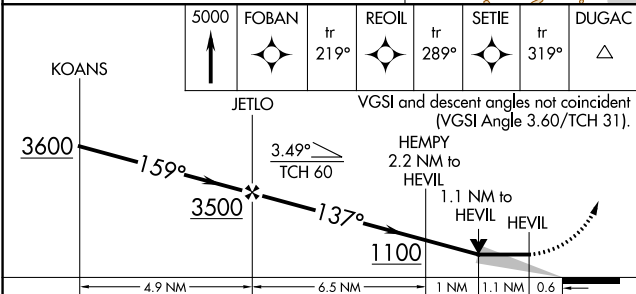
SAND POINT (SDP) (PASD)

RNP APCH-GPS.		MISSED APPROACH: Climb to 5000 on the RNAV missed approach route to DUGAC and hold.	
Circling NA northeast of Rwy 14-32.			

AWOS-3P <b>134.85</b>	ANCHORAGE CENTER <b>125.35 346.3</b>	COLD BAY RADIO <b>122.3</b>	CLNC DEL <b>122.3 (CTAF) 0</b>	UNICOM <b>122.8</b>
--------------------------	---	--------------------------------	-----------------------------------	------------------------



ELEV 24	TDZE 23
---------	---------



CATEGORY	A	B	C	D
LP MDA	720-1	697 (700-1)	720-2	697 (700-2)
LNAV MDA	840-1 817 (900-1)	840-1¼ 817 (900-1¼)	840-2½	817 (900-2½)
CIRCLING	840-1¼	816 (900-1¼)	1580-3 1556 (1600-3)	2240-3 2216 (2300-3)

AK, 25 JAN 2024 to 21 MAR 2024

AK, 25 JAN 2024 to 21 MAR 2024

SAND POINT, ALASKA

AL-6537 (FAA)

24025

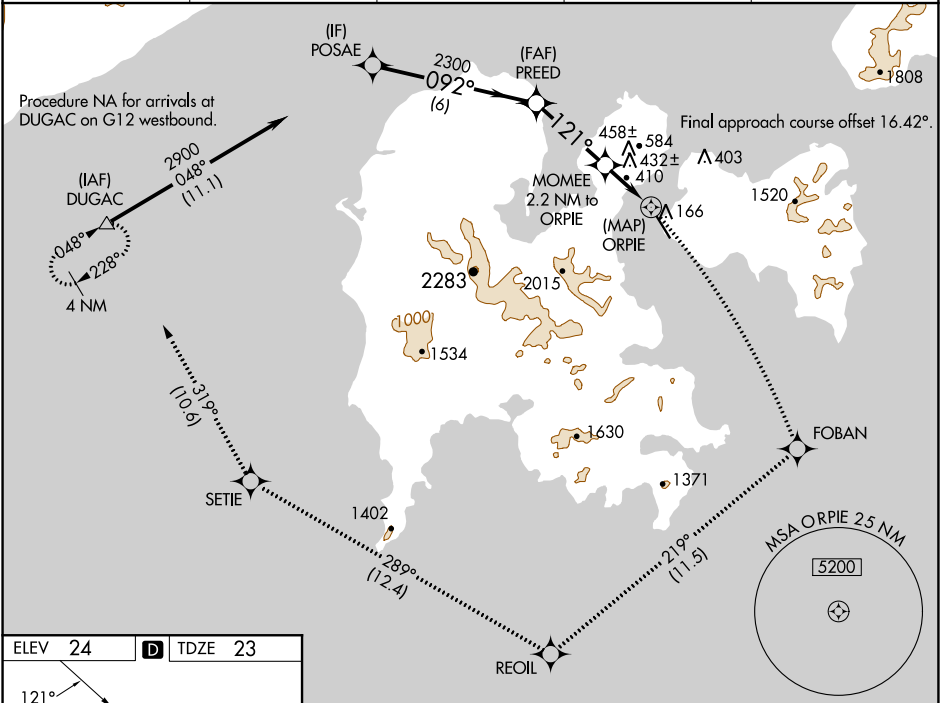
WAAS CH <b>56245</b> <b>W14A</b>	APP CRS <b>121°</b>	Rwy Idg TDZE Apt Elev	<b>4099</b> <b>23</b> <b>24</b>
--	------------------------	-----------------------------	---------------------------------------

# RNAV (GPS) Z RWY 14

SAND POINT (SDP) (PASD)

RNP APCH-GPS.	MISSED APPROACH: Climbing right turn to 5000 on the RNAV missed approach route to DUGAC and hold.
Circling NA northeast of Rwy 14-32.	

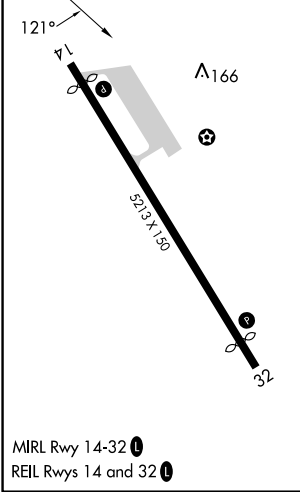
AWOS-3P <b>134.85</b>	ANCHORAGE CENTER <b>125.35 346.3</b>	COLD BAY RADIO <b>122.3</b>	CLNC DEL <b>122.3 (CTAF) 0</b>	UNICOM <b>122.8</b>
--------------------------	---	--------------------------------	-----------------------------------	------------------------



AK, 25 JAN 2024 to 21 MAR 2024

AK, 25 JAN 2024 to 21 MAR 2024

ELEV <b>24</b>	<b>D</b>	TDZE <b>23</b>
----------------	----------	----------------



MIRL Rwy 14-32   
REIL Rws 14 and 32

5000	FOBAN	tr 219°	REOIL	tr 289°	SETIE	tr 319°	DUGAC
VGS1 and descent angles not coincident (VGS1 Angle 3.60/TCH 31).							
2900	092°	2300	121°	1080			
6 NM		3.3 NM		1.1 NM	1.1 NM	0.5 NM	
CATEGORY	A	B	C	D			
LP MDA	660-1	637 (700-1)	660-1¾	637 (700-1¾)			
LNAV MDA	820-1	820-1¼	820-2½	797 (800-2½)			
CIRCLING	820-1	820-1¼	1580-3	2240-3			
	796 (800-1)	796 (800-1¼)	1556 (1600-3)	2216 (2300-3)			

SAND POINT, ALASKA  
Amdt 2 02DEC21

55°19'N-160°31'W

# RNAV (GPS) Z RWY 14