

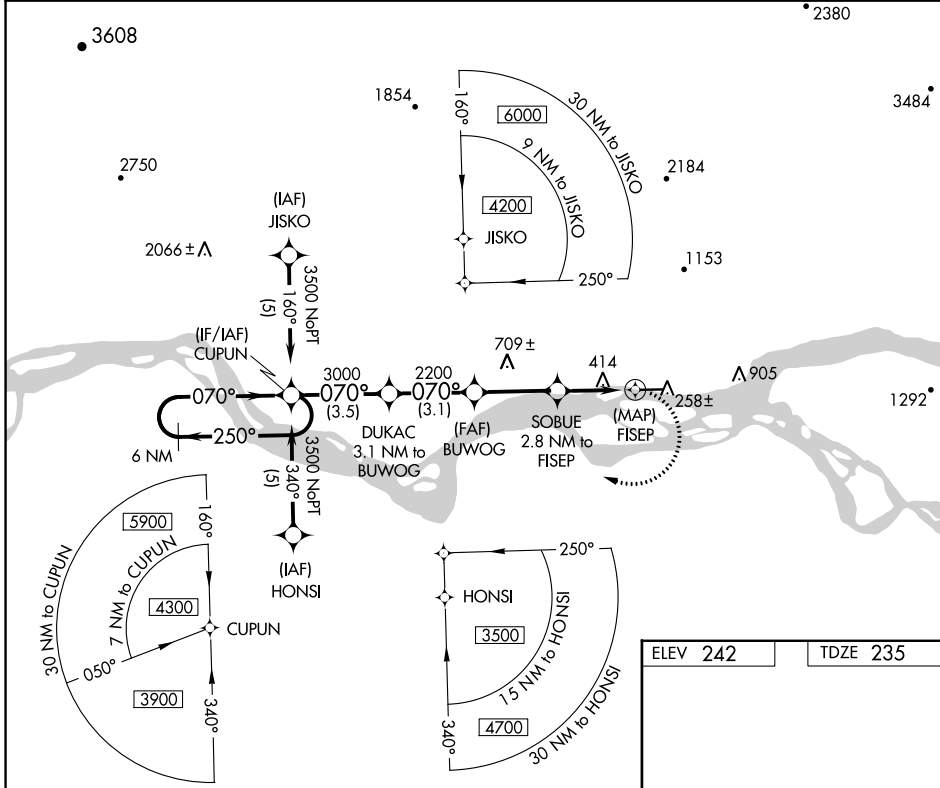
APP CRS	Rwy Idg	4400
070°	TDZE	235
	Apt Elev	242

RNAV (GPS) RWY 7

RALPH M CALHOUN MEML (TAL) (PATA)

RNP APCH-GPS.		MISSED APPROACH: Climbing right turn to 3500 direct CUPUN and hold.	
<p>▼ Circling NA north of Rwy 7-25. ▲ Rwy 7 helicopter visibility reduction below ¾ SM NA.</p>			

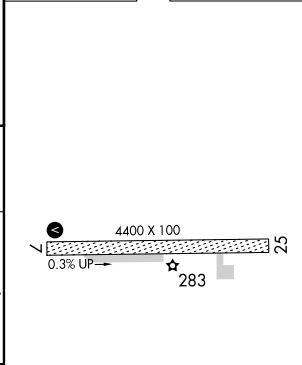
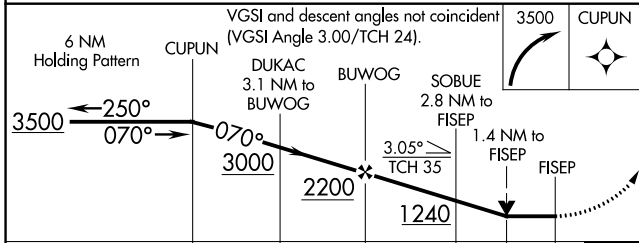
ASOS 135.1	ANCHORAGE CENTER 120.9 285.4	FAIRBANKS RADIO 122.65	CTAF 122.90
----------------------	--	----------------------------------	-----------------------



AK, 25 JAN 2024 to 21 MAR 2024

AK, 25 JAN 2024 to 21 MAR 2024

ELEV 242	TDZE 235
----------	----------



CATEGORY	A	B	C	D
LNVA MDA	760-1 525 (600-1)		760-1½ 525 (600-1½)	
CIRCLING	760-1 518 (600-1)		1260-3 1018 (1100-3)	

MIRL Rwy 7-25

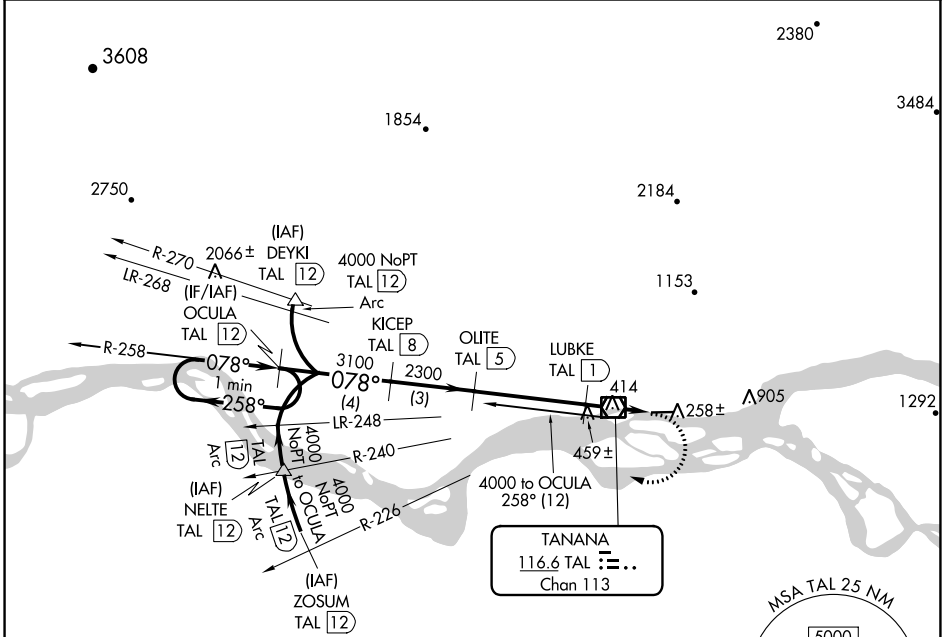
VOR/DME TAL 116.6 Chan 113	APP CRS 078°	Rwy Idg TDZE Apt Elev	4400 235 242
--	------------------------	-----------------------------	---

VOR/DME RWY 7
RALPH M CALHOUN MEML (TAL) (PATA)

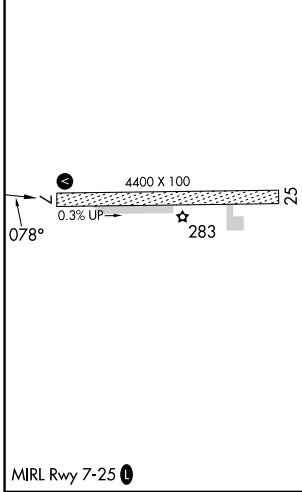
⚠ Circling NA north of Rwy 7-25.
Rwy 7 helicopter visibility reduction below 3/4 SM NA.

MISSED APPROACH: Climbing right turn to 4000 via heading 275° and TAL VOR/DME R-258 to OCULA 12 DME and hold, continue climb-in-hold to 4000.

ASOS 135.1	ANCHORAGE CENTER 120.9 285.4	FAIRBANKS RADIO 122.65	CTAF 122.9
----------------------	--	----------------------------------	----------------------



ELEV 242	TDZE 235
----------	----------



VGSI and descent angles not coincident (VGSI Angle 3.00/TCH 24).

Category	A	B	C	D
S-7	720-1	485 (500-1)	720-1 3/8	485 (500-1 3/8)
CIRCLING	740-1 498 (500-1)	760-1 518 (600-1)	1260-3	1018 (1100-3)

AK, 25 JAN 2024 to 21 MAR 2024

AK, 25 JAN 2024 to 21 MAR 2024