

WAAS CH <b>86540</b> <b>W27A</b>	APP CRS <b>274°</b>	Rwy Ldg TDZE <b>1463</b> Apt Elev <b>1470</b>
--	------------------------	---

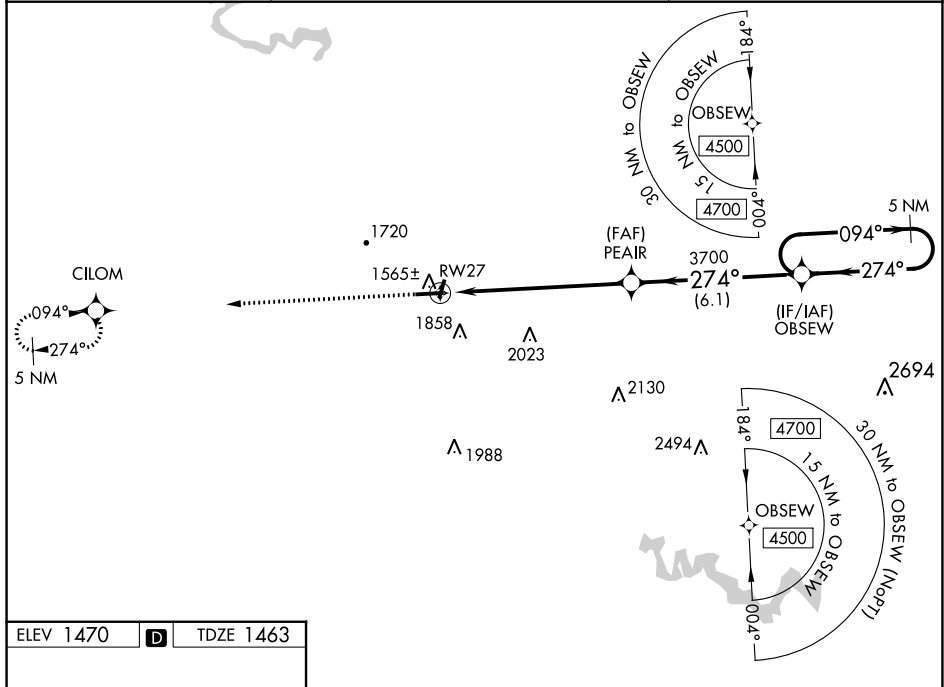
# RNAV (GPS) RWY 27

PIKE COUNTY/HATCHER FLD (P.B.X)

**⚠** For uncompensated Baro-VNAV systems, LNAV/VNAV NA below -17°C (0°F) or above 54°C (130°F). DME/DME RNP-0.3 NA. Circling NA to Rwys 2 and 20.

MISSED APPROACH: Climb to 4500 direct CILOM and hold.

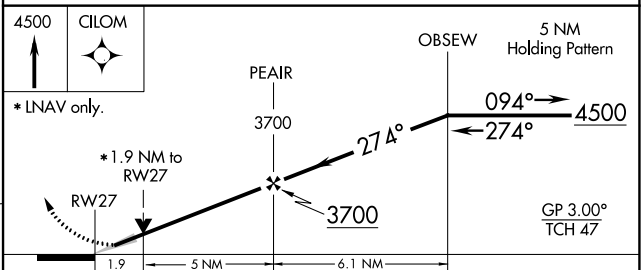
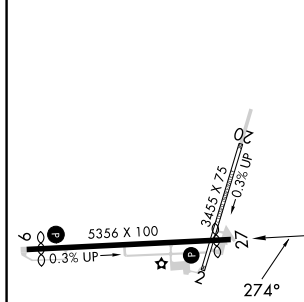
AWOS-3PT <b>121.225</b>	INDIANAPOLIS CENTER <b>126.575 257.85</b>	UNICOM <b>122.8 (CTAF) 0</b>
----------------------------	--	---------------------------------



SE-1, 22 FEB 2024 to 21 MAR 2024

SE-1, 22 FEB 2024 to 21 MAR 2024

ELEV 1470	<b>D</b>	TDZE 1463
-----------	----------	-----------



CATEGORY	A	B	C	D
LPV DA	1663-1 200 (200-1)			
LNAV/VNAV DA	2175-2 1/2 712 (800-2 1/2)			
LNAV MDA	2120-1	657 (700-1)	2120-1 3/4	657 (700-1 3/4)
<b>C</b> CIRCLING	2120-1 650 (700-1)	2160-1 690 (700-1)	2160-2 690 (700-2)	2460-3 990 (1000-3)