

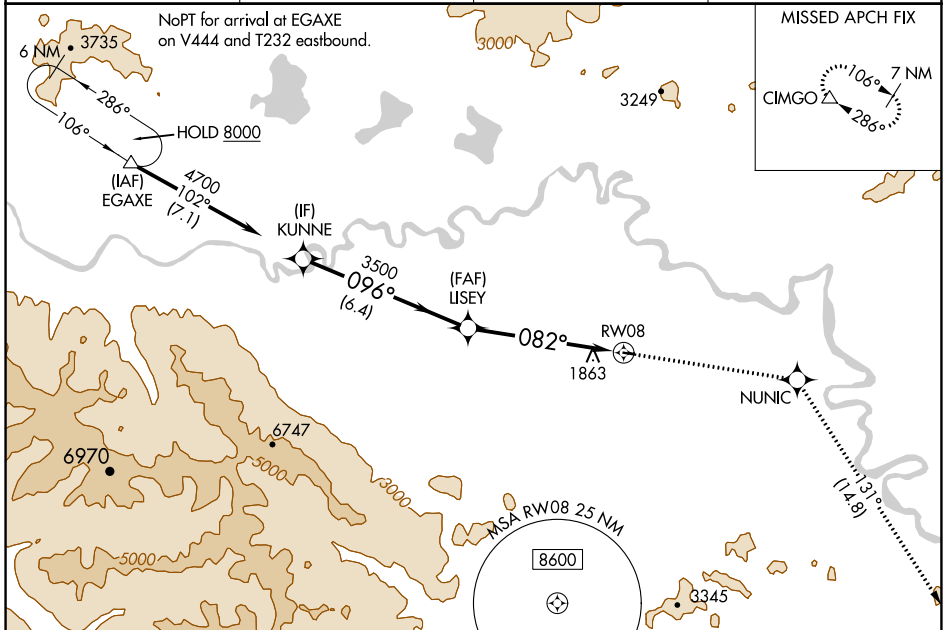
WAAS CH 77546 W08A	APP CRS 082°	Rwy Idg TDZE Apt Elev	2509 1643 1643
--	------------------------	-----------------------------	---

RNAV (GPS) RWY 8

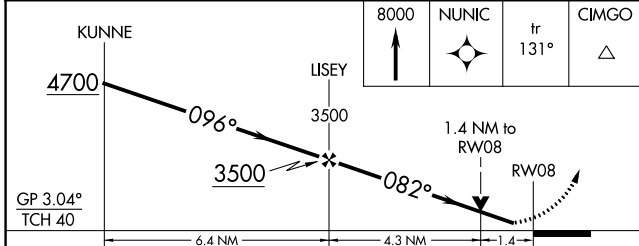
TOK JUNCTION (6K8) (PFTO)

RNP APCH - GPS.	MISSED APPROACH: Climb to 8000 direct NUNIC and on track 131° to CIMGO and hold, continue climb-in-hold to 8000.
<p>V Rwy 8 helicopter visibility reduction below 3/4 SM NA. For uncompensated Baro-VNAV systems, LNAV/VNAV NA below -25°C or above 54°C.</p>	

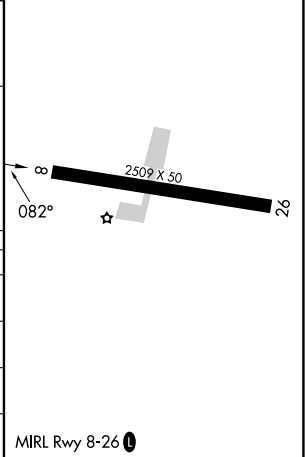
AWOS-3PT 118.1	ANCHORAGE CENTER 126.55 323.0	NORTHWAY RADIO 122.4	UNICOM 122.8 (CTAF)
--------------------------	---	--------------------------------	-------------------------------



ELEV 1643	TDZE 1643
-----------	-----------



CATEGORY	A	B	C	D
LPV DA	1895-1 252 (300-1)			NA
LNAV/VNAV DA	2120-1 3/8 477 (500-1 3/8)			NA
LNAV MDA	2120-1 477 (500-1)		2120-1 3/8 477 (500-1 3/8)	NA
C CIRCLING	2180-1 537 (600-1)		2180-1 1/2 537 (600-1 1/2)	NA



AK, 25 JAN 2024 to 21 MAR 2024

AK, 25 JAN 2024 to 21 MAR 2024

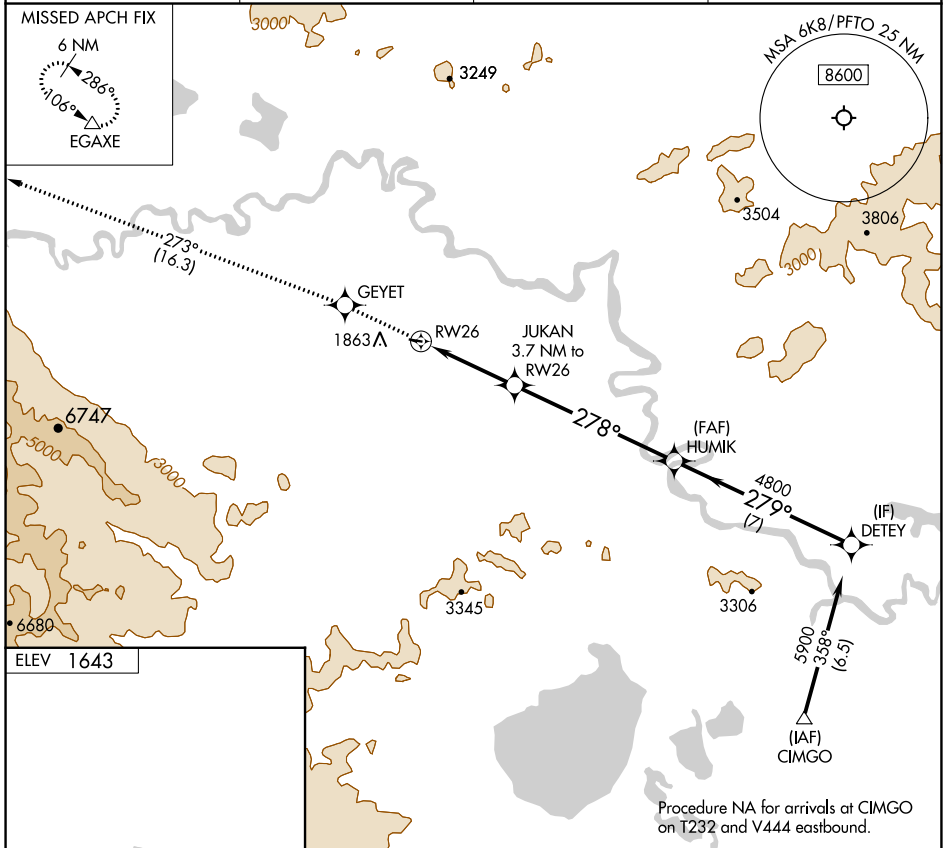
APP CRS 278°	Rwy Idg TDZE Apt Elev	N/A N/A 1643
------------------------	-----------------------------	---

RNAV (GPS)-A

TOK JUNCTION (6K8) (PFTO)

RNP APCH - GPS.	MISSED APPROACH: Climb to 8000 direct GEYET and on track 273° to EGAXE and hold, do not exceed 230K when continuing climb-in-hold to 8000.
-----------------	--

AWOS-3PT 118.1	ANCHORAGE CENTER 126.55 323.0	NORTHWAY RADIO 122.4	UNICOM 122.8 (CTAF)
--------------------------	---	--------------------------------	-------------------------------



8000	GEYET	tr 273°	EGAXE	DETEY
HUMIK JUKAN 3.7 NM to RW26 4800 278° 279° 2820 5900				
RW26		6.3 NM		7 NM
3.7 NM				
CATEGORY	A	B	C	D
CIRCLING	2180-1	537 (600-1)	NA	

AK, 25 JAN 2024 to 21 MAR 2024

AK, 25 JAN 2024 to 21 MAR 2024