

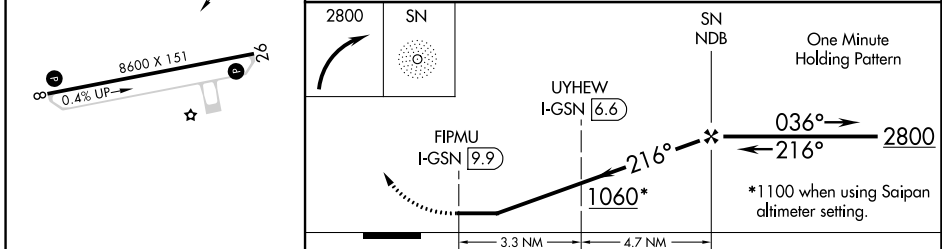
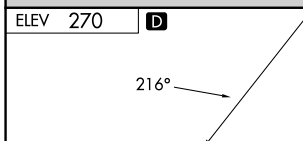
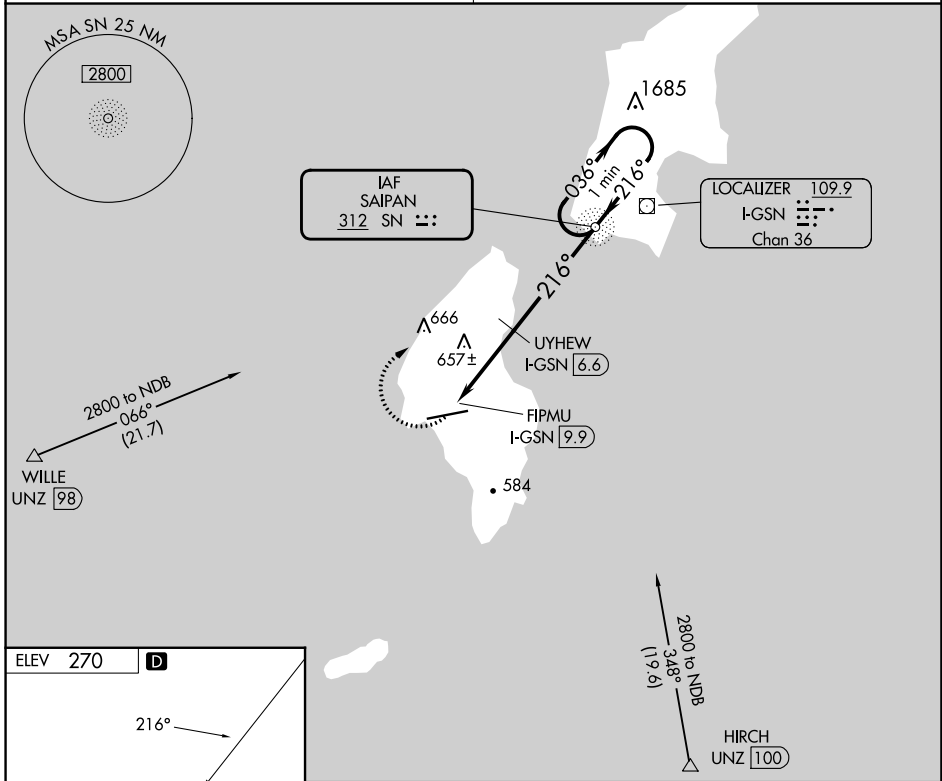
SN NDB 312	APP CRS 216°	Rwy Idg TDZE Apt Elev	N/A N/A 270
----------------------	------------------------	-----------------------------	--

FRANCISCO MANGLONA BORJA/TINIAN INTL (TNI)(PGWT) **NDB-A**

NA Obtain local altimeter setting on CTAF; when not received, use Saipan altimeter setting and increase all MDA 40 feet, and all Cats visibility ¼ SM. Increase UYHEW fix minimums Cats C and D visibility ¼ mile. # DME from I-GSN LOC/DME.

MISSED APPROACH: Climbing right turn to 2800 direct SN NDB and hold.

GUAM CERAP 118.4 290.5	SAIPAN RADIO 123.6 (CTAF) 0
----------------------------------	---------------------------------------



ELEV 270	D				
MIRL Rwy 8-26		REIL Rwys 8 and 26			
FAF to MAP 8 NM					
Knots	60	90	120	150	180
Min:Sec	8:00	5:20	4:00	3:12	2:40
CATEGORY	A	B	C	D	
C CIRCLING	1060-1	790 (800-1)	1060-2¼ 790 (800-2¼)	1060-2½ 790 (800-2½)	
# UYHEW FIX MINIMUMS					
C CIRCLING	1000-1	730 (800-1)	1000-2 730 (800-2)	1060-2½ 790 (800-2½)	

PAC, 25 JAN 2024 to 21 MAR 2024

PAC, 25 JAN 2024 to 21 MAR 2024

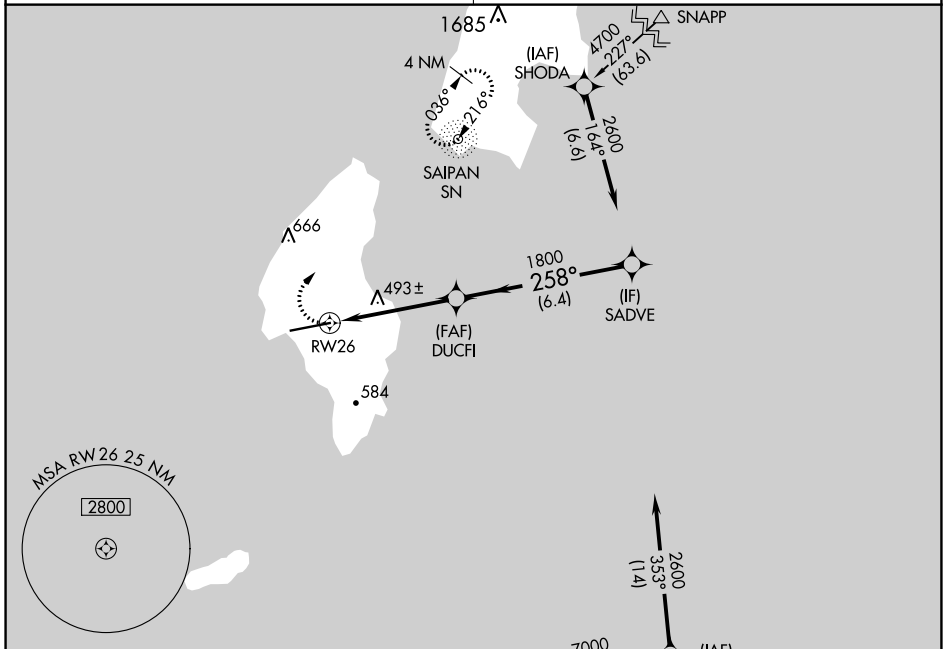
APP CRS	Rwy Idg	8600
258°	TDZE	270
	Apt Elev	270

RNAV (GPS) RWY 26

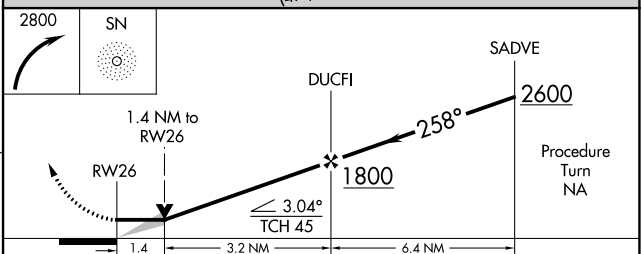
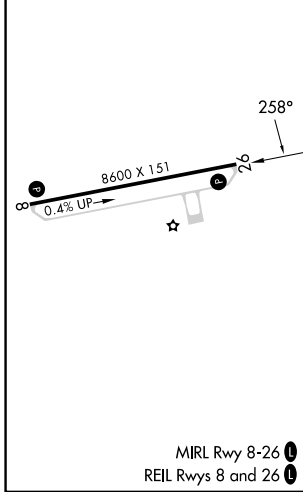
FRANCISCO MANGLONA BORJA/TINIAN INTL (TNI)(PGWT)

RNP APCH.	MISSED APPROACH: Climbing right turn to 2800 direct SN NDB and hold, continue climb-in-hold to 2800.
<p>▼ Obtain local altimeter setting on CTAF; when not received, use Saipan altimeter setting. VDP NA when using Saipan altimeter setting.</p>	

GUAM CERAP 118.4 290.5	SAIPAN RADIO 123.6 (CTAF)
----------------------------------	-------------------------------------



ELEV 270	D	TDZE 270
----------	----------	----------



CATEGORY	A	B	C	D
LNAV MDA	760-1	490 (500-1)	760-1¼ 490 (500-1¼)	760-1½ 490 (500-1½)
C CIRCLING	760-1 490 (500-1)	860-1 590 (600-1)	1000-2 730 (800-2)	1060-2½ 790 (800-2½)
SAIPAN ALTIMETER SETTING MINIMUMS				
LNAV MDA	780-1	510 (600-1)	780-1½	510 (600-1½)
C CIRCLING	800-1 530 (600-1)	900-1 630 (700-1)	1040-2¼ 770 (800-2¼)	1100-2¾ 830 (900-2¾)

MIRL Rwy 8-26 **D**
REIL Rwys 8 and 26 **D**

RNAV (GPS) RWY 26

PAC, 25 JAN 2024 to 21 MAR 2024

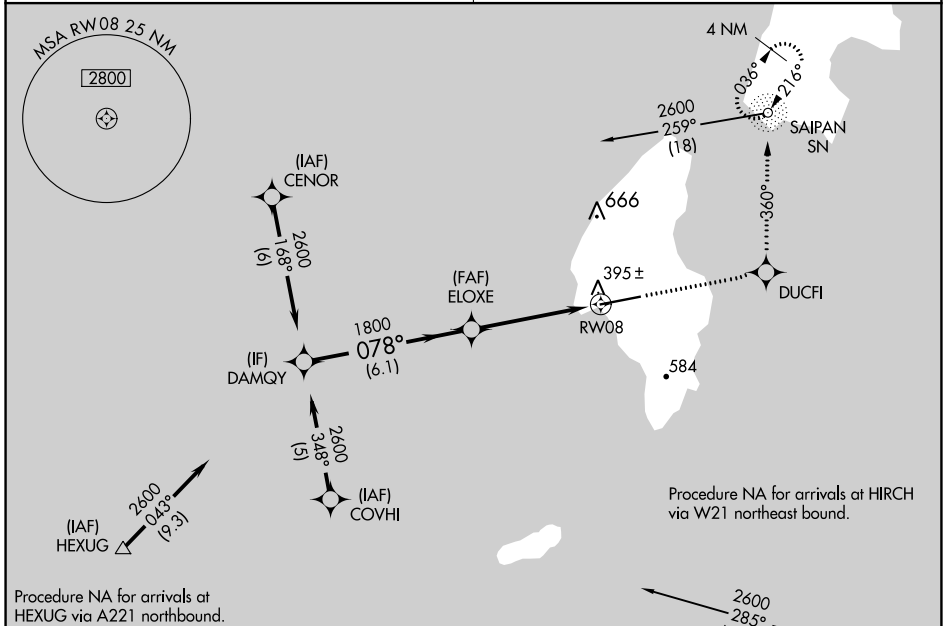
PAC, 25 JAN 2024 to 21 MAR 2024

APP CRS	Rwy Idg	8600
078°	TDZE	243
	Apt Elev	270

RNAV (GPS) RWY 8

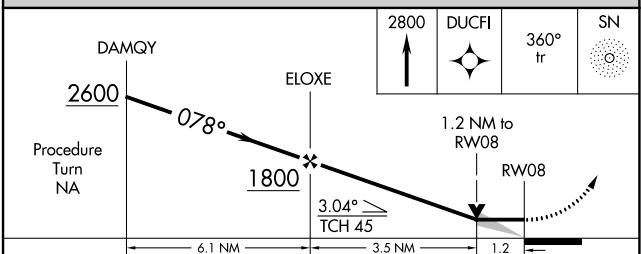
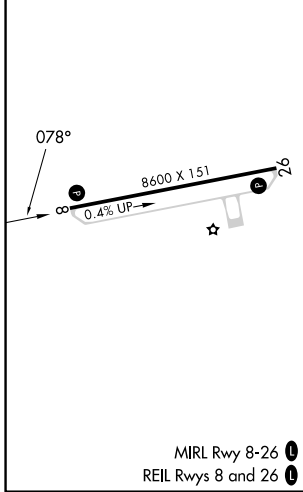
FRANCISCO MANGLONA BORJA/TINIAN INTL (TNI)(PGWT)

RNP APCH	Obtain local altimeter setting on CTAF; when not received, use Saipan altimeter setting. VDP NA when using Saipan altimeter setting.	MISSED APPROACH: Climb to 2800 direct DUCFI and via 360° track to SN NDB and hold, continue climb-in-hold to 2800.
GUAM CERAP 118.4 290.5		SAIPAN RADIO 123.6 (CTAF)



Procedure NA for arrivals at HEXUG via A221 northbound.

ELEV 270	D	TDZE 243
----------	----------	----------



CATEGORY	A	B	C	D
LNAV MDA	660-1	417 (400-1)	660-1¼	417 (400-1¼)
C CIRCLING	760-1 490 (500-1)	860-1 590 (600-1)	1000-2 730 (800-2)	1060-2½ 790 (800-2½)
SAIPAN ALTIMETER SETTING MINIMUMS				
LNAV MDA	680-1	437 (500-1)	680-1¼	437 (500-1¼)
C CIRCLING	800-1 530 (600-1)	900-1 630 (700-1)	1040-2¼ 770 (800-2¼)	1100-2¾ 830 (900-2¾)

MIRL Rwy 8-26 **1**
REIL Rwy 8 and 26 **1**

RNAV (GPS) RWY 8

PAC, 25 JAN 2024 to 21 MAR 2024

PAC, 25 JAN 2024 to 21 MAR 2024