

WAHIAWA, OAHU I, HAWAII

AL-2832 [USA]

WHEELER AAF (PHIH)

RNAV (GPS)-C

23250

ARCH CRS	Rwy Idg	N/A
352°	TDE	N/A
	Apri Elev	843

RNP ARCH - GPS

DME required

✘ Circling to Rwy 24 not authorized at night.
✘ Circling not authorized N Rwy 6-24 when class D surface area is VFR.

MISSED APPROACH: (Do not exceed 220 KIAS until initial turn completion.) Climbing right turn to 6000 direct HNL VORTAC, track 171° to ALANA and hold.

ATIS
119.675 242.4

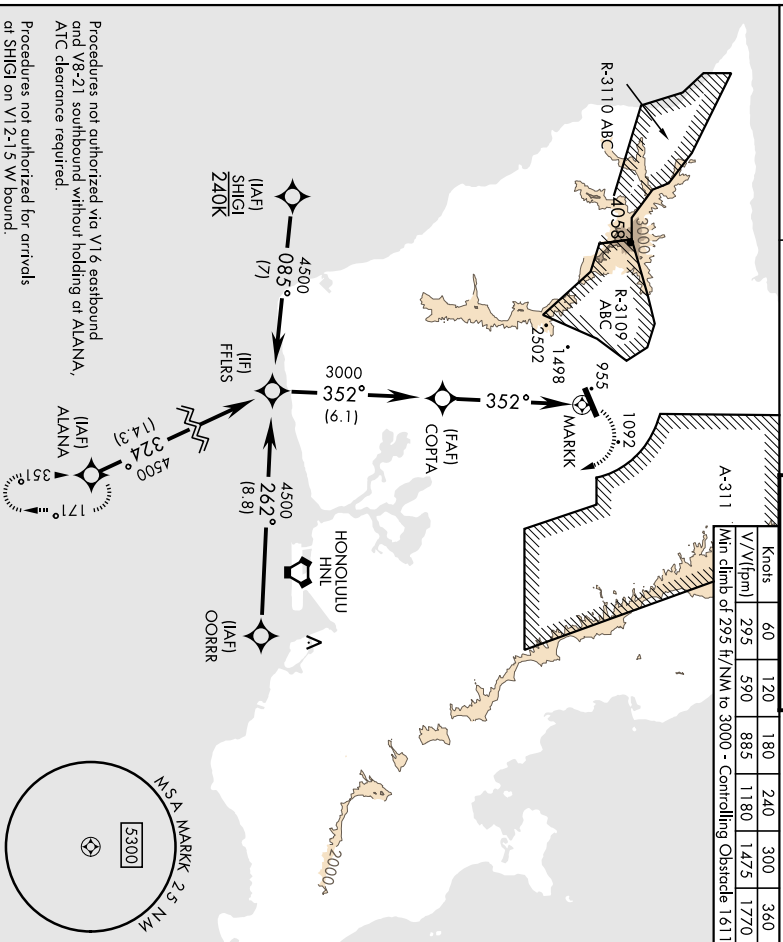
HCF APP CON
118.3 269.0

TOWER *
126.3 (CTAF) 235.625

GND CON
41.5 FM 121.85 237.5

Knobs	60	120	180	240	300	360
V/V (ft/min)	295	590	885	1180	1475	1770

Min climb of 295 ft/NM to 3000 - Controlling Obstacle 1611

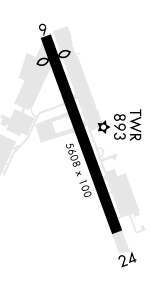


Procedures not authorized via VI 6 eastbound and V8-21 southbound without holding at ALANA, AIC clearance required.
Procedures not authorized for arrivals at SHIGI on VI 2-1.5 W bound.

When local altimeter not received use HNL INTL altimeter setting and minimums.

FLRS	6000	HNL	ALANA

ELEV 843
Rwy 6 Idg 5038'



CATEGORY	A	B	C	D
QIRCLING *	1400-1 557 (600-1)	1800-1½ 957 (1000-1½)	2820-3 1977 (2000-3)	NOT AUTHORIZED
QIRCLING*	1560-1 717 (800-1)	1960-1½ 1117 (1200-1½)	2980-3 2137 (2200-3)	NOT AUTHORIZED

WAHIAWA, OAHU I, HAWAII

21° 29'N-158°02'W

Rwy 6-24

WHEELER AAF (PHIH)

Arrch 1 07SEP23

RNAV (GPS)-C

VORTAC HNL
114.8
Chan **95**

APCH CRS
319°
Appt Elev **843**

AL-2832 [USA]

WHEELER AAF (PHH)

VOR or TACAN-B

▲ * Circling not authorized N Rwy 6-24 when class D surface area is VFR.
Circling to Rwy 24 not authorized at night.

† MISSED APPROACH: Climb to 3000, then right turn via heading 180° and HNL VORTAC R-319 to cross TACII INT/HNL 7 DME at 6000, then via HNL VORTAC R-319 to HNL VORTAC and hold.

ATIS
119.675 242.4

HCF APP CON
118.3 269.0

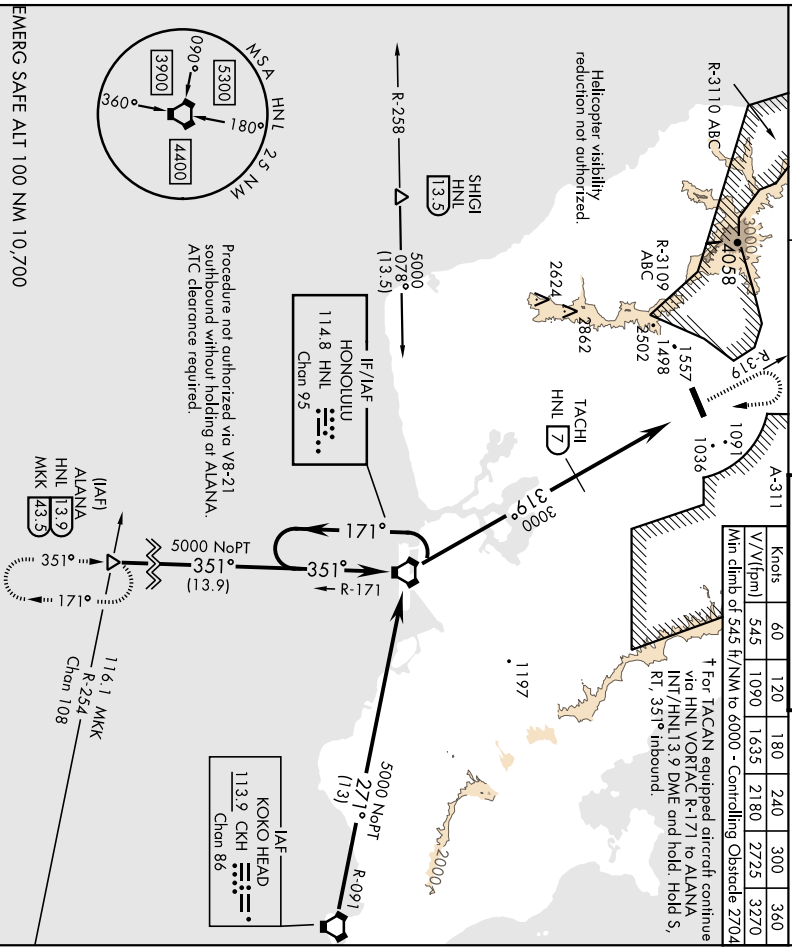
TOWER *
126.31CTAF 235.625

GND CON
41.5 FM 121.85 237.5

Knobs	60	120	180	240	300	360
V/Min	545	1090	1635	2180	2725	3270

Min climb of 545 ft/NM to 8000 - Controlling Obstacle 2704

† For TACAN equipped aircraft continue via HNL VORTAC R-171 to ALANA INT/HNL 13.9 DME and hold. Hold 5, RT, 351° inbound.



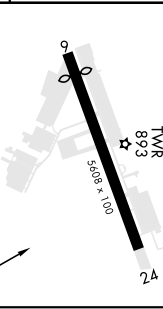
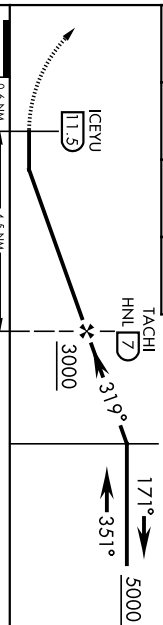
Procedure not authorized via V8-21 southbound without holding at ALANA. ATC clearance required.

EMERG SAFE ALT 100 NM 10,700

3000	hdg 180°	HNL R-319	HNL	ELEV 843
				Rwy 6 Hdg 5038°

When local altimeter not received use HNL INTL altimeter setting and minimums.

VORTAC



CATEGORY	A	B	C	D
CIRCLING *	1400-1 557 (600-1)	1800-1½ 957 (1000-1½)	2820-3 1977 (2000-3)	NOT AUTHORIZED
CIRCLING *	1560-1 717 (800-1)	1960-1½ 1117 (1200-1½)	2980-3 2137 (2200-3)	NOT AUTHORIZED

WAHIAWA, OAHU I, HAWAII

21° 29' N-158° 02' W

Rwy 6-24

WHEELER AAF (PHH)

Amdt 4 07SEP23

VOR or TACAN-B