

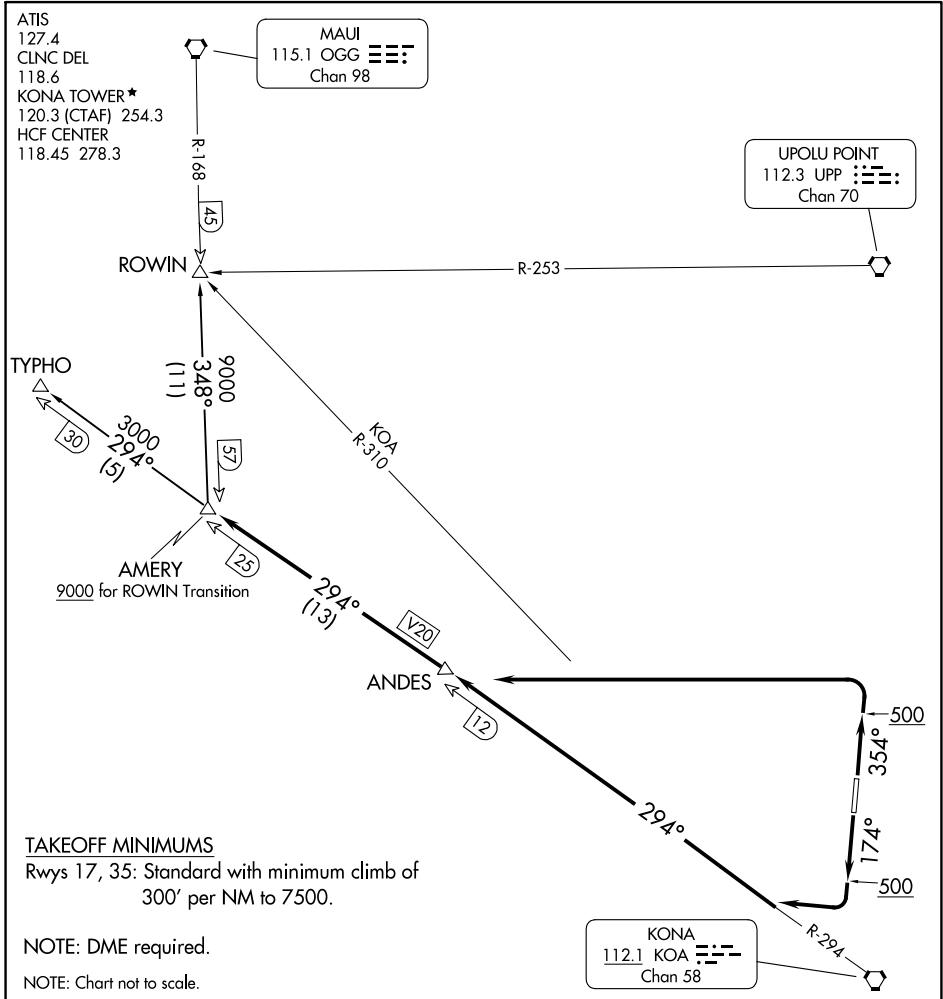
(AMERY4.AMERY) 24025

ELLISON ONIZUKA KONA INTL AT KEAHOLE (KOA) (PHKO)

# AMERY FOUR DEPARTURE

AL-5761 (FAA)

KAILUA-KONA, HAWAII



PAC: 25 JAN 2024 to 21 MAR 2024

PAC: 25 JAN 2024 to 21 MAR 2024



## DEPARTURE ROUTE DESCRIPTION

TAKEOFF RUNWAY 17: Climb heading 174° to 500, then climbing right turn to intercept KOA R-294 to AMERY INT, Thence. . . .

TAKEOFF RUNWAY 35: Climb heading 354° to 500, then climbing left turn to intercept KOA R-294 to AMERY INT, Thence. . . .

. . . .via transition.

ROWIN TRANSITION (AMERY4.ROWIN): From AMERY INT on OGG R-168 to ROWIN INT.

TYPHO TRANSITION (AMERY4.TYPHO): From AMERY INT on KOA R-294 to TYPHO INT.

# AMERY FOUR DEPARTURE

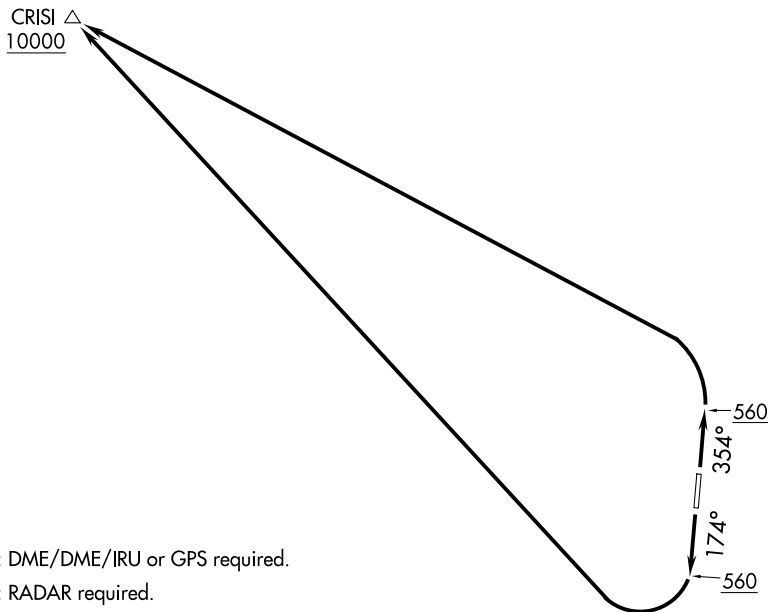
(AMERY4.AMERY) 07DEC17

KAILUA-KONA, HAWAII

ELLISON ONIZUKA KONA INTL AT KEAHOLE (KOA) (PHKO)

ATIS  
127.4  
CLNC DEL  
118.6  
KONA TOWER \*  
120.3 254.3  
HCF CENTER  
118.45 278.3

CRISI  $\Delta$   
10000



NOTE: DME/DME/IRU or GPS required.

NOTE: RADAR required.

NOTE: RNAV 1

**TAKEOFF MINIMUMS**

Rwys 17, 35: Standard.

NOTE: Chart not to scale.



**DEPARTURE ROUTE DESCRIPTION**

TAKEOFF RUNWAY 17: Climb on heading 174° to 560 then climbing right turn to 10000 direct CRISI.

TAKEOFF RUNWAY 35: Climb on heading 354° to 560 then climbing left turn to 10000 direct CRISI.

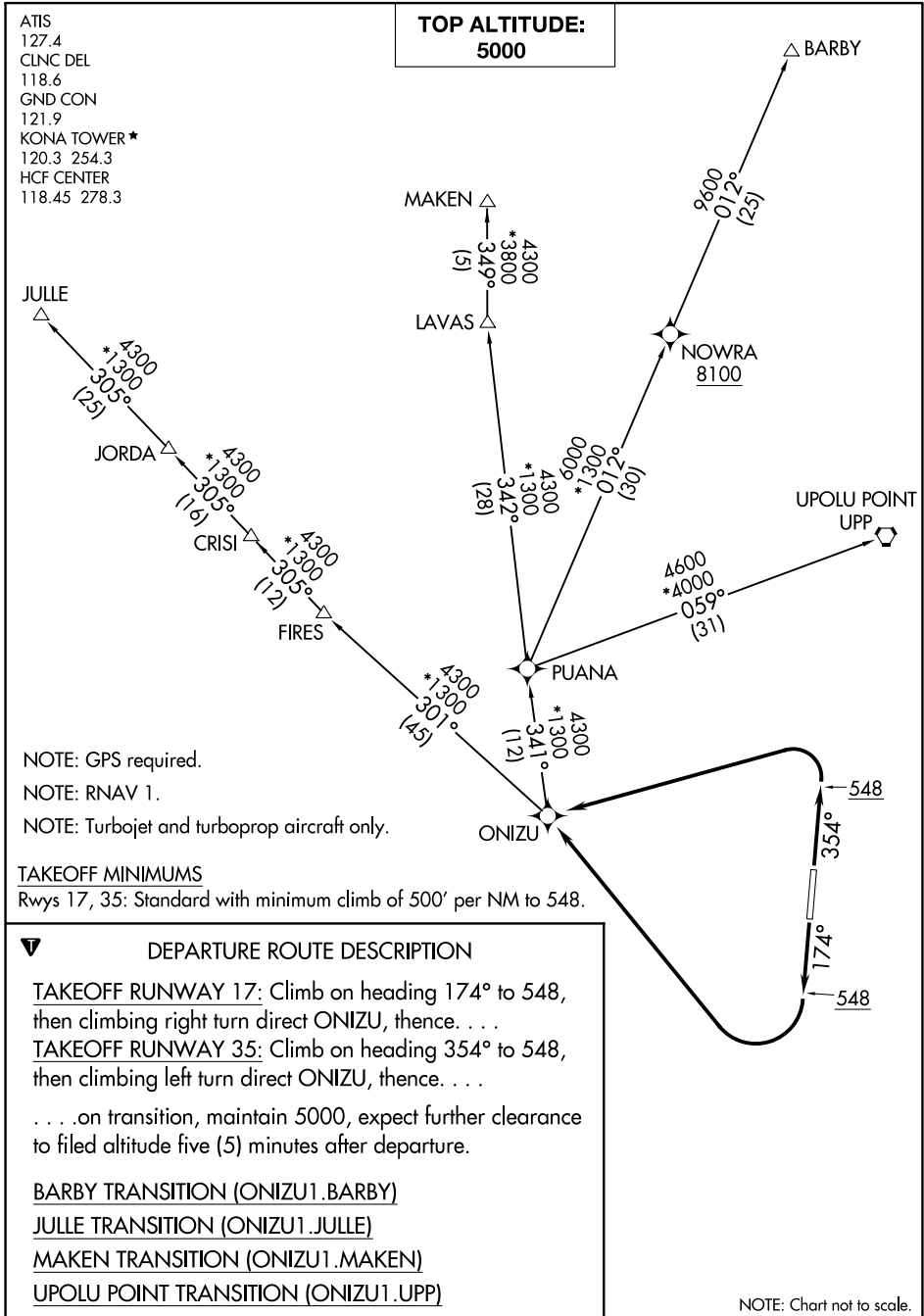
PAC, 25 JAN 2024 to 21 MAR 2024

PAC, 25 JAN 2024 to 21 MAR 2024

ONIZU ONE DEPARTURE (RNAV)

AL-576 (FAA)

KAILUA-KONA, HAWAII



PAC, 25 JAN 2024 to 21 MAR 2024

PAC, 25 JAN 2024 to 21 MAR 2024

ONIZU ONE DEPARTURE (RNAV)

KAILUA-KONA, HAWAII