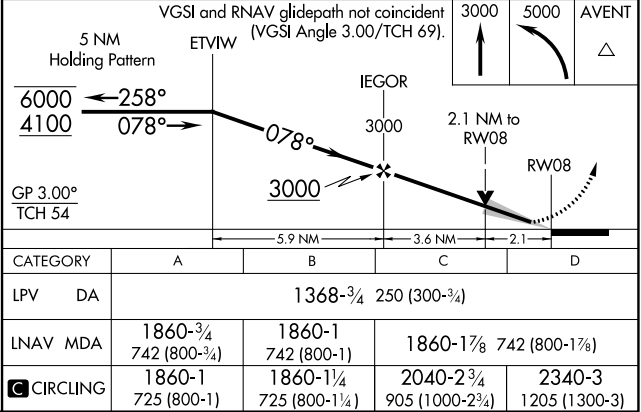
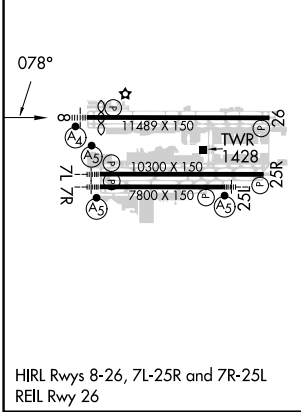
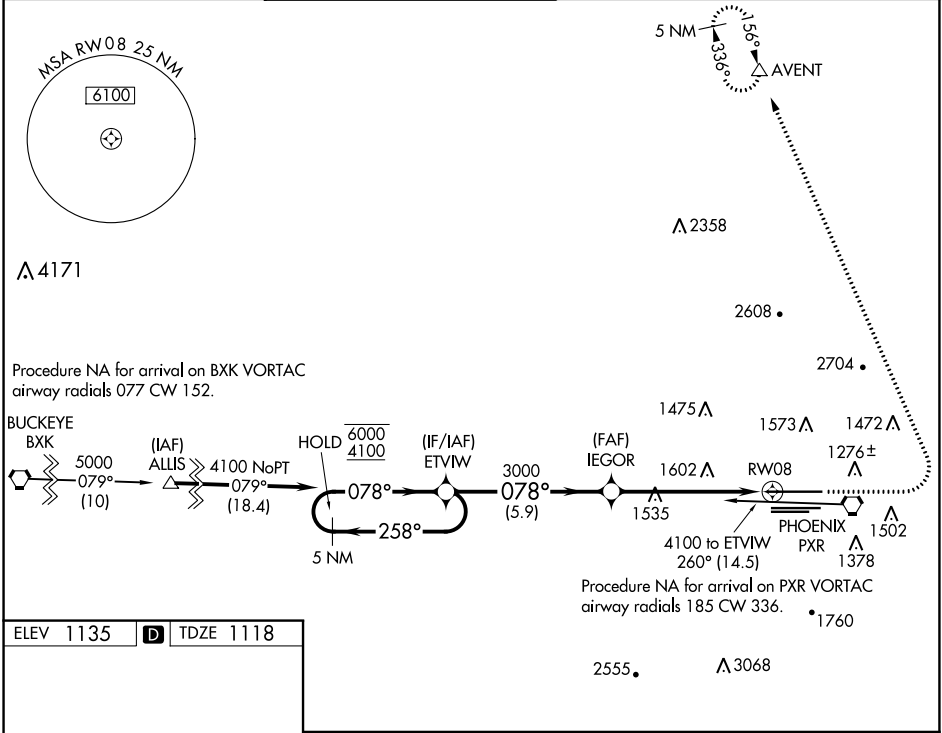


WAAS CH <b>86611</b> <b>W08A</b>	APP CRS <b>078°</b>	Rwy Idg <b>10591</b> TDZE <b>1118</b> Apt Elev <b>1135</b>
--	------------------------	--

# RNAV (GPS) Y RWY 8

PHOENIX SKY HARBOR INTL (PHX)

RNP APCH - GPS.		MALSF	MISSED APPROACH: Climb to 3000 then climbing left turn to 5000 direct AVENT and hold.		
<p><b>⚠</b> Simultaneous approach authorized. LNAV procedure NA during simultaneous operations. Inop table does not apply to LPV all Cats. For inop ALS, increase LNAV Cats C and D visibility to 2 SM.</p>					
D-ATIS <b>127.575</b>	PHOENIX APP CON <b>128.65 353.9</b>	PHOENIX TOWER <b>118.7 278.8</b> (Rwy 8-26) <b>120.9 254.3</b> (Rwy 7L-25R, 7R-25L)	GND CON <b>119.75 269.2</b> (N) <b>132.55 269.2</b> (S)	CLNC DEL <b>118.1 269.2</b>	CPDLC



SW-4, 22 FEB 2024 to 21 MAR 2024

SW-4, 22 FEB 2024 to 21 MAR 2024