

VORTAC BRO <b>116.3</b> Chan <b>110</b>	APP CRS <b>357°</b>	Rwy Idg TDZE Apt Elev	<b>N/A</b> <b>N/A</b> <b>19</b>
-----------------------------------------------	------------------------	-----------------------------	---------------------------------------

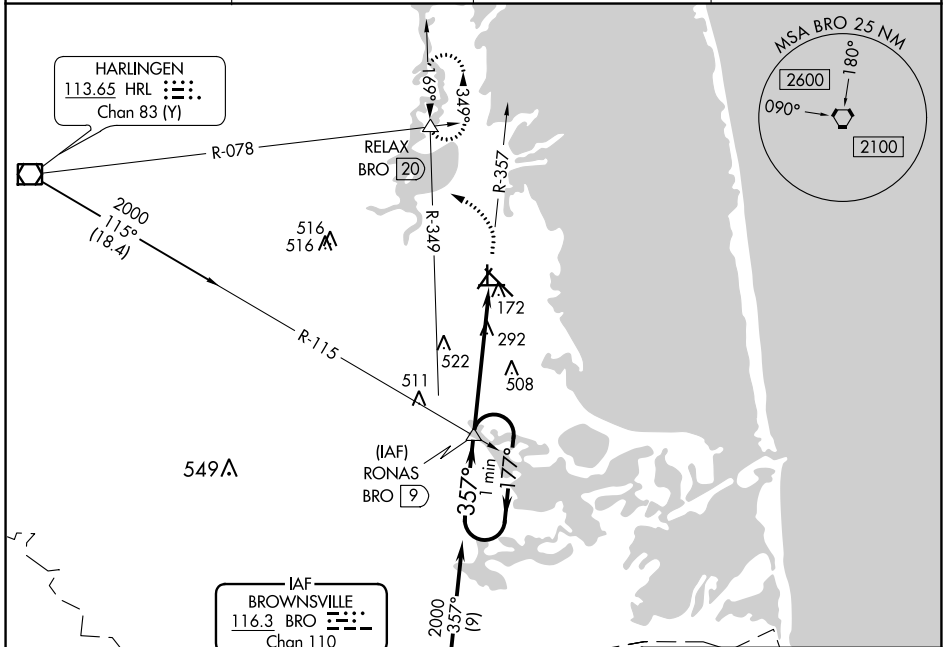
# VOR-A

PORT ISABEL-CAMERON COUNTY (PIL)

**▼** When local altimeter setting not received, use Brownsville altimeter setting and increase all MDA 40 feet and increase Cat C visibility  $\frac{1}{4}$  mile. Circling Rwys 3, 8, 17, 21, 26, 35 NA at night.

**▲ NA** MISSED APPROACH: Climb to 2000 then turn left via BRO R-349 to RELAX INT/BRO 20 DME and hold.

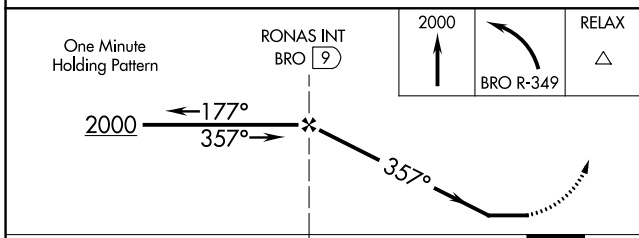
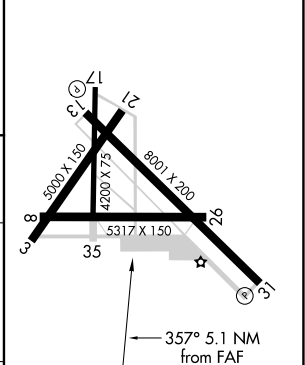
ASOS <b>118.525</b>	VALLEY APP CON <b>119.5 257.6</b>	CINC DEL <b>119.2</b>	UNICOM <b>122.8</b> (CTAF)
------------------------	--------------------------------------	--------------------------	-------------------------------



SC-3, 22 FEB 2024 to 21 MAR 2024

SC-3, 22 FEB 2024 to 21 MAR 2024

ELEV 19  
REIL Rwys 13 and 31  
MIRL Rwy 13-31



CATEGORY	A	B	C	D	FAF to MAP 5.1 NM					
<b>☐</b> CIRCLING	780-1	761 (800-1)	840-2 $\frac{1}{2}$ 821 (900-2 $\frac{1}{2}$ )	NA	Knots	60	90	120	150	180
					Min:Sec	5:06	3:24	2:33	2:02	1:42