


RNAV (RNP) Z RWY 21R

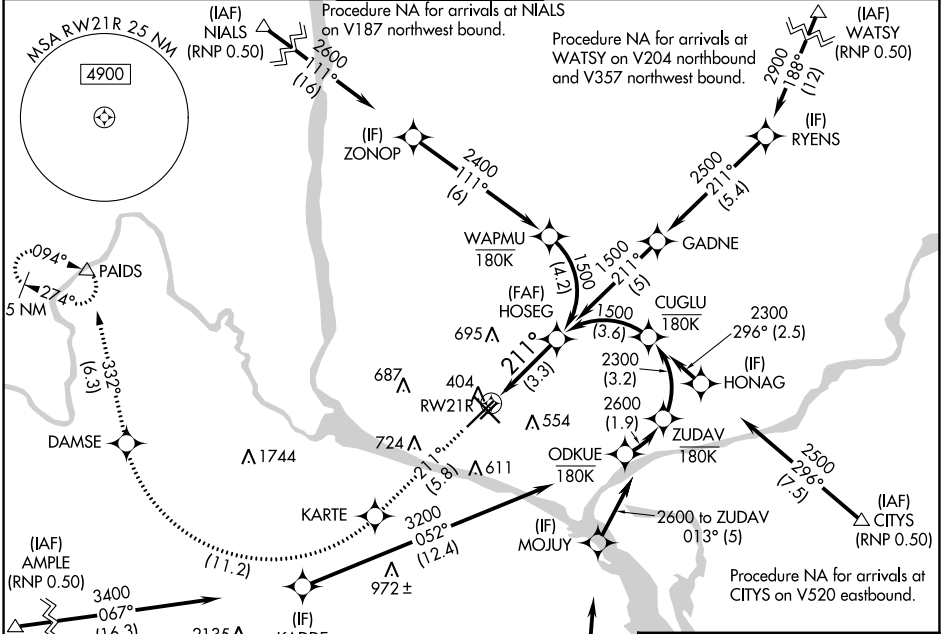
TRI-CITIES (PSC)

APP CRS	Rwy Idg	7110
211°	TDZE	404
	Apt Elev	410



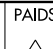
▽ For uncompensated Baro-VNAV systems, procedure NA below -14°C (7°F) or above 54°C (130°F). GPS required. RF required. For inoperative MALS, increase RNP 0.11 all Cats visibility to RVR 5700 and RNP 0.30 all Cats visibility to 1 3/8 mile.

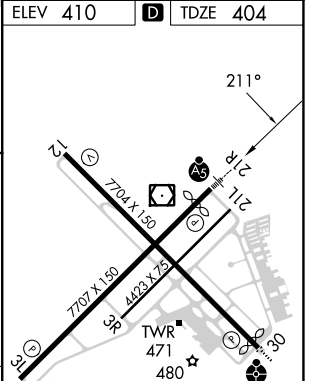
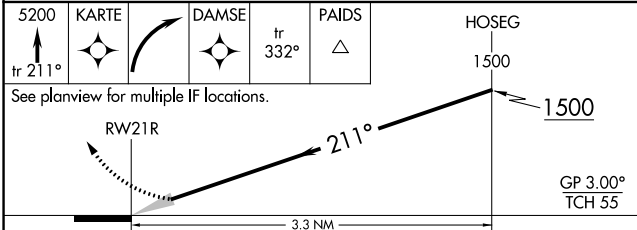
MALS  MISSED APPROACH: Climb to 5200 on track 211° to KARTE, right turn to DAMSE, and on track 332° to PAIDS and hold.

ATIS 125.65	SPOKANE APP CON * 128.75 377.2	TRI-CITIES TOWER* 135.3 (CTAF) 0 323.3	GND CON 121.8	CLNC DEL 120.0	UNICOM 122.95
-----------------------	--	--	-------------------------	--------------------------	-------------------------





ELEV 410	D TDZE 404
----------	-------------------

5200 KARTE  DAMSE  PAIDS  HOSEG
tr 211° tr 332°



CATEGORY	A	B	C	D
RNP 0.11 DA		754/33	350 (400-5/8)	
RNP 0.30 DA		832/48	428 (500-1)	

AUTHORIZATION REQUIRED

REIL Rwy 3L and 12
MIRL Rwy 12-30 
HIRL Rwy 3L-21R 

NW-1, 22 FEB 2024 to 21 MAR 2024

NW-1, 22 FEB 2024 to 21 MAR 2024