

WAAS CH 70705 W05A	APP CRS 051°	Rwy Idg 5002 TDZE 193 Apt Elev 193
--	------------------------	---

RNAV (GPS) RWY 5

TRI CITIES EXEC/DINWIDDIE COUNTY (P/TB)

⚠ Inop table does not apply to LPV all Cats, LNAV/VNAV all Cats and LNAV Cat A and B. For uncompensated Baro-VNAV systems, LNAV/VNAV NA below -15°C (5°F) or above 54°C (130°F). Baro-VNAV and VDP NA when using Richmond Exec/Chesterfield County altimeter setting. DME/DME RNP-0.3 NA. Helicopter visibility reduction below ¼ SM NA. When local altimeter setting not received, use Richmond Exec/Chesterfield County altimeter setting; increase LPV DA to 534 feet and LNAV/VNAV DA to 546 feet and all MDA 40 feet; increase LNAV Cat C visibility ½ mile and increase Circling Cat C visibility ¼ mile. For inop ODALS when using Richmond Exec/Chesterfield County altimeter setting, increase LPV all Cats visibility and LNAV/VNAV all Cats visibility to 1½ mile. Inop table does not apply to LNAV Cat A and B when using Richmond Exec/Chesterfield County altimeter setting. For inop ODALS, increase LNAV Cat C visibility to 1½ mile.

ODALS

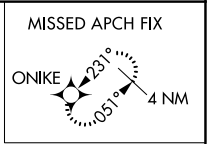
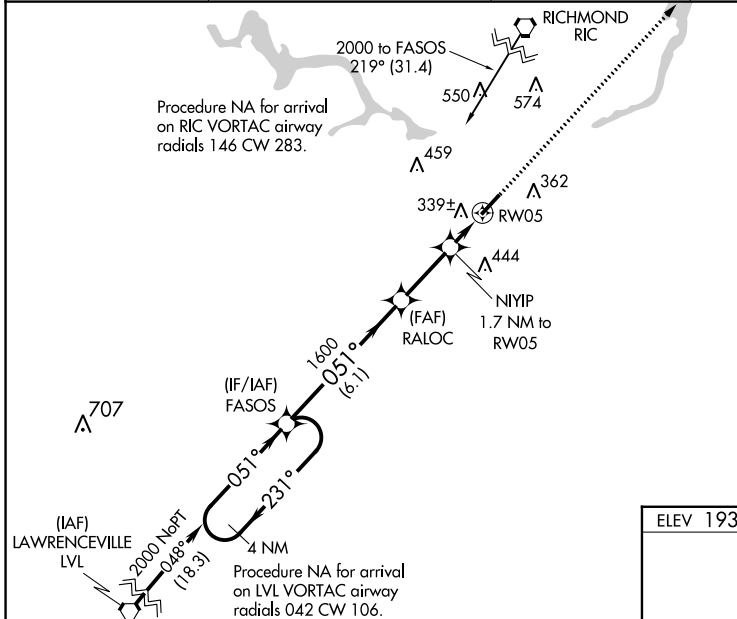
MISSED APPROACH: Climb to 2000 direct ONIKE and hold.

AWOS-3 133.325

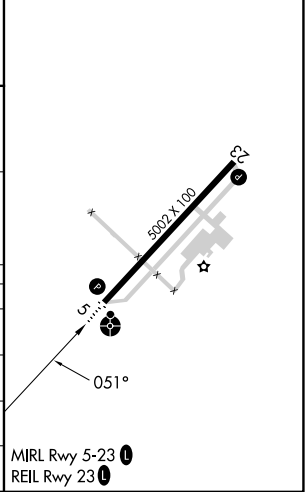
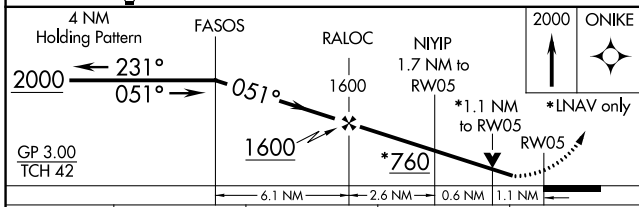
POTOMAC APP CON 126.75 307.2
--

GCO 135.075

UNICOM 122.7 (CTAF)



ELEV 193	TDZE 193
----------	----------



CATEGORY	A	B	C	D
LPV DA	497-1	304 (400-1)		NA
LNAV/VNAV DA	509-1	316 (400-1)		NA
LNAV MDA	600-1	407 (500-1)		NA
CIRCLING	680-1	487 (500-1)	760-1½ 567 (600-1½)	NA

NE-3, 22 FEB 2024 to 21 MAR 2024

NE-3, 22 FEB 2024 to 21 MAR 2024