

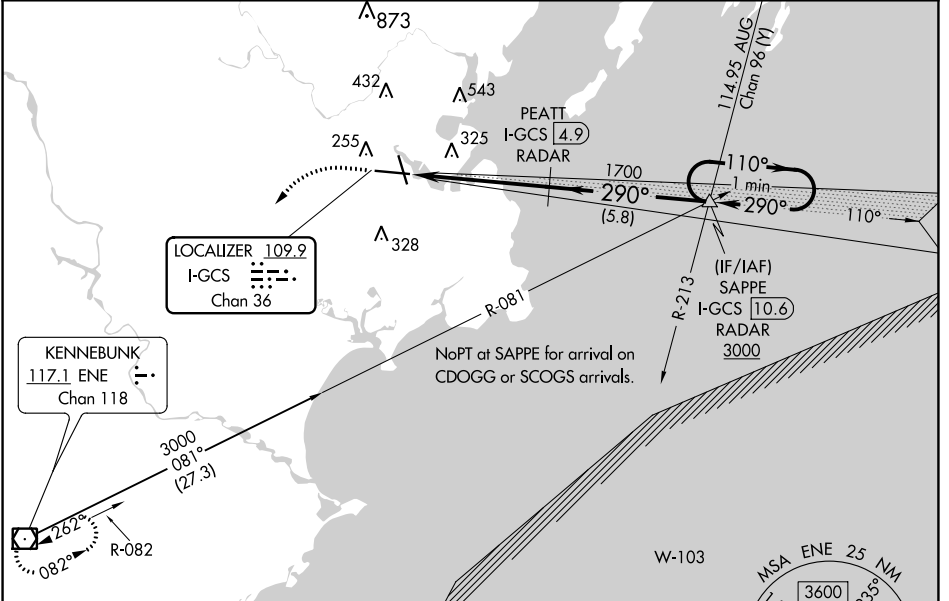
LOC/DME I-GCS 109.9 Chan 36	APP CRS 290°	Rwy Idg TDZE Apt Elev	7200 56 76
---	------------------------	-----------------------------	---------------------------------------

ILS RWY 29 (SA CAT I & II)

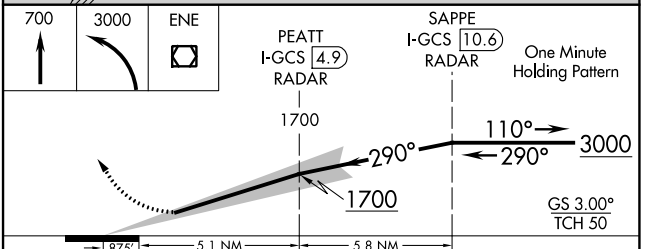
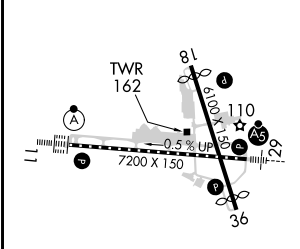
PORTLAND INTL JETPORT (PWM)

<p>▽ DME or RADAR required. DME required when Portland approach control closed. ▲ Procedure NA when control tower closed. SA CAT I: Requires specific OPSPEC, MSPEC, or LOA approval and use of HUD to DH. SA CAT II: Reduced lighting requires specific OPSPEC, MSPEC, or LOA approval and use of Autoland or HUD to touchdown.</p>	<p>MALSR </p>	<p>MISSED APPROACH: Climb to 700 then climbing left turn to 3000 direct ENE VOR/DME and hold.</p>
---	--------------------	--

ATIS 119.05	PORTLAND APP CON ★ 119.75 269.35	PORTLAND TOWER ★ 120.9 (CTAF) 257.8	GND CON 121.9	CLNC DEL 121.9	UNICOM 122.95
-----------------------	--	--	-------------------------	--------------------------	-------------------------



ELEV 76	D	TDZE 56
---------	----------	---------



CATEGORY	A	B	C	D
S-ILS 29 SA CAT I	RA 206/14	150	DA 206	
S-ILS 29 SA CAT II	RA 146/12	100	DA 156	

SA CATEGORY I & II ILS - SPECIAL AIRCREW & AIRCRAFT CERTIFICATION REQUIRED

NE-1, 22 FEB 2024 to 21 MAR 2024

NE-1, 22 FEB 2024 to 21 MAR 2024