


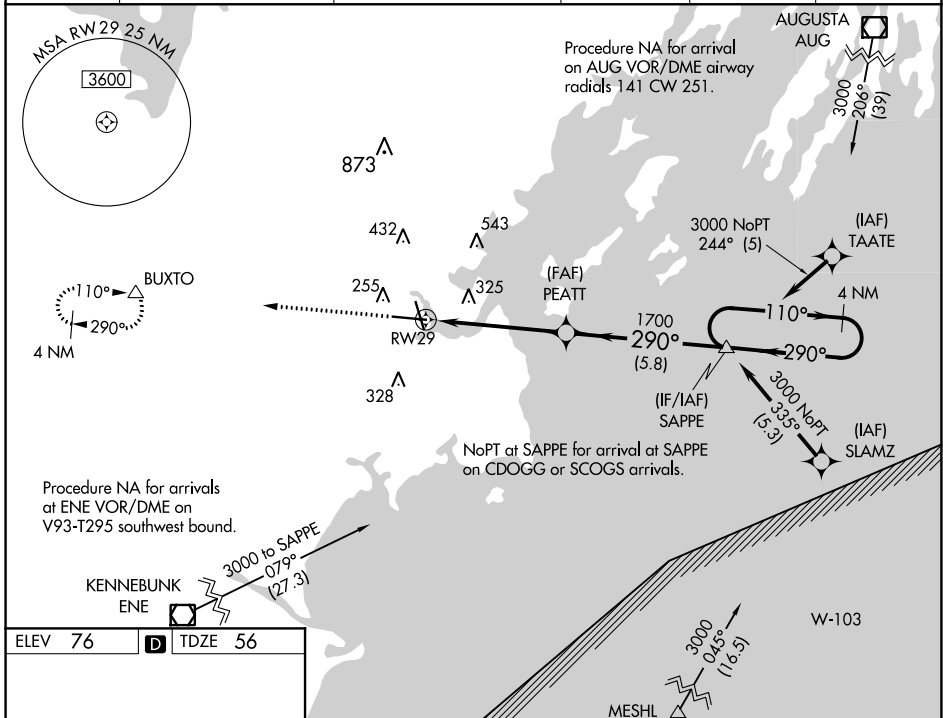
WAAS CH <b>65626</b> <b>W29A</b>	APP CRS <b>290°</b>	Rwy Idg <b>7200</b> TDZE <b>56</b> Apt Elev <b>76</b>
--	------------------------	---

# RNAV (GPS) RWY 29

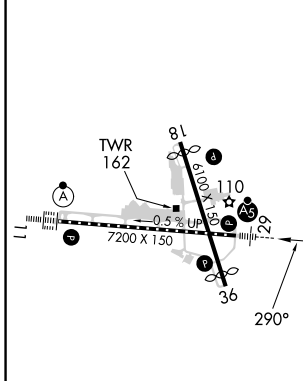
PORTLAND INTL JETPORT (P<sup>WM</sup>)

RNP APCH	<p>▼ For uncompensated Baro-VNAV systems, LNAV/VNAV NA below -18°C or above 54°C. For inop MALSR, increase LNAV/VNAV all Cats visibility to 1½ mile, increase LNAV Cat C/D visibility to 1¾ mile.                  **RVR 1800 authorized with use of FD or AP or HUD to DA.</p>	<p>MALSR</p> 	<p>MISSED APPROACH: Climb to 3000 direct BUXTO and hold, continue climb-in-hold to 3000.</p>
----------	---	--	--

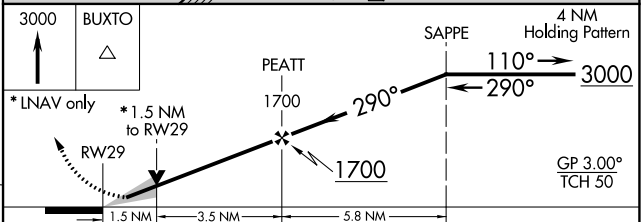
ATIS <b>119.05</b>	PORTLAND APP CON ★ <b>119.75 269.35</b>	PORTLAND TOWER ★ <b>120.9</b> (CTAF) <b>257.8</b>	GND CON <b>121.9</b>	CLNC DEL <b>121.9</b>	UNICOM <b>122.95</b>
-----------------------	--	--	-------------------------	--------------------------	-------------------------



ELEV 76	<b>D</b>	TDZE 56
---------	----------	---------



TDZ/CL Rwy 11 **Ⓛ**  
 MIRL Rwy 18-36 **Ⓛ**  
 HIRL Rwy 11-29 **Ⓛ**  
 REIL Rwy 18 and 36 **Ⓛ**



CATEGORY	A	B	C	D
LPV DA	** 256/24 200 (200-½)			
LNAV/VNAV DA	567-1¾ 511 (500-1¾)			
LNAV MDA	580/24	524 (600-½)	580/55	524 (600-1)
<b>C</b> CIRCLING	620-1 544 (600-1)	640-1 564 (600-1)	740-1¾ 664 (700-1¾)	860-2½ 784 (800-2½)

NE-1, 22 FEB 2024 to 21 MAR 2024

NE-1, 22 FEB 2024 to 21 MAR 2024