

RNAV (GPS) RWY 18

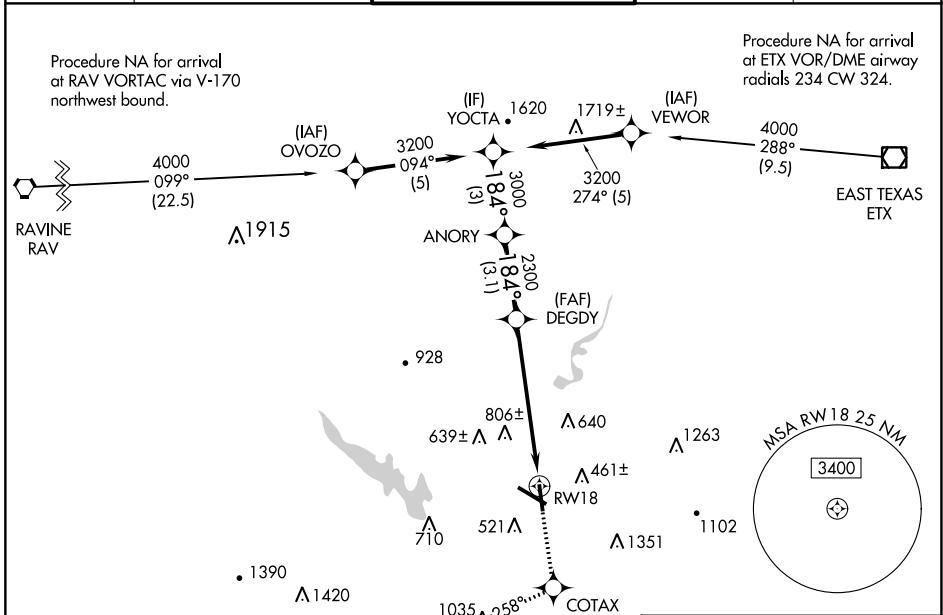
READING RGNL/CARL A SPAATZ FLD (RDG)

APP CRS	Rwy Idg	5151
184°	TDZE	319
	Apt Elev	344

⚠ Night landing: Rwy 18, 31 NA. DME/DME RNP-0.3 NA. Helicopter visibility reduction below 1 SM NA. When local altimeter setting not received, use Harrisburg Intl altimeter setting and increase all MDAs 100 feet, and increase LNAV Cat B visibility ¼ SM and Cat C and D visibility ½ SM, and increase Circling Cats B and C visibility ¼ SM.

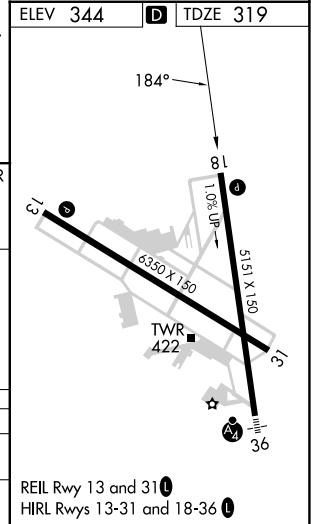
MISSED APPROACH: Climb to 3000 direct COTAX and via 258° track to BOYER and hold, continue climb-in-hold to 3000.

ATIS	READING APP CON *	READING TOWER *	GND CON	UNICOM
127.1	125.15 257.9	119.9 (CTAF) 0 288.3	121.9	122.95



ELEV 344	D TDZE 319
----------	-------------------

	YOCTA	ANORY	DEGDY	RWY 18
Procedure Turn NA	3200	3000	2300	
	3 NM	3.1 NM	6 NM	



CATEGORY	A	B	C	D
LNAV MDA	980-1	661 (700-1)	980-1¾ 661 (700-1¾)	980-2 661 (700-2)
CIRCLING	1020-1 676 (700-1)	1080-1 736 (800-1)	1280-2¾ 936 (1000-2¾)	1660-3 1316 (1400-3)

NE-4, 22 FEB 2024 to 21 MAR 2024

NE-4, 22 FEB 2024 to 21 MAR 2024