

VOR/DME RIL 113.35 Chan 80(Y)	APP CRS 126°	Rwy Idg TDZE Apt Elev N/A N/A 5537
---	------------------------	--

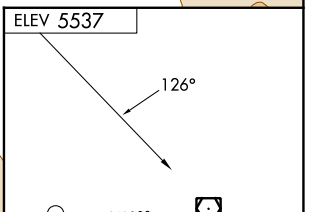
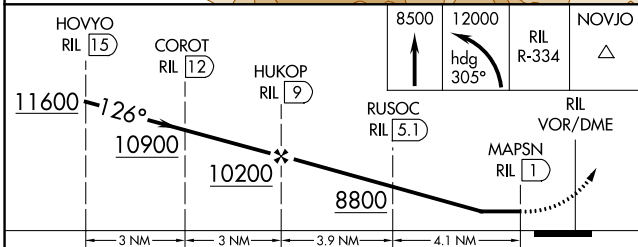
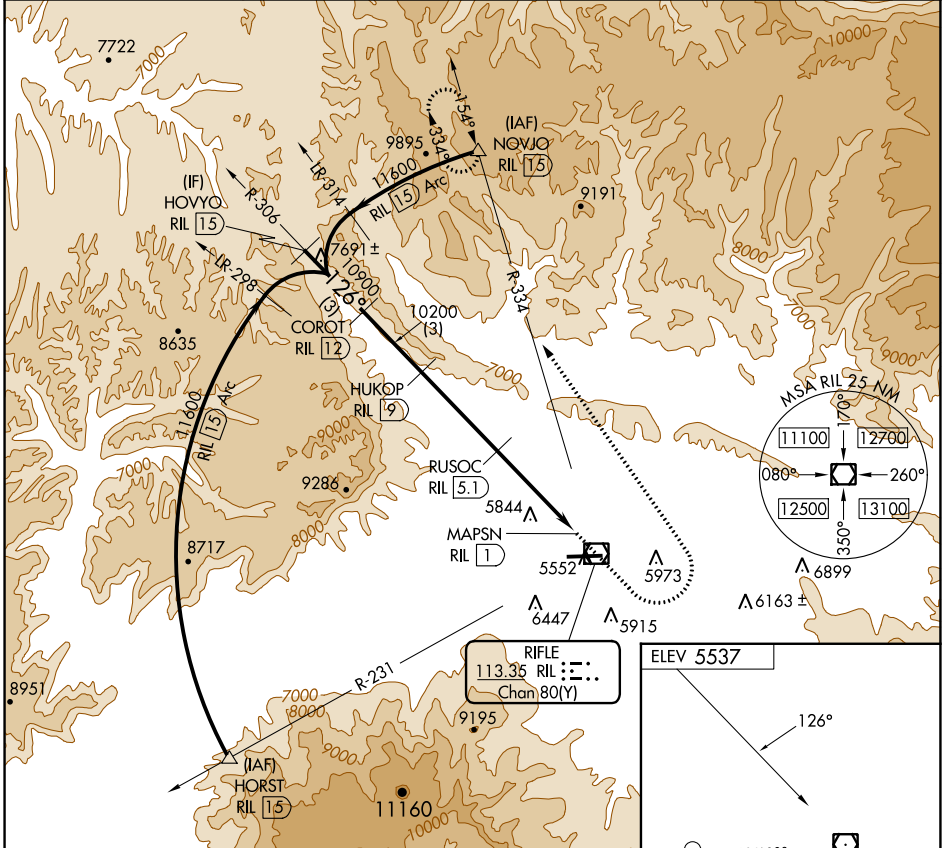
VOR/DME-C

RIFLE GARFIELD COUNTY (RIL)

⚠ Circling NA south of Rwy 8-26 at night.
⚠ -14°C

MISSED APPROACH: Climb to 8500 then climbing left turn 12000 on heading 305° and RIL VOR/DME R-334 to NOVJO/15 DME and hold, continue climb-in-hold to 12400.

ASOS 135.275	DENVER CENTER 134.95 327.075	UNICOM 122.8 (CTAF) 📻
------------------------	--	--



CATEGORY	A	B	C	D	HIRL Rwy 8-26 📻 REIL Rwy 8 📻
📻 CIRCLING	7360-1¼ 1823 (1900-1¼)	7360-1½ 1823 (1900-1½)	7360-3 1823 (1900-3)	NA	

SW-1, 22 FEB 2024 to 21 MAR 2024

SW-1, 22 FEB 2024 to 21 MAR 2024