

WAAS CH <b>45611</b> <b>W04A</b>	APP CRS <b>044°</b>	Rwy Idg <b>8001</b> TDZE <b>535</b> Apt Elev <b>559</b>
--	------------------------	---

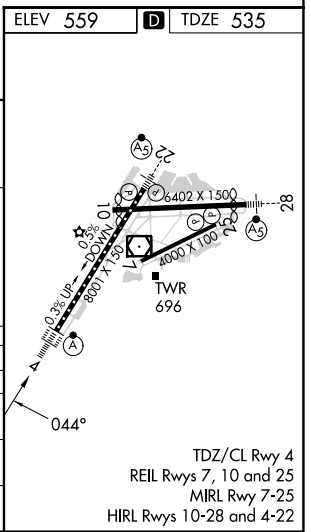
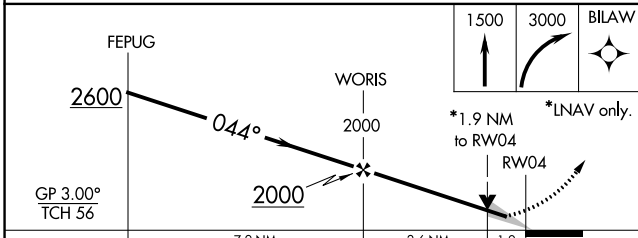
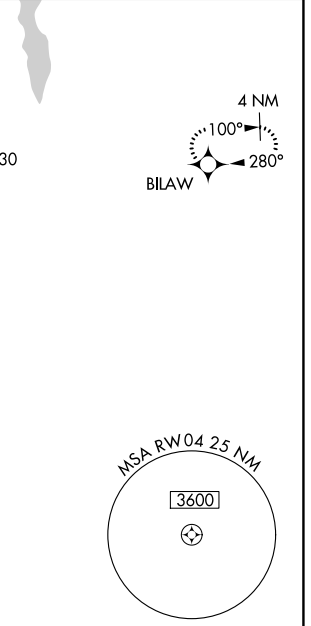
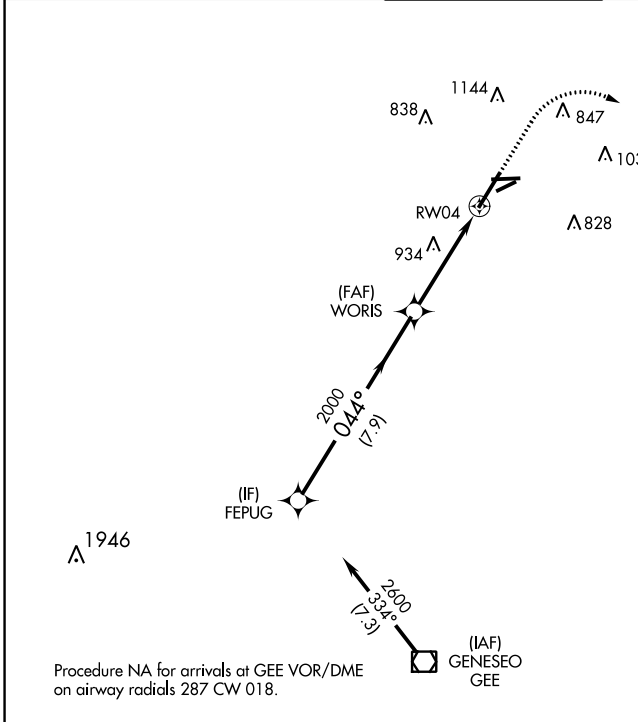
# RNAV (GPS) RWY 4

FREDERICK DOUGLASS/GREATER ROCHESTER INTL (ROC)

**⚠** For uncompensated Baro-VNAV systems, LNAV/VNAV NA below -18°C (0°F) or above 54°C (130°F). DME/DME RNP-0.3 NA. For inop ALSF-2, increase LNAV Cats C/D visibility to 1 1/2.

**ALSF-2**  
**MISSED APPROACH:** Climb to 1500 then climbing right turn to 3000 direct BILAW and hold.

ATIS <b>124.825</b>	ROCHESTER APP CON <b>119.55 269.6</b>	ROCHESTER TOWER <b>118.3 254.3</b>	GND CON <b>121.7</b>	CLNC DEL <b>118.8 343.65</b>
------------------------	--	---------------------------------------	-------------------------	---------------------------------



CATEGORY	A	B	C	D
LPV DA		735/18	200 (200-1/2)	
LNAV/VNAV DA		1290-2 1/4	755 (800-2 1/4)	
LNAV MDA	1200/24	665 (700-1/2)	1200-1 1/2	665 (700-1 1/2)
<b>C</b> CIRCLING	1200-1	641 (700-1)	1500-2 3/4 941 (1000-2 3/4)	1500-3 941 (1000-3)

# RNAV (GPS) RWY 4

NE-2, 22 FEB 2024 to 21 MAR 2024

NE-2, 22 FEB 2024 to 21 MAR 2024