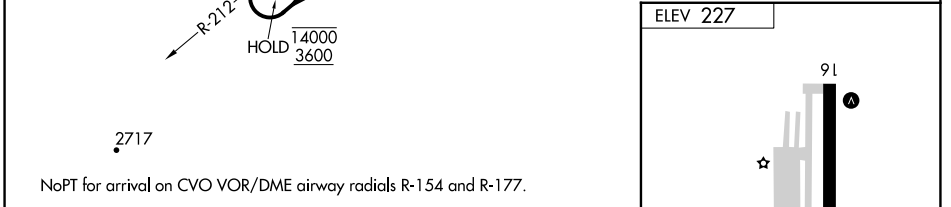
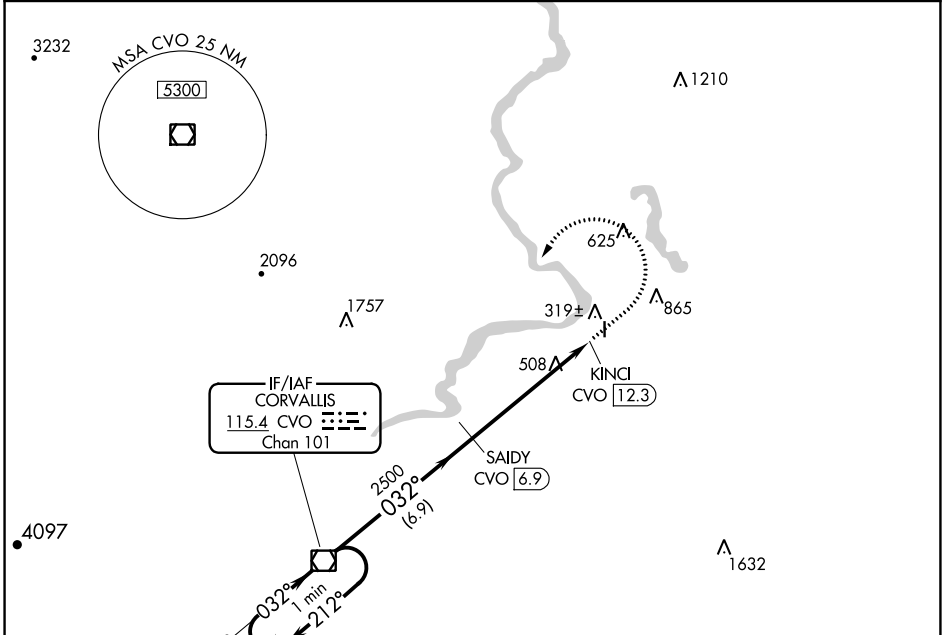


VOR/DME CVO 115.4 Chan 101	APP CRS 032°	Rwy ldg TDZE Apt Elev	N/A N/A 227
--	------------------------	--------------------------	--

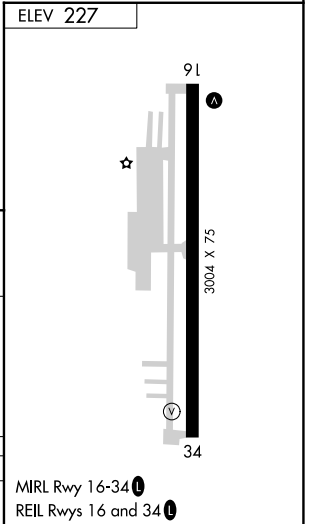
VOR-A
ALBANY MUNI (S12)

DME required.	MISSED APPROACH: Climb to 1300 then climbing left turn to 3600 on CVO VOR/DME R-032 to CVO VOR/DME and hold.
<p>▼ Rwy 16 and 34 helicopter visibility reduction below 1 SM NA. When</p> <p>▲ NA local altimeter setting not received, use Corvallis altimeter setting.</p>	

AWOS-3PT 119.925	CASCADE APP CON * 127.5 348.7	UNICOM 122.725 (CTAF) 0
----------------------------	---	-----------------------------------



One Minute Holding Pattern	CVO VOR/DME	1300	3600	CVO
14000 ← 212°		↑	↻ CVO R-032	☐
3600 → 032°				
	SAIDY CVO (6.9)			
				KINCI CVO (12.3)
	6.9 NM			5.4 NM



CATEGORY	A	B	C	D
☐ CIRCLING	940-1 713 (800-1)	1020-1 793 (800-1)	NA	

MIRL Rwy 16-34 0
REIL Rwy 16 and 34 0

NW-1, 22 FEB 2024 to 21 MAR 2024

NW-1, 22 FEB 2024 to 21 MAR 2024