

# BOWIE SEVEN DEPARTURE

**TOP ALTITUDE:  
5000**

D-ATIS  
118.9  
CLNC DEL  
126.7  
CPDLC  
GND CON  
121.9 348.6  
SAN ANTONIO DEP CON  
125.7 290.225 (Rwys 13/22/31)  
127.1 269.1 (Rwy 4 CORPUS CHRISTI TRANSITION)  
125.1 307.0 (Rwy 4 LAREDO TRANSITION)  
SAN ANTONIO TOWER  
119.8 257.8

TAKEOFF MINIMUMS

Rwys 4, 13L, 13R, 22,  
31L, 31R: Standard.

NOTE: RADAR Required.

SAN ANTONIO  
116.8 SAT   
Chan 115  
N29°38.64'  
W98°27.68'

YENNS  
N29°04.08'  
W98°19.32'

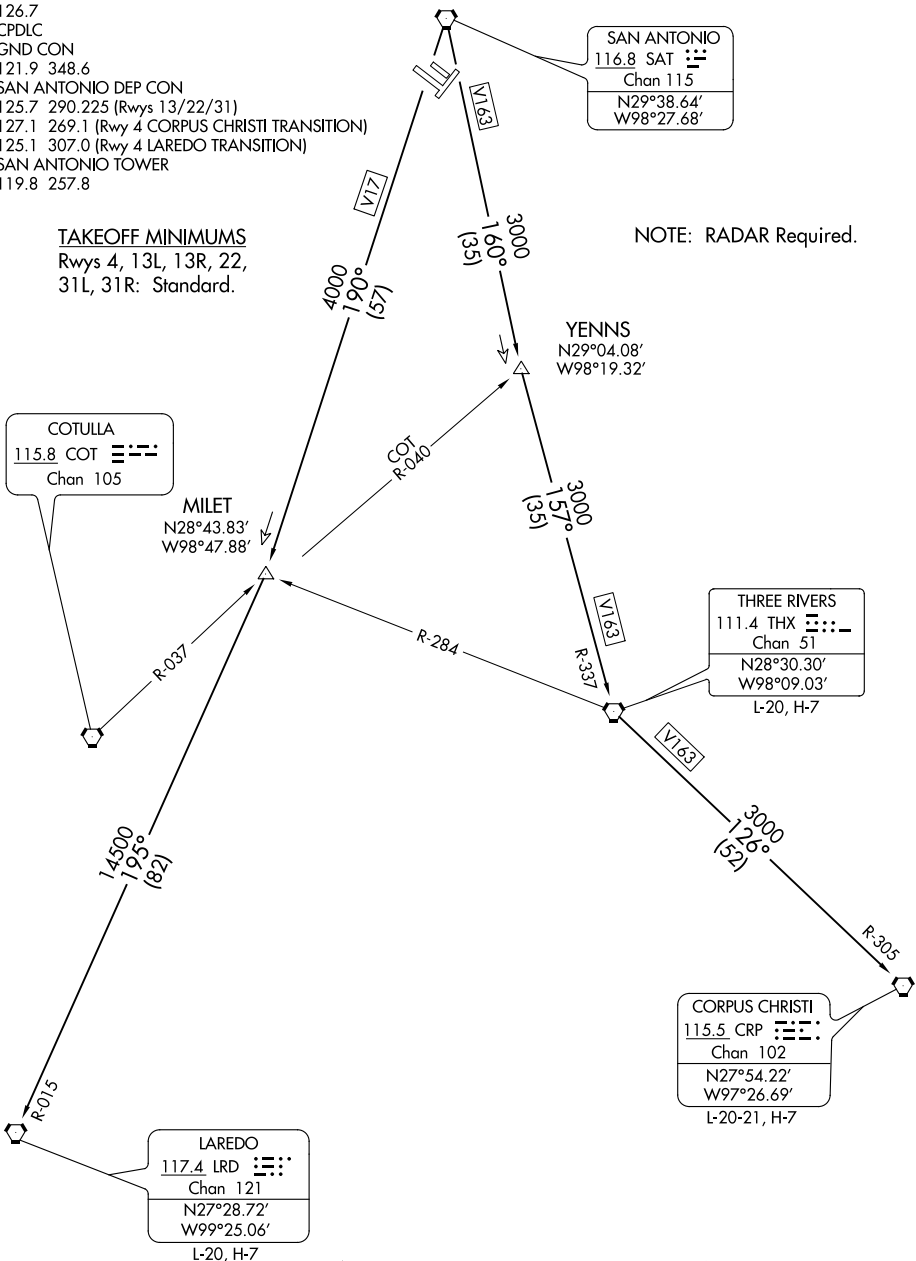
COTULLA  
115.8 COT   
Chan 105

MILET  
N28°43.83'  
W98°47.88'

THREE RIVERS  
111.4 THX   
Chan 51  
N28°30.30'  
W98°09.03'  
L-20, H-7

CORPUS CHRISTI  
115.5 CRP   
Chan 102  
N27°54.22'  
W97°26.69'  
L-20-21, H-7

LAREDO  
117.4 LRD   
Chan 121  
N27°28.72'  
W99°25.06'  
L-20, H-7



NOTE: Chart not to scale.

(NARRATIVE ON FOLLOWING PAGE)

SC-3, 22 FEB 2024 to 21 MAR 2024

SC-3, 22 FEB 2024 to 21 MAR 2024

# BOWIE SEVEN DEPARTURE

# BOWIE SEVEN DEPARTURE



## DEPARTURE ROUTE DESCRIPTION

TAKEOFF RWYS 4, 13L 13R, 22, 31L, 31R: Climb on assigned heading for RADAR vectors to SAT VORTAC. Maintain 5000, thence. . .

. . . on transition/route. Expect filed altitude 10 minutes after departure.

CORPUS CHRISTI TRANSITION (BOWIE7.CRP): From over SAT VORTAC on SAT R-160 to YENNS INT/SAT 35 DME, then on THX R-337 to THX VORTAC, then on THX R-126 and CRP R-305 to CRP VORTAC.

LAREDO TRANSITION (BOWIE7.LRD): From over SAT VORTAC on SAT R-190 to MILET INT/SAT 57 DME, then on LRD R-015 to LRD VORTAC.

SC-3, 22 FEB 2024 to 21 MAR 2024

SC-3, 22 FEB 2024 to 21 MAR 2024