

APP CRS	Rwy Idg	8505
217°	TDZE	770
	Apt Elev	809

RNAV (RNP) Z RWY 22

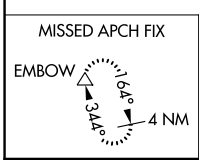
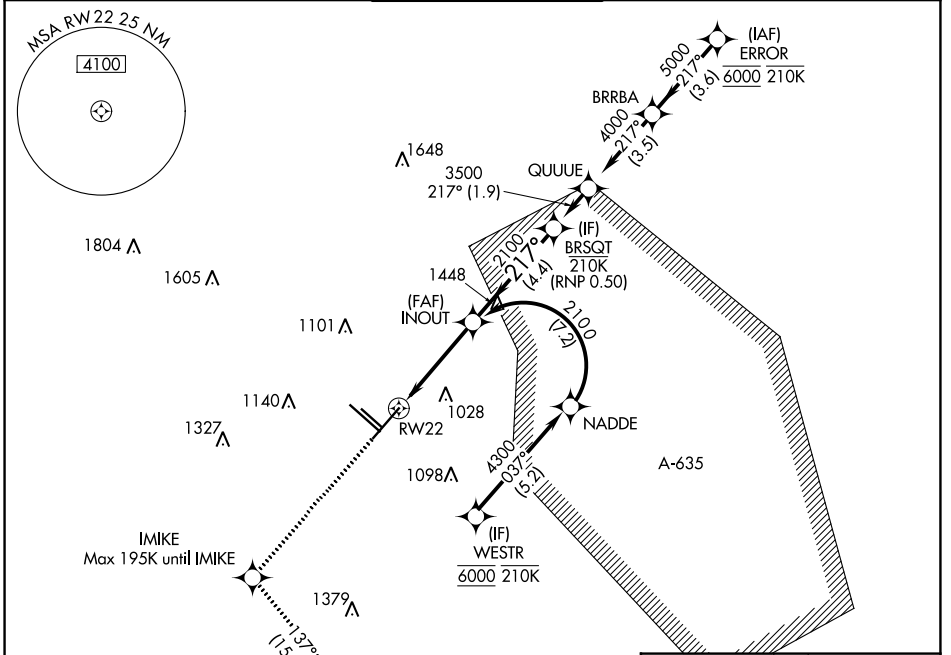
SAN ANTONIO INTL (SAT)

RNP AR APCH - GPS. Authorization required.
From BRST: Min RNP 0.50. From NADDE: RF.

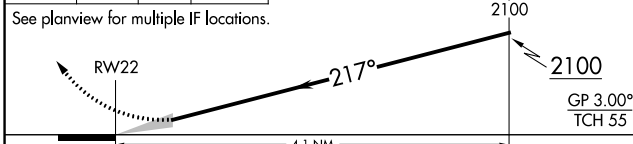
MISSED APPROACH: (Do not exceed 195K until IMIKE) Climb to 3100 direct IMIKE and on track 137° to EMBOW and hold.

▼ For uncompensated Baro-VNAV systems, procedure NA below -5°C or above 54°C.

D-ATIS	SAN ANTONIO APP CON	SAN ANTONIO TOWER	GND CON	CLNC DEL	CPDLC
118.9	125.1 307.0	119.8 257.8	121.9 348.6	126.7	



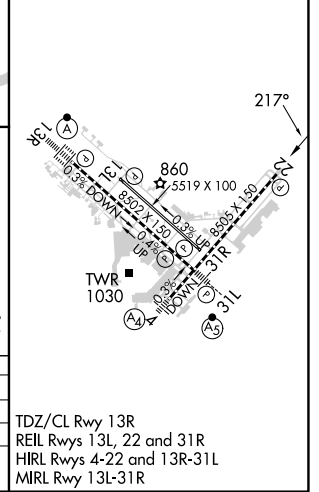
3100	IMIKE	EMBOW	VGSI and RNAV glidepath not coincident (VGSI Angle 3.00/TCH 85).
↑	✧	tr 137°	



CATEGORY	A	B	C	D
RNP 0.15 DA		1068-7/8	298 (300-7/8)	
RNP 0.30 DA		1220-13/8	450 (500-13/8)	

AUTHORIZATION REQUIRED

ELEV	809	D	TDZE	770
------	-----	---	------	-----



SC-3, 22 FEB 2024 to 21 MAR 2024

SC-3, 22 FEB 2024 to 21 MAR 2024