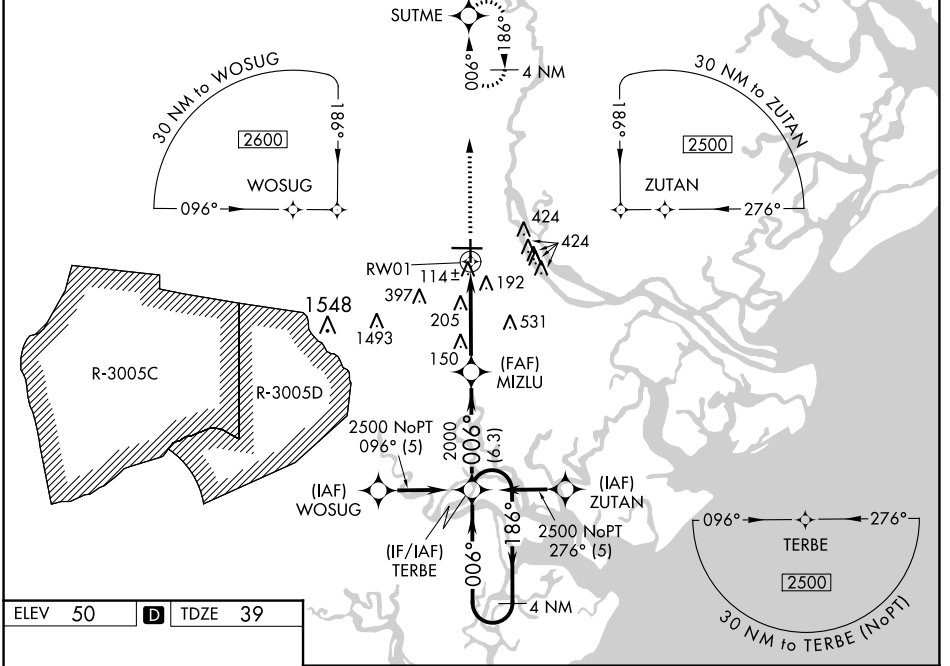


WAAS CH 45515 W01A	APP CRS 006°	Rwy Idg 7002 TDZE 39 Apt Elev 50
---------------------------------	------------------------	---

RNAV (GPS) RWY 1

SAVANNAH/HILTON HEAD INTL (SAV)

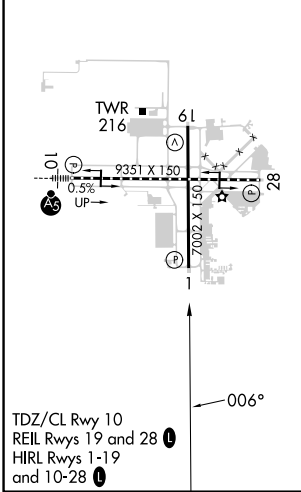
RNP APCH.		<p>▼ ▲</p> <p>For uncompensated Baro-VNAV systems, LNAV/VNAV NA below -1.5°C (5°F) or above 49°C (120°F).</p>		MISSED APPROACH: Climb to 2500 direct SUTME and hold.	
ATIS 123.75	SAVANNAH APP CON* 120.4 353.775	SAVANNAH TOWER* 125.975 (CTAF) 0 257.8	GND CON 121.9 348.6	CLNC DEL 119.55 291.775	UNICOM 122.95



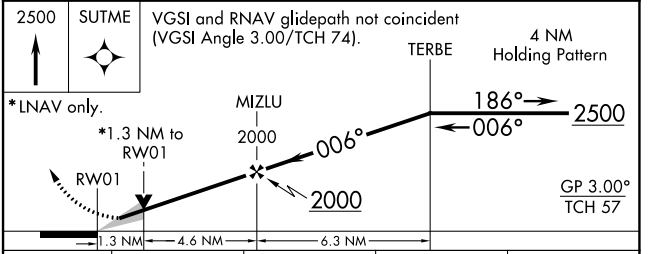
SE-4, 22 FEB 2024 to 21 MAR 2024

SE-4, 22 FEB 2024 to 21 MAR 2024

ELEV 50	D	TDZE 39
---------	----------	---------



TDZ/CL Rwy 10
REIL Rws 19 and 28
HIRL Rws 1-19
and 10-28



CATEGORY	A	B	C	D
LPV DA		239/40	200 (200-3/4)	
LNAV/VNAV DA		384/60	345 (400-1 1/4)	
LNAV MDA	520/55	481 (500-1)	520-1 3/8	481 (500-1 1/8)
C CIRCLING	520-1	470 (500-1)	740-2 690 (700-2)	740-2 1/4 690 (700-2 1/4)