

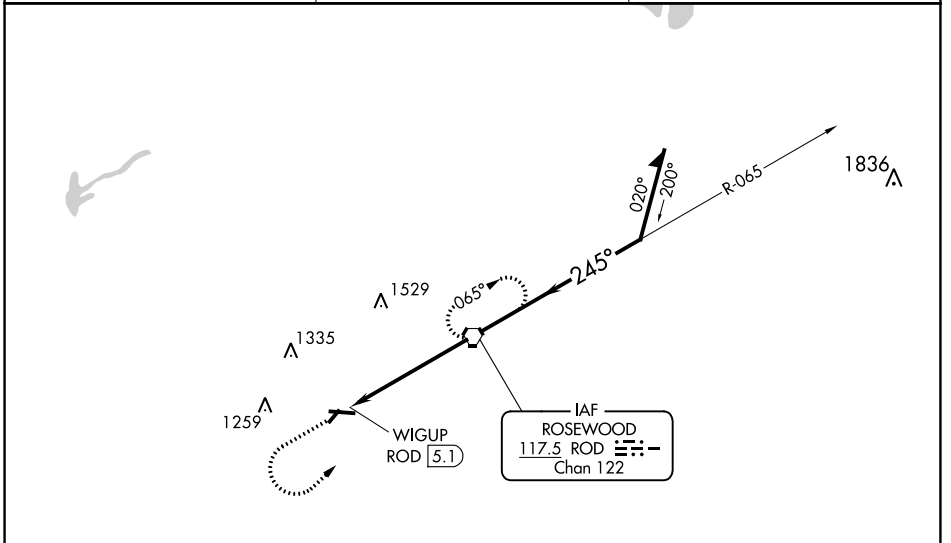
VORTAC ROD <b>117.5</b> Chan <b>122</b>	APP CRS <b>245°</b>	Rwy Idg TDZE Apt Elev	<b>N/A</b> <b>N/A</b> <b>1044</b>
---	------------------------	-----------------------------	---

**VOR-A**  
SIDNEY MUNI (SCA)

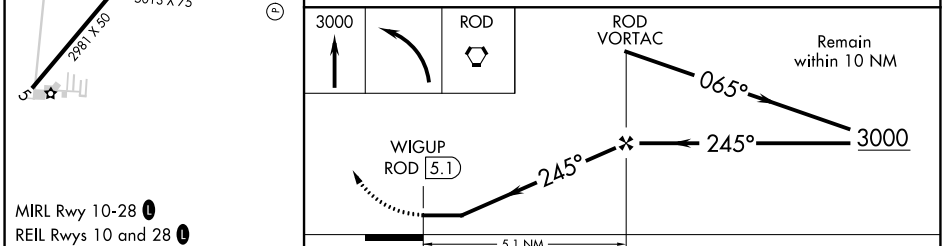
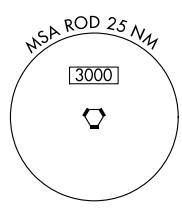
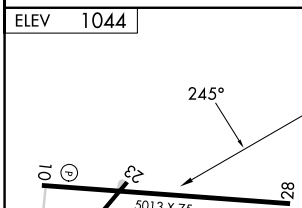
**NA** When local altimeter setting not received, use James M Cox Dayton Intl altimeter setting and increase all MDAs 60 feet and increase Cat C visibility ¼ mile. Night Landing: Rwy 28 operational VGSI required, remain on or above VGSI glidepath until threshold. Helicopter visibility reduction below 1 SM NA.

MISSED APPROACH: Climb to 3000 then left turn direct ROD VORTAC and hold.

AWOS-3 <b>120.425</b>	COLUMBUS APP CON <b>118.425 294.5</b>	UNICOM <b>123.05 (CTAF)</b>
--------------------------	--	--------------------------------



NoPT for arrivals on ROD Vortac airway radials 314 CW 088.



FAF to MAP 5.1 NM						
Knots	60	90	120	150	180	
Min:Sec	5:06	3:24	2:33	2:02	1:42	
CATEGORY	A		B		C	D
<input checked="" type="checkbox"/> CIRCLING	1540-1		496 (500-1)		1640-1½ 596 (600-1½)	1640-2 596 (600-2)

SIDNEY, OHIO  
Orig 12NOV15

40°14'N-84°09'W

SIDNEY MUNI (SCA)  
**VOR-A**

EC-2, 22 FEB 2024 to 21 MAR 2024

EC-2, 22 FEB 2024 to 21 MAR 2024