

APP CRS	Rwy Idg	<b>7669</b>
<b>212°</b>	TDZE	<b>1510</b>
	Apt Elev	<b>1510</b>

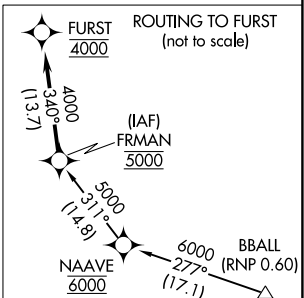
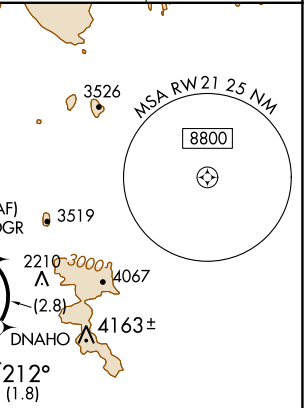
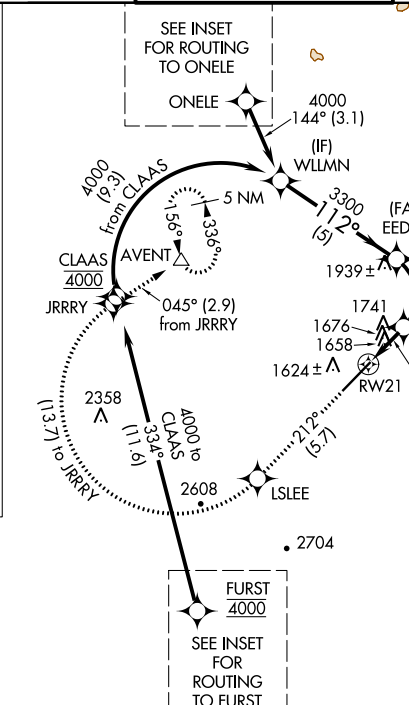
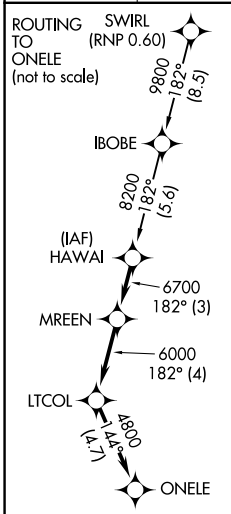
# RNAV (RNP) RWY 21

SCOTTSDALE (SDL)

**RF and GPS required. Visibility reduction by helicopters NA.**  
 For uncompensated Baro-VNAV systems, procedure NA  
 below 1°C (31°F) or above 44°C (112°F).  
 When local altimeter setting not received procedure NA.

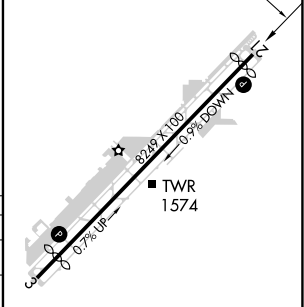
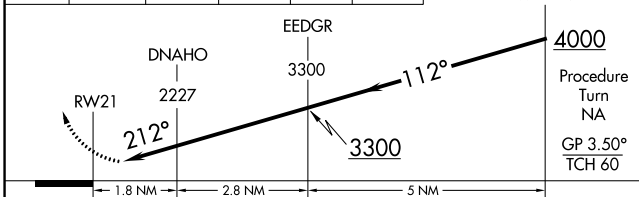
**MISSED APPROACH:** Climb to 5000 via track 212° to LSLEE, and via right turn to JRRRY, and via track 045° to AVENT and hold.

ATIS * <b>118.6</b>	PHOENIX APP CON <b>120.7 239.0</b>	SCOTTSDALE TOWER * <b>119.9 (CTAF) 0</b>	GND CON <b>121.6</b>	CLNC DEL <b>124.8</b>
------------------------	---------------------------------------	---	-------------------------	--------------------------



5000	LSLEE	JRRRY	AVENT	VGSI and RNAV glidepath not coincident (VGSI Angle 4.00/TCH 60).
tr 212°			tr 045°	

ELEV 1510	TDZE 1510
-----------	-----------



CATEGORY	A	B	C	D
RNP 0.10 DA	1948-1¼	438 (500-1¼)		NA
RNP 0.16 DA	1987-1½	477 (500-1½)		NA

**AUTHORIZATION REQUIRED**

MIRL Rwy 3-21 0  
 REIL Rws 3 and 21 0

SW-4, 22 FEB 2024 to 21 MAR 2024

SW-4, 22 FEB 2024 to 21 MAR 2024