

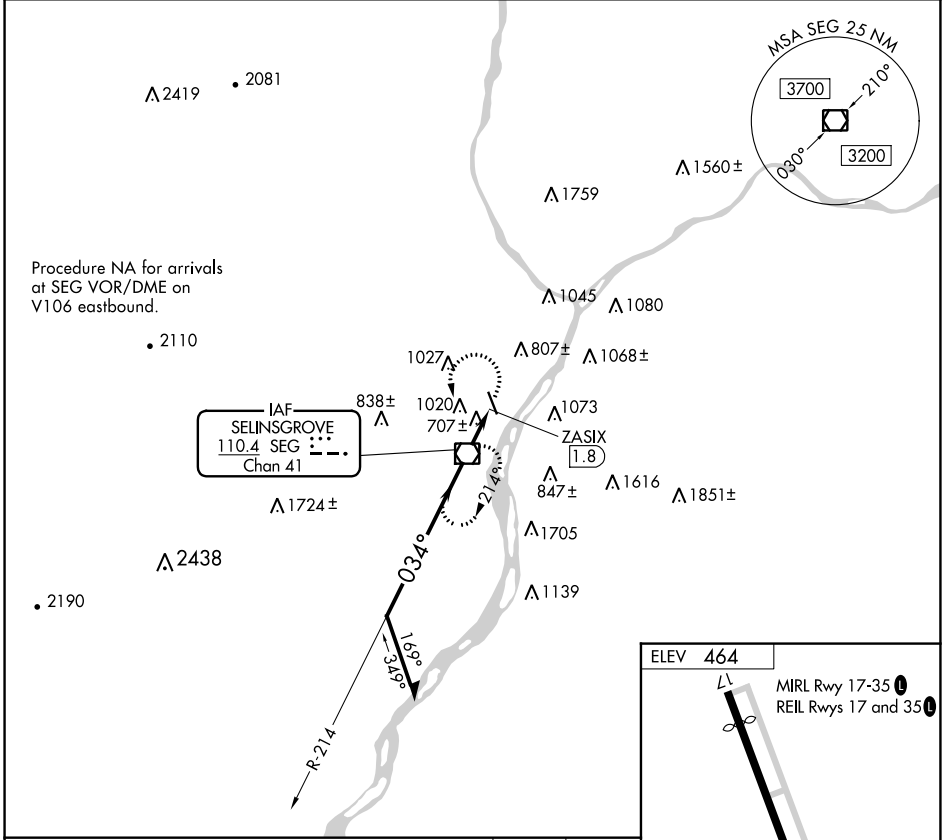
VOR/DME SEG <b>110.4</b> Chan <b>41</b>	APP CRS <b>034°</b>	Rwy Idg TDZE Apt Elev	<b>N/A</b> <b>N/A</b> <b>464</b>
---	------------------------	-----------------------------	--

# VOR-A

PENN VALLEY (SEG)

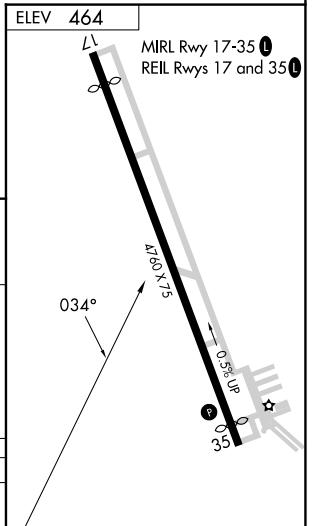
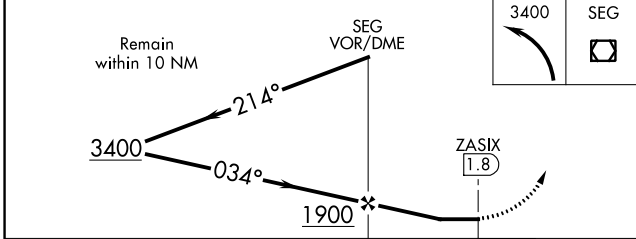
<b>⚠</b> <b>⚠</b> <b>⚠</b> -15°C	Circling to Rwy 17 NA at night. When Circling to Rwy 35 at night, operational VGSI required, remain on or above VGSI glidepath until threshold.	MISSED APPROACH: Climbing left turn to 3400 direct SEG VOR/DME and hold, continue climb-in-hold to 3400.
--	---	--

ASOS <b>123.975</b>	HARRISBURG APP CON <b>118.25 269.45</b>	UNICOM <b>122.7 (CTAF) 0</b>
------------------------	--	---------------------------------



NE-4, 22 FEB 2024 to 21 MAR 2024

NE-4, 22 FEB 2024 to 21 MAR 2024



CATEGORY	A	B	C	D
<b>C</b> CIRCLING	1400-1¼	936 (1000-1¼)	NA	

# VOR-A