

GNNRR THREE DEPARTURE (RNAV)

AL-375 (FAA)

SAN FRANCISCO INTL (SFO)
SAN FRANCISCO, CALIFORNIA

SW-2, 22 FEB 2024 to 21 MAR 2024

RNAV 1 - GPS.
GPS required.

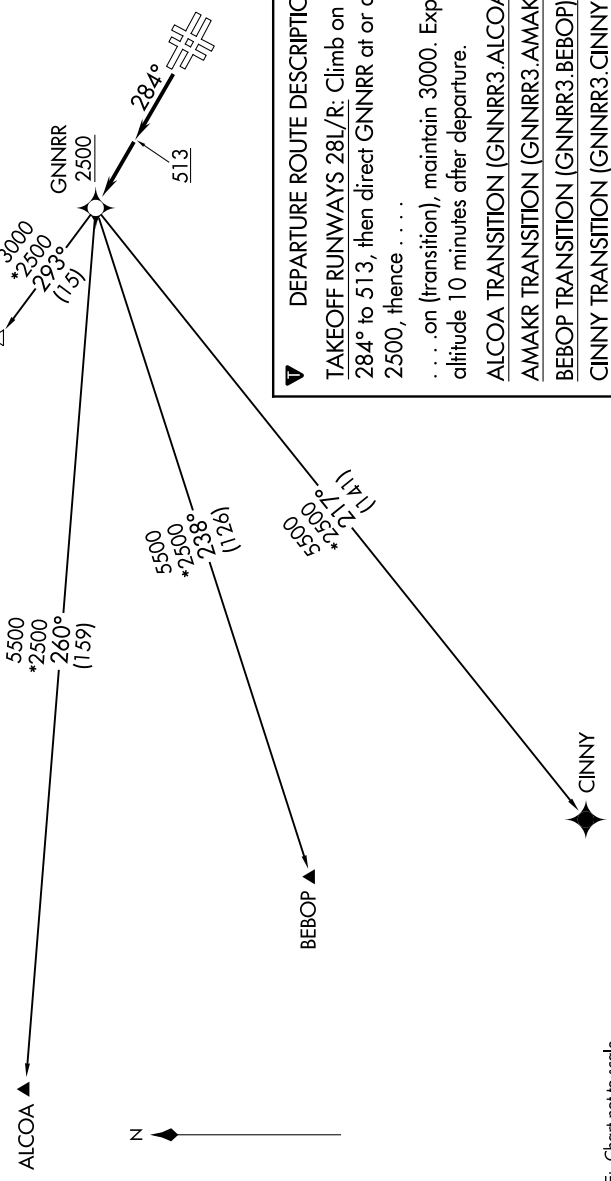
TOP ALTITUDE:
3000

TAKEOFF MINIMUMS

Rwy 28L: Standard with minimum climb of 500' per NM to 513 then 380' per NM to 1400.

Rwy 28R: Standard with minimum climb of 500' per NM to 1300.

D-ATIS
113.7 1158 118.85
CLNCDEL
118.2
CPDLC
SAN FRANCISCO TOWER
120.5 269.1
NORCAL DEP CON
135.1 307.2



DEPARTURE ROUTE DESCRIPTION

TAKEOFF RUNWAYS 28L/R: Climb on heading 284° to 513, then direct GNNRR at or above 2500, thence

. . . . on (transition), maintain 3000. Expect filed altitude 10 minutes after departure.

ALCOA TRANSITION (GNNRR3.ALCOA)
 AMAKR TRANSITION (GNNRR3.AMAKR)
 BEBOP TRANSITION (GNNRR3.BEBOP)
 CINNY TRANSITION (GNNRR3.CINNY)

NOTE: Chart not to scale.

SW-2, 22 FEB 2024 to 21 MAR 2024

GNNRR THREE DEPARTURE (RNAV)